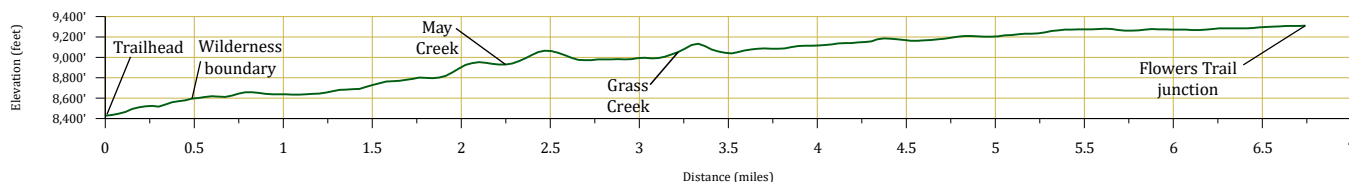


Apr. 8, 2023

Public Trail Information: Big South

| | |
|---|--|
| Trail(s): lower portion of Big South #944 | |
| Ratings / restrictions: | Hikers – Moderate Stock riders – Not Recommended Dogs must be on hand-held leash with hikers See REGULATIONS below INFORMATION OF INTEREST |
| Cautions: | Burn area; Moose; giardia |
| Typically accessible: | Year-round (see SEASONAL below) |
| Wilderness: | Comanche Peak |
| One-Way Length: | 6.9 miles |
| Beginning / Peak Elevation: | 8,457 / 9,553 |
| Gain/Loss/Net Gain: | 973 / 92 / +881 |
| Map(s) - Trails Illustrated: | #112 Poudre River Cameron Pass |
| Map(s) - USGS 7-½ ' Quadrangles: | Chambers Lake, Boston Peak |



TRAILHEAD LOCATION:

Upper Poudre River Area: Drive 48.7 miles on CO-14 from Ted’s Place to mm 74.2. The parking area and trailhead are on the left (south), just before a bridge and the Big South Campground.

Toilets are available at the Big South Campground.

The trailhead has adequate parking for a large stock trailer.

CAUTIONS: This trail was in the Cameron Peak Fire of 2020, the largest fire in Colorado history, which burned nearly 209,000 acres. This trail has moderate areas that were burned but much of the trail is still green and the trail is very fine to hike or ride.

Cautions in Burn Areas:

- Falling Trees
 - Tree root systems can be burned – compromised or non-existent. Thus, trees in burned areas fall at a high rate for some time after a fire.
 - There may be a large number of trees on the trail.
- Stump Holes—Tree stumps sometimes burn below ground level and can leave dangerous holes, often filled in loosely by ash or needles.
- Difficult to Follow Trails
 - At times the trail can be difficult or impossible to follow with no vegetation or tread visible.
 - Even in formerly familiar terrain, the landscape can be disorienting.

- Rock Slides are more likely, due to lack of vegetation and root damage.
- Flash Flooding is likely even with small rainstorms and may occur way downstream from rain.

Stock riders should note that this trail is narrow and contours along steep hillsides and many rocky sections, including a talus slope.

WATER: Abundant - The trail closely follows the river for nearly all of the trail.

CAMPING: Because the terrain is steep, there are few areas where one can camp that meet Leave No Trace guidelines and U.S. Forest Service regulations. See table and map below for camping locations along the trail.

See REGULATIONS below.

SEASONAL: Accessible in winter. The parking lot is often, but not always, plowed (it is lower priority than the Cameron Pass area parking lots). Snowshoes are usually needed; this trail is too narrow, rocky, and winding for skis. The trail tends to hold snow and drifts in the winter, so the side slope with drop-offs can be dangerous.

The unbridged crossing of Grass Creek (at 3.2 miles above the trailhead) may be impassable or unsafe in the spring during high stream flows, even if you are prepared to wade.

There are also several intermittent streams during high water flow that may cause issues.

Trails tend to be wet into mid-July or later in wet years, with lots of mosquitos. Head nets and insect repellent are recommended.

DESCRIPTION: This trail passes through a densely forested corridor along the Cache la Poudre River and is easy to follow because of its well-worn path.

This trail starts in multi-use National Forest, but after only 0.5 mile, it enters the Comanche Peak Wilderness and the Big South Travel Zone. The trail winds its way up the east side of the Cache La Poudre River for 6.9 miles, where it is intersected by the Flowers Trail coming down from the east. Although it is a gentle climb, there are some ridges to cross and many rocky sections, including a talus slope. The river is usually roaring in late spring and early summer and is most impressive. It is a favorite trail for anglers, though when water levels are high, there are few places to drop a line. In the summer, the shade and the river

provide welcome refuge from heat. The trail ends about 0.15 mile beyond the junction with Flowers Trail, where the trail once crossed to the west side of the Cache La Poudre River via a bridge that was washed away decades ago. See the description for the upper portion of this trail in the "Corral Creek and Upper Big South" description.

The accompanying map shows some details of the trail. All mileages given are approximate.

INFORMATION OF INTEREST:

This entire stretch of the Poudre is considered world-class kayaking water.

Observant hikers can see much rock work along this trail. The Civilian Conservation Corps (CCC) built this trail in the 1930's. Poudre Wilderness Volunteers repaired it in several places after the Cameron Peak Fire of 2020.

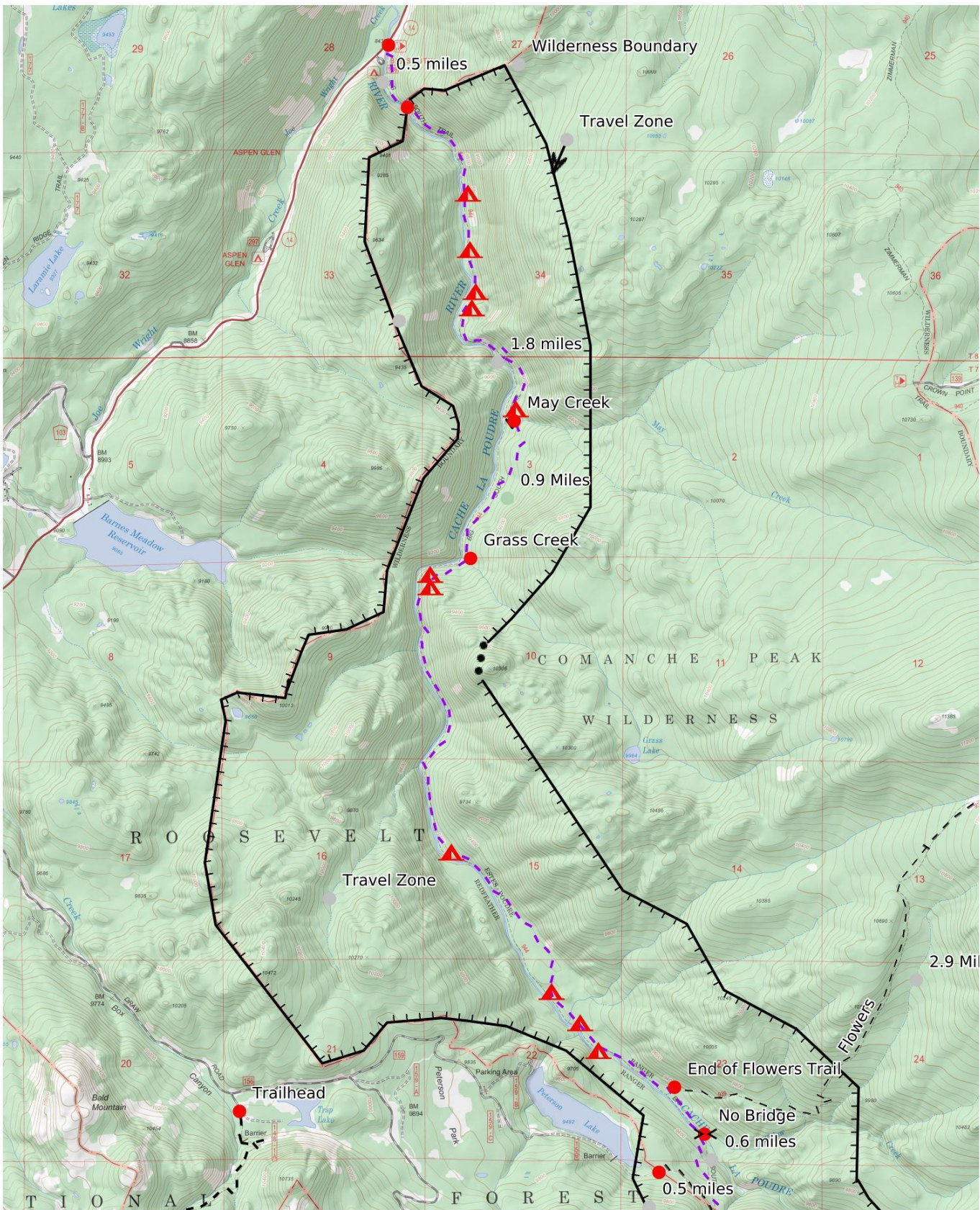
REGULATIONS:

- Camping and Fires - Prohibited within 1/4 mile of trailhead. Outside the Wilderness boundary, recommend at least 100 feet from water and trail. In the Wilderness / Travel Zone prohibited within 200 feet of water or trail, no fires, self-contained chemical stoves only.
- Dogs - Must be on hand-held leash with hikers, voice control with stock.
- Stock - To avoid spreading noxious weeds, recommend beginning 72 hours prior to the ride stock feed should only be pellets or certified weed free hay. Required: throughout the trip, any feed *must* be pellets or certified weed-free hay. Overnight stock prohibited in Travel Zone.
- Bicycles and Other Wheeled Conveyances - Prohibited.
- Motorized Transport - Prohibited.
- Motorized Equipment - Prohibited in Wilderness.
- Group Size - Outside the Wilderness boundary, more than 74 people in a single group must have a USFS permit. In the Wilderness, maximum 12 people and stock, combined.

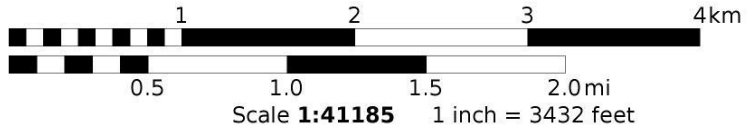
| Mileage | Location | Lat/Long* | UTM* |
|---------|---|------------------------|--|
| 0 | Trailhead (on CO-14) | N40°38.04' W105°48.38' | 13T 431 ⁸¹² E 4498 ⁴⁴¹ N |
| 0.5 | Wilderness and travel zone boundary | N40°37.77' W105°48.33' | 13T 431 ⁸⁷⁸ E 4497 ⁹⁴¹ N |
| 1.0 | Camping location on the east side of the trail up the ridge | N40°37.40' W105°47.98' | 13T 432 ³⁵⁹ E 4497 ²⁵⁰ N |
| 1.2 | Camping location on the east side of the trail up the ridge | N40°37.16' W105°47.97' | 13T 432 ³⁷¹ E 4496 ⁷⁹⁹ N |
| 1.4 | Camping location on the east side of the trail up the ridge | N40°36.97' W105°47.94' | 13T 432 ⁴¹³ E 4496 ⁴⁶² N |
| 1.5 | Camping location on the east side of the trail up the ridge | N40°36.90' W105°47.96' | 13T 432 ³⁸² E 4496 ³³² N |
| 2.2 | Camping location on the east side of the trail just before May Creek Bridge | N40°36.41' W105°47.72' | 13T 432 ⁷¹⁴ E 4495 ⁴²⁵ N |
| 2.3 | May Creek (with bridge) | N40°36.44' W105°47.72' | 13T 432 ⁷¹⁶ E 4495 ⁴⁷³ N |
| 3.2 | Grass Creek (unbridged crossing) | N40°35.83' W105°48.01' | 13T 432 ²⁹⁶ E 4494 ³⁴⁸ N |
| 3.2 | Camping location just past Grass Creek | N40°35.75' W105°48.20' | 13T 432 ⁰²⁷ E 4494 ²⁰² N |
| 3.2 | Camping location a little further past Grass Creek | N40°35.70' W105°48.20' | 13T 432 ⁰²⁸ E 4494 ¹⁰⁴ N |
| 4.9 | Camping location east side of trail | N40°34.55' W105°48.08' | 13T 432 ¹⁷⁶ E 4491 ⁹⁸¹ N |
| 5.9 | Camping location west of trail, before small stream | N40°33.95' W105°47.51' | 13T 432 ⁹⁷³ E 4490 ⁸⁵⁴ N |
| 6.2 | Camping location east side of trail | N40°33.81' W105°47.35' | 13T 433 ²⁰¹ E 4490 ⁶⁰² N |
| 6.3 | Camping location east side of trail | N40°33.69' W105°47.24' | 13T 433 ³⁴⁷ E 4490 ³⁸¹ N |
| 6.8 | Junction with Flowers Trail | N40°33.40' W105°46.72' | 13T 434 ⁰⁷⁶ E 4489 ⁸³⁶ N |
| 6.9 | End of trail at old bridge crossing (about 0.1 mile beyond junction with Flowers Trail) | N40°33.37' W105°46.72' | 13T 434 ⁰⁷⁵ E 4489 ⁷⁸¹ N |

*datum = **WGS84**

(See next page for map of trail.)



Mercator Projection
 WGS84
 UTM Zone 13T
 CALTOPO



MN 8.2°