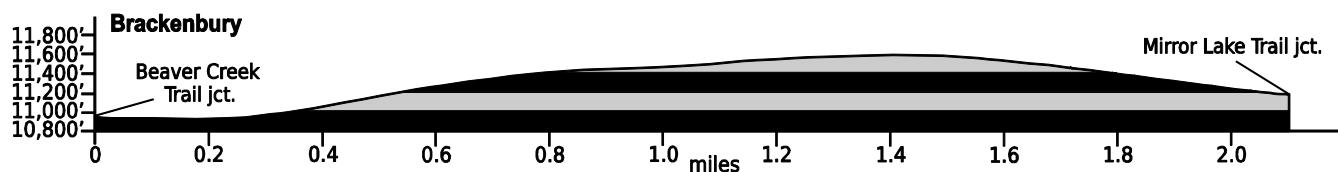


Nov. 25, 2020

## Public Trail Information: Brackenbury

Trail(s): Brackenbury #935 (#1010)	
Ratings / restrictions::	Hikers - Moderate Stock riders - Easy Dogs must be on hand-held leash with hikers See complete REGULATIONS below DESCRIPTION
Cautions:	Lightning (entire trail)
Typically accessible:	Late June, after Crown Point Road is open for summer
Wilderness:	Comanche Peak
One-Way Length:	2.1 miles (from junction with Beaver Creek Trail to junction with Mirror Lake Trail)
Beginning / Peak Elevations:	10,945 / 11,603
Gain/Loss/Net Gain:	681/444/+237
Map(s) - Trails Illustrated:	#112 Poudre River Cameron Pass
Map(s) - USGS 7-1/2' Quadrangles:	Comanche Peak



### **TRAILHEAD LOCATION:**

**Pingree Park Area:** This trail is accessed only via other trails. The closest access is via the Zimmerman Trail (South) to short segments of Flowers and Beaver Creek to Brackenbury. See those descriptions for details.

**TRAIL:** This trail, which is entirely above timberline, is marked with over 70 medium-sized rock cairns. In some places the trail tread is readily visible but in other sections you should rely on the rock cairns for an indication of the general route the trail follows. It is difficult to follow in some areas and much of it has poor footing.

**WATER: Limited** - There is water at or near each end of the trail but little or no water is available along the trail (esp. in late August and in September in most years). The trail crosses two small creeks near its northern end that are great sources of water (at GPS: N40°35.27' W105°42.92' and N40°35.42' W105°42.86'). There is also a small creek (on the

Mirror Lake Trail) near the southern end of the Brackenbury Trail that can serve as a water source most of the time.

**CAMPING:** Because this trail travels through alpine meadow (with very short willows and no trees) for nearly its entire length, the only real camping opportunities out of view from the trail are at or near the two ends of the trail - near its junction with the Beaver Creek Trail and on the Mirror Lake Trail near its junction with the Brackenbury Trail.

**SEASONAL:** Not accessible in winter, as Crown Point Road is closed.

**DESCRIPTION:** This trail begins very near the actual Brackenbury Cabin, where it branches off the upper Beaver Creek Trail. The trail ends at the Mirror Lake Trail. The Brackenbury Trail is above timberline nearly its entire length and affords panoramic views and access to lots of alpine wildflowers in the early and mid-summer.

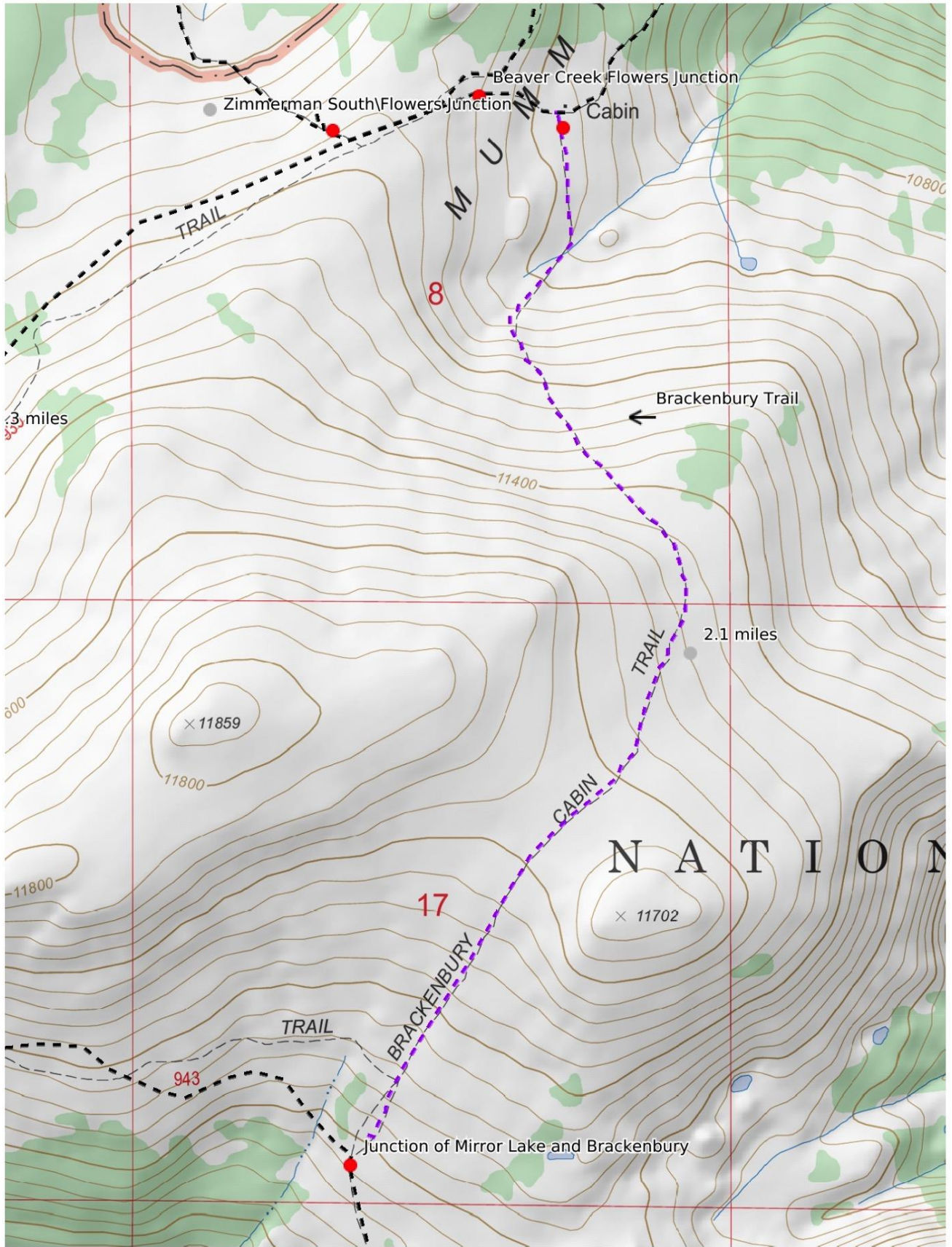
Mileages provided are approximate.

### **REGULATIONS:**

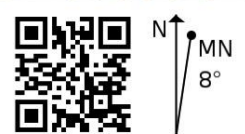
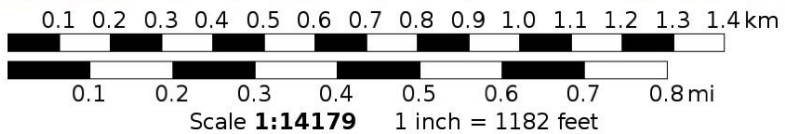
- Camping and Fires - Prohibited within 200 feet of water or trail, as this trail is entirely in Wilderness.
- Dogs - Must be on hand-held leash with hikers; voice control with stock.
- Stock - To avoid spreading noxious weeds, recommend beginning 72 hours prior to the ride, stock should be fed only pellets or certified weed-free hay. Required: throughout the trip, stock *must* be fed only pellets or certified weed-free hay.
- Bicycles and Other Wheeled Conveyances - Prohibited.
- Motorized Transport - Prohibited.
- Motorized Equipment - Prohibited.
- Group Size - Maximum 12 people and stock, combined.

<b>Mileage</b>	<b>GPS Coordinates: datum = WGS84</b>	<b>Lat/Long</b>	<b>UTM</b>
0.0	"trailhead" at junction with Beaver Creek Trail	N40°35.64' W105°42.86'	439556mE 4493933mN
2.1	end of trail at junction with Mirror Lake Trail	N40°34.12' W105°43.25'	438983mE 4491126mN

**(See next page for map of trail.)**



Mercator Projection  
 WGS84  
 USNG Zone 13TDE  
 CalTopo



Brackenbury: 3