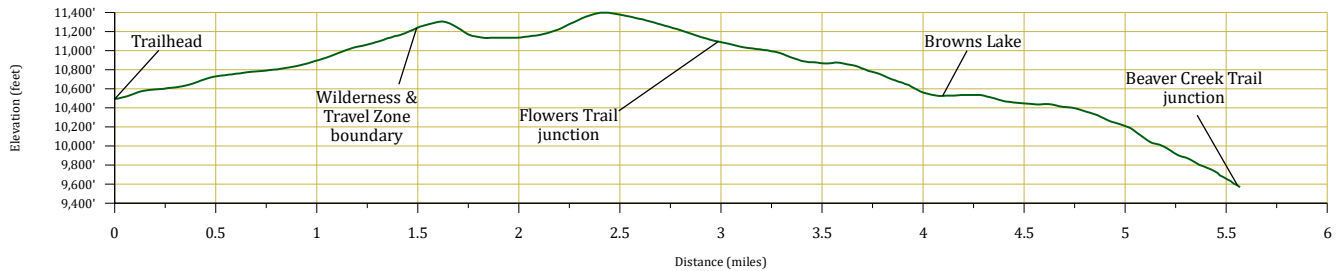


May 24, 2022

Public Trail Information: Browns Lake

Trail(s): Browns Lake #941	
Ratings / restrictions:	Hikers – Moderate Stock riders – Moderate Dogs must be on a hand-held leash with hikers See complete REGULATIONS below INFORMATION OF INTEREST
Cautions:	Burn area; Lightning in all exposed alpine areas
Typically accessible:	Summer and early fall only (Crown Point Road is not plowed in winter); see SEASONAL below
Wilderness:	Comanche Peak
One-Way Length:	5.7 miles (trailhead to Beaver Creek Trail) [4.1 miles to Browns Lake]
Beginning / Peak Elevations:	10,500 / 11,427
Gain/Loss/Net Gain:	1,055 / 1,969/-914
Map(s) - Trails Illustrated:	#112 Poudre River Cameron Pass
Map(s) - USGS 7-½ ' Quadrangles:	Comanche Peak, Kinikininik



TRAILHEAD LOCATION:

Pingree Park Area: Drive 26.5 miles from Ted’s Place to the Pingree Park Road (at mm 96.1), cross the Cache La Poudre River, and proceed 4.3 miles to Forest Road 139 (Crown Point Road). Turn right and drive 12.3 miles on the Crown Point Road (gravel) to the Browns Lake Trail parking lot on the right side of road.

No toilets or water available at the Browns Lake Trailhead. Adequate parking for stock trailers, with a pull-through.

CAUTIONS: This trail was in the Cameron Peak Fire of 2020, the largest fire in Colorado history, which burned nearly 209,000 acres. This trail has moderate areas that were burned but much of the trail is still green and the trail is very fine to hike or ride.

Cautions in Burn Areas:

- **Falling Trees**
 - Tree root systems can be burned – compromised or non-existent. Thus, trees in burned areas fall at a high rate for some time after a fire.
 - There may be a large number of trees on the trail.
- **Stump Holes**—Tree stumps sometimes burn below ground level and can leave

dangerous holes, often filled in loosely by ash or needles.

- **Difficult to Follow Trails**
 - At times the trail can be difficult or impossible to follow with no vegetation or tread visible.
 - Even in formerly familiar terrain, the landscape can be disorienting.
- **Rock Slides** are more likely, due to lack of vegetation and root damage.
- **Flash Flooding** is likely even with small rainstorms and may occur way downstream from rain.

WATER: Spotty - The trail is dry for the first (northern) 3 miles; there is a small spring/creek at the junction of Flowers and Browns Lake trails, which may be a good source of water. Water is abundant at both Browns and Timberline lakes and near the junction of the Browns Lake Trail with the Beaver Creek Trail.

CAMPING: One can find camping areas that follow Leave No Trace guidelines and U.S. Forest Service regulations in two areas. The first is near the Flowers Trail junction, either to the northwest or northeast. The second is to the southeast of Browns Lake.

If camping with stock, one can find suitable campsites that follow Leave No Trace guidelines and US Forest Service regulations along Flowers

Trail. Ride west approximately 0.75 mile on the Flowers Trail (from the Browns Lake/Flowers Trail junction). Outside the travel zone you can find some adequate forage for stock and trees for highline restraint on both the north and south sides of the Flowers Trail. Be sure to camp outside of the travel zone and far enough back so as not to be visible to other trail users. Water is non-existent here so you'll have to ride back to the spring/creek for watering stock. Alternatively, there are also camping opportunities on the Flowers Trail east of the Browns Lake Travel Zone (but no nearby water sources).

See REGULATIONS below.

SEASONAL: Crown Point Road is not plowed during winter, so the trailhead is not accessible until the snow is gone (typically late June).

DESCRIPTION: The upper, northern 4.3 miles of this trail generally follows an old jeep road through a sparse forest and then passes above tree-line – it's route is sporadically marked with rock cairns. This section can be hard to follow if there is much snow on the ground. The southern 1.4 miles (below Browns and Timberline Lakes) winds through forest where the well-worn path is very visible and easy to follow.

However, horse riders should note that the southern 1.4 mile portion of the trail is steep and may be difficult or dangerous for their horses.

From the Crown Point parking lot the trail heads uphill to a ridge just west of and below Crown

Point. At 1.5 miles from the trailhead, it enters the Comanche Peak Wilderness and the Browns Lake Travel Zone. The view from this location is panoramic: the Medicine Bow Range to the west, the Snowy Range in Wyoming to the north, and the Mummy Range to the south and southeast. As it continues, the trail will go below Crown Point and drop into a tundra valley. There is another climb over a ridge (to the trail's high point at 11,400 ft) before the trail starts its descent to Browns Lake. Shortly after reentering the timber, the Browns Lake Trail intersects the Flowers Trail (about 2.9 miles from the trailhead). The remnants of an old shepherd's cabin can be found to the west of the Browns Lake Trail, just south of the Flowers Trail. The spring near the old cabin is the first usually reliable source of water after leaving the trailhead.

From here, the trail descends into the cirque where beautiful Browns Lake is located, then crosses the stream that flows between Browns and Timberline Lakes, and skirts the west side of Timberline Lake, before heading downhill toward the Beaver Creek Trail. Much of this part of the trail passes through a recovering burn area that is quite scenic. This portion of the trail offers great views of Comanche Peak and Comanche Reservoir.

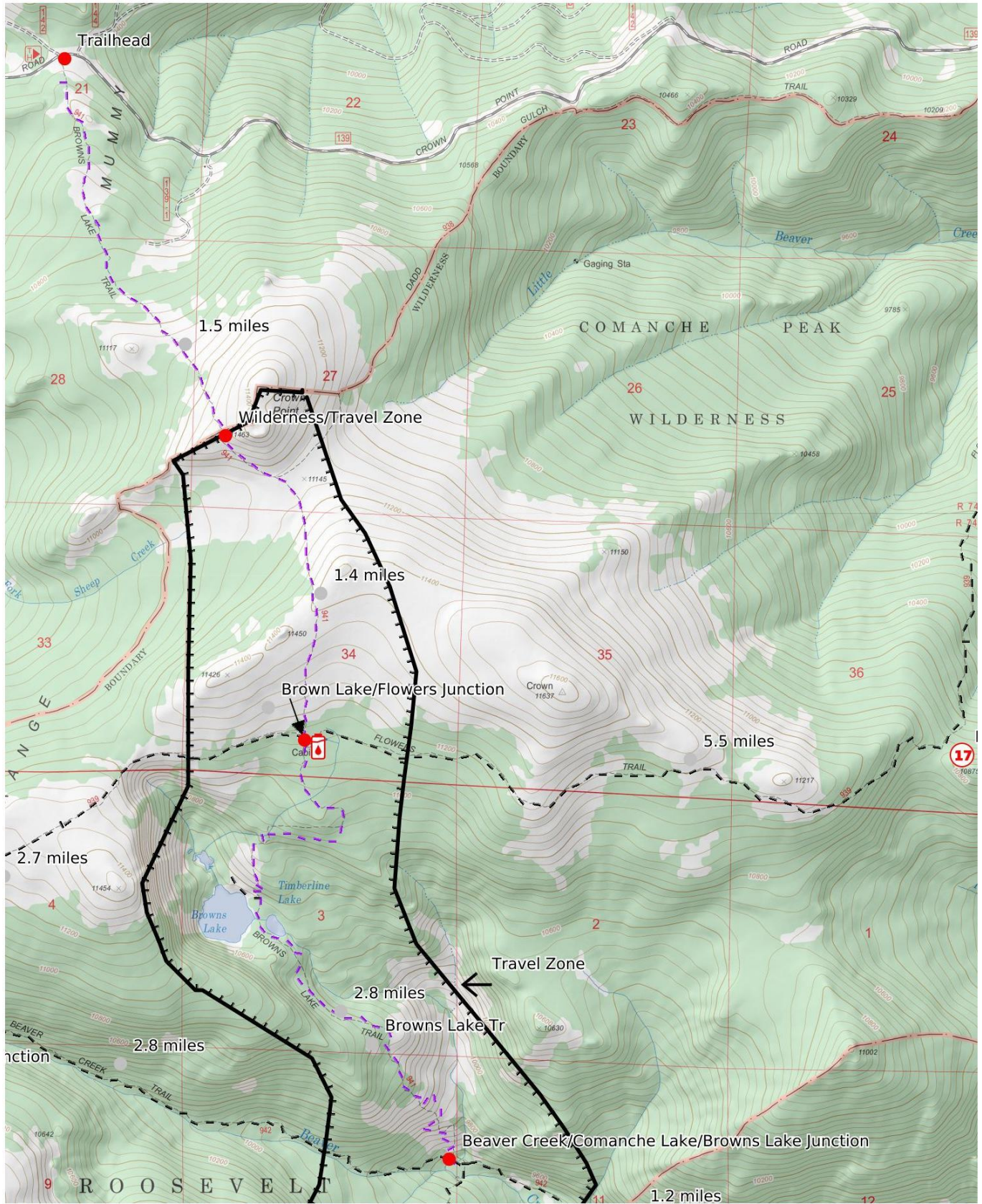
Much of this part of the trail passes through a recovering burn area that is quite scenic. This portion of the trail offers great views of Comanche Peak and Comanche Reservoir.

REGULATIONS:

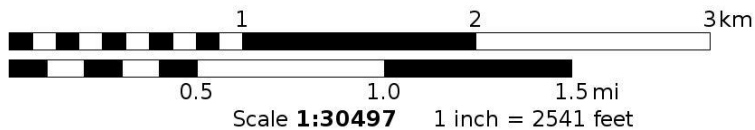
- Camping and Fires - Prohibited within 200 feet of trailhead and parking area. Outside the Wilderness boundary: recommend at least 100 feet from water and trail. In the Travel Zone/Wilderness: prohibited within 200 feet of trail or water; no wood fires; self-contained chemical stoves only.
- Dogs - Must be on hand-held leash with hikers; voice control with stock.
- Stock - To avoid spreading noxious weeds, recommend beginning 72 hours prior to the ride, stock should be fed only pellets or certified weed-free hay. Required: throughout the trip, stock *must* be fed only pellets or certified weed-free hay. Overnight stock prohibited in Travel Zone.
- Bicycles and Other Wheeled Conveyances - Prohibited.
- Motorized Transport - Prohibited.
- Motorized Equipment - Prohibited in Wilderness.
- Group Size - Outside the Wilderness boundary, a single group of more than 74 people must have a USFS permit. In the Wilderness, maximum 12 people and stock, combined.

Mileage	GPS Coordinates: datum = WGS84	Lat/Long	UTM	
0	trailhead on Crown Point Road	N40°38.97' W105°41.91'	440944mE	4500083mN
1.5	Wilderness and travel zone boundary	N40°37.76' W105°41.23'	441885mE	4497837mN
2.9	junction with Flowers Trail	N40°36.78' W105°40.88'	442378mE	4496020mN
4.3	Brown's Lake	N40°36.20' W105°41.06'	442105mE	4496940mN
5.7	end of trail at jct. with Beaver Creek Trail	N40°35.42' W105°40.23'	443262mE	4493497mN

(See next page for map of trail.)



Mercator Projection
 WGS84
 UTM Zone 13T

Browns Lake: 4