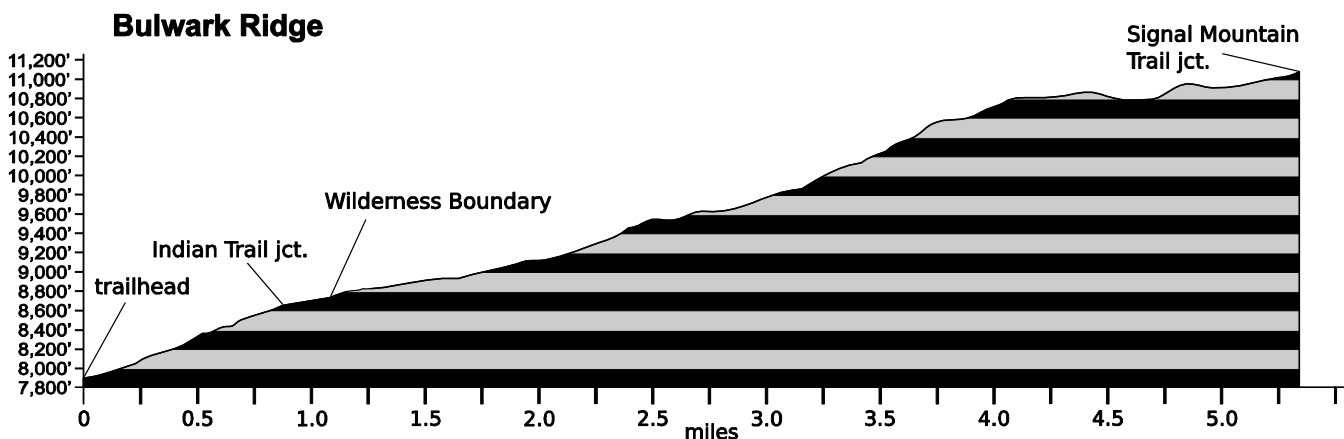


Mar. 5, 2022

## Public Trail Information: Bulwark Ridge

Trail(s): Bulwark Ridge #928-1	
Ratings / restrictions:	Hikers – Difficult      Stock riders – Difficult See complete REGULATIONS below DESCRIPTION
Cautions:	Burn area; Lightning (especially in the alpine zone near South Signal Mountain)
Typically accessible:	Year-round (see SEASONAL below)
Wilderness:	Comanche Peak
One-Way Length:	5.3 miles (from Bulwark Ridge Trailhead [0.33 mile west of Dunraven Trailhead] to 3-way junction with Signal Mountain & South Signal Mountain trails)
Beginning / Peak Elevations:	7,894 / 11,056
Gain/Loss/Net Gain:	3,251/89/+3,162
Map(s) - Trails Illustrated:	#101 Cache La Poudre Big Thompson; #112 Poudre River Cameron Pass (& #200 RMNP)
Map(s) - USGS 7-½' Quadrangles:	Glen Haven, Crystal Mountain, Pingree Park



### **TRAILHEAD LOCATION:**

**Big Thompson & Estes Park Area:** From the Dam Store at the mouth of the Big Thompson Canyon, drive nine miles up US-34 to Drake. Turn right on CR-43 (Devils Gulch Rd) and follow it for 6.1 miles to Dunraven Glade (CR-51B), a gravel road that heads to the northwest. Follow this road for 2.5 miles to the large parking lot at the Dunraven Trailhead. To access the Bulwark Ridge Trailhead, park in the lot and hike/ride through or around the gate at the southwest end of the parking lot on the gravel road for about 0.3 mile. You will see the Bulwark Ridge trailhead on the north (right) side of the road at the top of this hill.

Toilets are available at the Dunraven Trailhead parking lot. This large parking area provides space for several stock trailers, but the trailhead tends to be busy, so an early arrival is recommended. There is a small parking area up the road by Bulwark Ridge Trailhead, but no turn-around for trailers.

**CAUTIONS:** This trail was in the Cameron Peak Fire of 2020, the largest fire in Colorado history, which burned nearly 209,000 acres. This trail was severely burned, much of the trail is black, there is risk of

falling trees, and it may be very difficult to follow the trail in some sections.

### Cautions in Burn Areas:

- Falling Trees
  - Tree root systems can be burned – compromised or non-existent. Thus, trees in burned areas fall at a high rate for some time after a fire.
  - There may be a large number of trees on the trail.
- Stump Holes -- Tree stumps sometimes burn below ground level and can leave dangerous holes, often filled in loosely by ash or needles.
- Difficult to Follow Trails
  - At times the trail can be difficult or impossible to follow with no vegetation or tread visible.
  - Even in formerly familiar terrain, the landscape can be disorienting.
- Rock slides are more likely, due to lack of vegetation and root damage.
- Flash Flooding is likely even with small rainstorms and may occur way downstream from rain.

**WATER: Unavailable** - The trail is dry with virtually no available water sources along its length.

**CAMPING:** There are few good camping sites along this trail. See REGULATIONS below.

**SEASONAL:** Normally accessible in winter, as the road to the trailhead is usually plowed. Snowshoes usually needed; not recommended for skis.

**DESCRIPTION:** This trail is the southern approach to South Signal Mountain and Signal Mountain. Some sections are considerably eroded with lots of loose rocks. The middle third of the trail is steep and very eroded with lots of loose rocks. The upper 1.5 miles of the trail is relatively flat, marked with rock cairns, and easy to follow. The actual Bulwark Ridge trailhead is 0.33 mile up the Cheley Camp road beyond the Dunraven parking lot. From the trailhead the trail passes through private property (for about 0.25 mile) as it climbs steeply up a badly eroded trail to the north for about 0.9 mile. Don't go off trail or camp on this non-USFS land. At that point, it

intersects the Indian/Miller Fork Trail that heads steeply downhill to the northeast. From this intersection, the trail turns back to the northwest and climbs through a predominantly lodgepole pine forest along Bulwark Ridge. The trail enters the Wilderness about 1.1 miles from the trailhead. For about the next 3.6 miles, the trail zig-zags along the Comanche Peak Wilderness boundary toward South Signal Mountain.

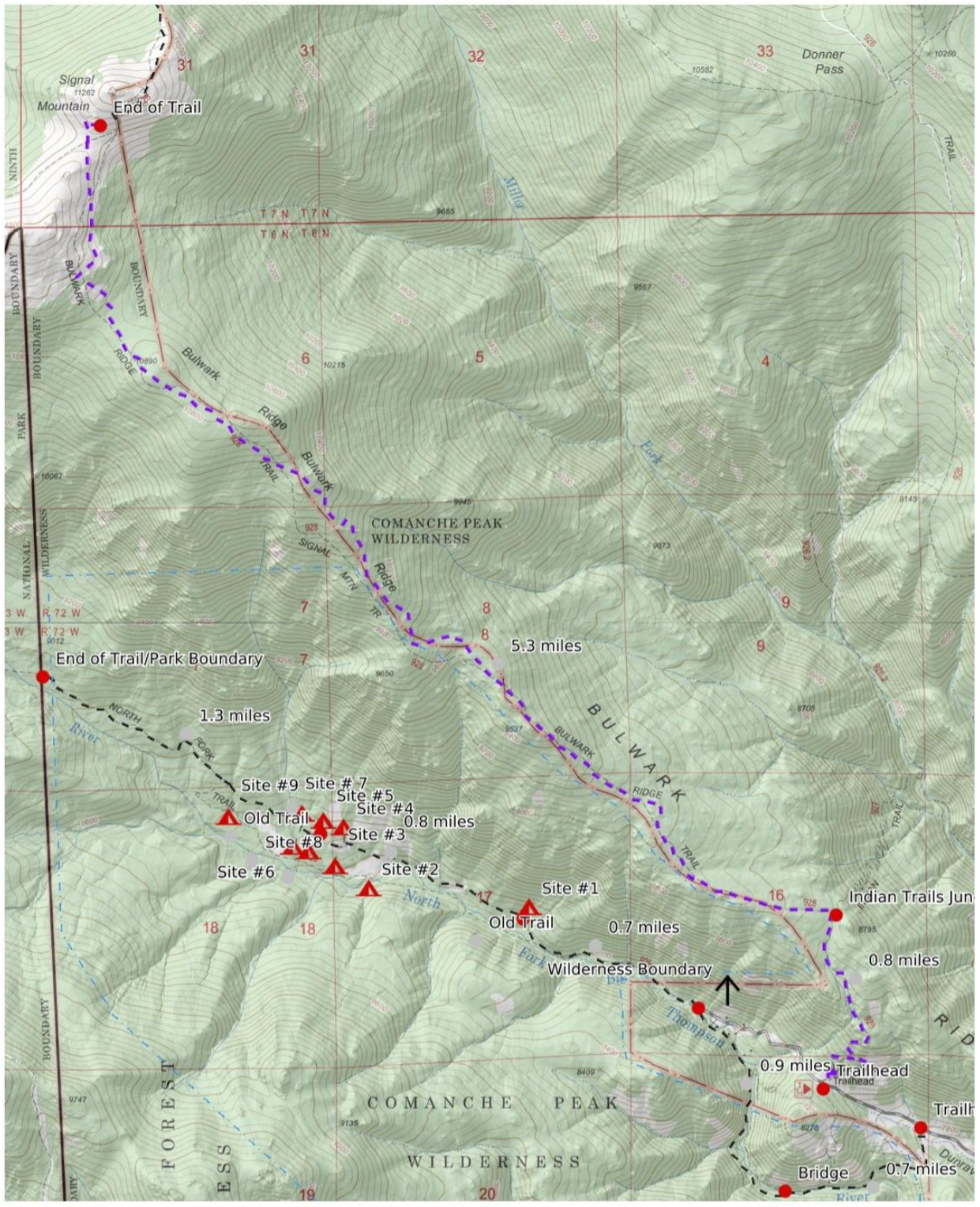
Because this trail is on a southerly facing slope, it can be quite dry and hot during the summer months. No water is available, so carry plenty. The Bulwark Ridge Trail ends in the saddle between Signal Mountain and South Signal Mountain, just slightly SW of the Signal Mountain summit. At this point the Bulwark Ridge Trail meets the Signal Mountain Trail coming down from the north and the South Signal Mountain Trail coming down from the west. This trail junction is not sign-posted. If you want, you can climb cross-country to the summit of either peak. The views from this location are spectacular in all directions.

**REGULATIONS:**

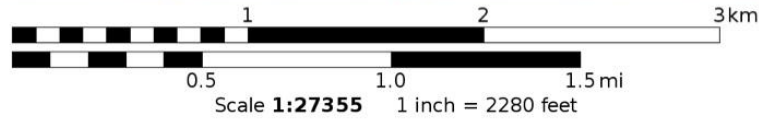
- Camping and Fires - Prohibited within 200 feet of trailhead, toilets and parking area. Outside the Wilderness boundary, recommend at least 100 feet from water and trail. In the Wilderness, prohibited within 200 feet of water or trail.
- Dogs - Must be on hand-held leash with hikers; voice control with stock.
- Stock - To avoid spreading noxious weeds, recommend beginning 72 hours prior to the ride, stock should be fed only pellets or certified weed-free hay. Required: throughout the trip, stock *must* be fed only pellets or certified weed-free hay.
- Bicycles and Other Wheeled Conveyances - Prohibited.
- Motorized Transport - Prohibited.
- Motorized Equipment - Prohibited in Wilderness.
- Group Size – Outside the Wilderness boundary, a single group of more than 74 people must have a USFS permit. In the Wilderness, maximum 12 people and stock, combined.
- NOTE: Wilderness regulations apply past the entrance into the Wilderness at about 1.4 miles

Mileage	GPS Coordinates: datum = WGS84	Lat/Long	UTM
0.0	trailhead (on private road to Cheley Camp)	N40°28.67' W105°27.99'	460458mE 4480898mN
0.9	junction with Indian Trail	N40°29.16' W105°27.95'	460519mE 4481804mN
1.1	Wilderness boundary	N40°29.18' W105°28.18'	460195mE 4481843mN
4.7	South Signal Mtn. approach	N40°30.99' W105°30.79'	456527mE 4485212mN
5.3	end of trail at 3-way junction with Signal Mountain & South Signal Mountain trails	N40°31.40' W105°30.78'	456546mE 4485971mN

**(See next page for trail map.)**



Mercator Projection  
 WGS84  
 USNG Zone 13TDE  
 CALTOPO



Bulwark Ridge: 3