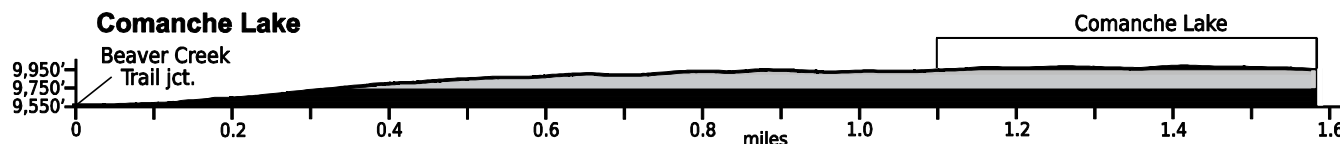


May. 19, 2022

Public Trail Information: Comanche Lake

| | |
|---------------------------------|--|
| Trail(s): Comanche Lake #990 | |
| Ratings / restrictions: | Hikers – Moderate Dogs must be on hand-held leash with hikers Stock riders – Not recommended No overnight stock See complete REGULATIONS below DESCRIPTION |
| Cautions: | Burn area |
| Typically accessible: | Mid- to late June, after the road to Sky Ranch / Beaver Creek trailhead is cleared of snow |
| Wilderness: | Comanche Peak |
| One-Way Length: | 1.1 miles to the lake |
| Beginning / Peak Elevation: | 9,569 / 9,949 |
| Gain/Loss/Net Gain: | 422/42/+380 |
| Map(s) - Trails Illustrated: | #112 Poudre River Cameron Pass |
| Map(s) - USGS 7-½' Quadrangles: | Comanche Peak |



TRAIL LOCATION:

Pingree Park Area: The Comanche Lake Trail is accessed from the Beaver Creek Trail. See the Beaver Creek Trail description for details.

CAUTIONS: This trail was in the Cameron Peak Fire of 2020, the largest fire in Colorado history, which burned nearly 209,000 acres. The condition of the trail is unknown.

Cautions in Burn Areas:

- Falling Trees
 - Tree root systems can be burned – compromised or non-existent. Thus, trees in burned areas fall at a high rate for some time after a fire.
 - There may be a large number of trees on the trail.
- Stump Holes—Tree stumps sometimes burn below ground level and can leave dangerous holes, often filled in loosely by ash or needles.
- Difficult to Follow Trails
 - At times the trail can be difficult or impossible to follow with no vegetation or tread visible.
 - Even in formerly familiar terrain, the landscape can be disorienting.
- Rock slides are more likely, due to lack of vegetation and root damage.
- Flash Flooding is likely even with small rainstorms and may occur way downstream from rain.

WATER: **Abundant** - Water is readily available at both ends and at a couple of intermediate locations along this short trail.

CAMPING: Note that the entire Comanche Lake Trail is within the Browns Lake/Comanche Lake Travel Zones. There are few camping locations that meet Leave No Trace guidelines nor U.S. Forest Service regulations along the Comanche Lake Trail. Stock are prohibited from remaining in the Travel Zone overnight. One could go up Browns Lake Trail and find an appropriate spot at least 200 feet from the various water sources and trails or go up Beaver Creek Trail on the south side of Beaver Creek.

See REGULATIONS below.

SEASONAL: The stringer bridge over Beaver Creek (0.06 mile south of the junction with the Beaver Creek Trail) is under water in the springtime. Even if you are prepared to wade, this crossing may be impossible or unsafe during high stream flows. Additionally, there are two unbridged stream crossings (at 0.9 and 1.0 miles from the junction with the Beaver Creek Trail) that can be difficult or unsafe during high stream flows, even if you are prepared to wade. Comanche Lake Trail is not recommended for winter use; access would require skiing or snowshoeing more than 4 miles just to reach the trailhead.

DESCRIPTION: The Comanche Lake “trailhead” (junction with the Beaver Creek Trail) is approximately 4.4 miles up the Beaver Creek Trail from trailhead-#1, about 150 ft below the junction of the Browns Lake Trail with the Beaver Creek Trail. The trail passes through forest where well-worn

paths are easy to see and follow. The trail is not recommended for stock because of potential impacts to the lake and surrounding area, and because it is very rough and rocky.

The Comanche Lake Trail leads slightly downhill to the southwest to a crossing of Beaver Creek. The trail then climbs about 380 ft through a dense subalpine

fir and Engelmann spruce forest for about 1 mile before reaching the beautiful sub-alpine lake. The trail is little-used and very lush. Comanche Lake is a destination for visitors seeking solitude or trout fishing.

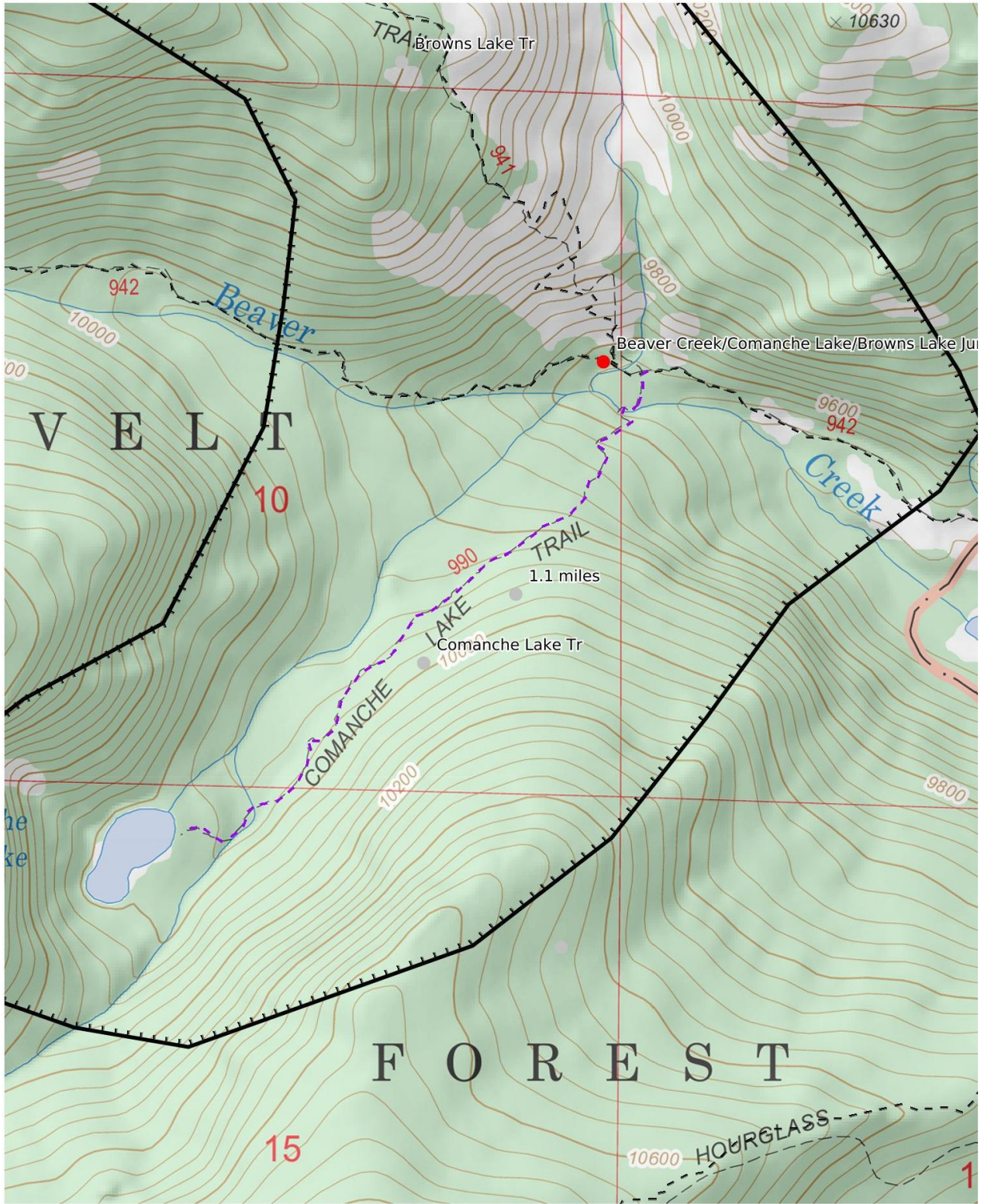
Mileages provided are approximate.

REGULATIONS:

- Camping and Fires - In this Travel Zone: prohibited within 200 feet of trail or water; no fires; self-contained chemical stoves only.
- Dogs - Must be on hand-held leash with hikers; voice control with stock.
- Stock - To avoid spreading noxious weeds, recommend beginning 72 hours prior to the ride, stock should be fed only pellets or certified weed-free hay. Required: throughout the trip, stock *must* be fed only pellets or certified weed-free hay. Overnight stock prohibited.
- Bicycles and Other Wheeled Conveyances - Prohibited.
- Motorized Transport & Equipment - Prohibited.
- Group Size - Maximum 12 people and stock, combined.

| Mileage | GPS Coordinates: datum = WGS84 | Lat/Long | UTM |
|---------|--|------------------------|--|
| 0.0 | "trailhead" at junction of Beaver Creek and Comanche Lake trails | N40°35.41' W105°40.19' | 443 ³¹⁸ mE 4493 ⁴⁷⁸ mN |
| 1.1 | Comanche Lake | N40°34.85' W105°40.93' | 442 ²⁶⁶ mE 4492 ⁴⁵⁰ mN |

(See next page for map of trail.)



Mercator Projection
 WGS84
 UTM Zone 13T




Comanche Lake: 3