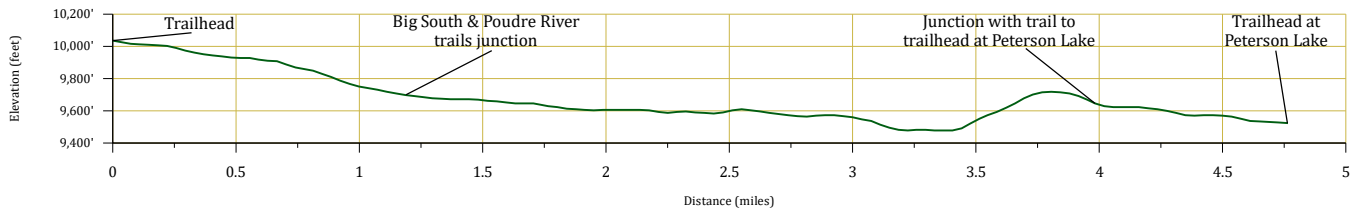


May 24, 2022

Public Trail Information: Corral Creek & Upper Big South

Trail(s): Corral Creek #989; upper portion of Big South #944	
Ratings / restrictions:	Hikers – Easy Stock riders – Moderate (poor footing, rocky) See complete regulations below DESCRIPTION.
Cautions:	Burn area, Moose
Typically accessible:	Late June, after Long Draw Road is open for the season
Wilderness:	Comanche Peak
One-Way Length:	5.2 miles (from Corral Creek trailhead to Peterson Lake SE trailhead) + 0.6 mile from northern junction to the river
Beginning / Peak Elevations:	10,056 / 10,056
Gain/Loss/Net Gain:	533/1,101/-568
Map(s) - Trails Illustrated:	#112 Poudre River, Cameron Pass (& #200 RMNP)
Map(s) - USGS 7-½' Quadrangles:	Chambers Lake, Comanche Peak



TRAILHEAD LOCATION:

Upper Poudre River Area: Drive 53.7 miles on CO-14 from Ted’s Place to mm 69.5 and turn left onto Long Draw Road (FDR-156), which is just northeast of the Blue Lake Trail parking lot. There are 2 trailheads at opposite ends of this trail.

To access the Corral Creek trailhead, stay on Long Draw Road for 8.8 miles from CO-14, until you get to the RMNP Corral Creek ranger cabin, just before crossing Corral Creek. The trailhead is directly across the road from the cabin. Toilets are located at the Long Draw Campground, another 0.3 mile up the road.

To access the Peterson Lake trailhead, drive about 3.6 miles on Long Draw Road, turn left onto Peterson Lake Road, and follow it to Peterson Lake. The last 0.3 mile of the road to the Peterson Lake trailhead requires a high-clearance vehicle, but you can park on the side of the road before the "4 Wheel Drive Only" sign and walk up the road to the trailhead.

No parking for stock trailers at the Corral Creek Trailhead or at the Peterson Lake Trailhead.

CAUTIONS: This trail was in the Cameron Peak Fire of 2020, the largest fire in Colorado history, which burned nearly 209,000 acres. It was severely burned, much or all of the trail is black, there is risk of falling trees, and it may be very difficult to follow the trail in some sections.

Cautions in Burn Areas:

- Falling Trees

- Tree root systems can be burned – compromised or non-existent. Thus, trees in burned areas fall at a high rate for some time after a fire.
- There may be a large number of trees on the trail.
- Stump Holes—Tree stumps sometimes burn below ground level and can leave dangerous holes, often filled in loosely by ash or needles.
- Difficult to Follow Trails
 - At times the trail can be difficult or impossible to follow with no vegetation or tread visible.
 - Even in formerly familiar terrain, the landscape can be disorienting.
- Rock slides are more likely, due to lack of vegetation and root damage.
- Flash Flooding is likely even with small rainstorms and may occur way downstream from rain.

WATER: Abundant - The trail is close to Corral Creek or the Poudre River for most of its length.

CAMPING: There are areas for camping that meet Leave No Trace guidelines and U.S. Forest Service regulations to the north of Corral Creek Trail. With the heavy burn along the Upper Big South Trail, there are no known good options.

See REGULATIONS below.

SEASONAL: Not accessible in winter because Long Draw Road is not plowed.

DESCRIPTION: These two trails (Upper Big South and Corral Creek) have well-worn, easy to follow

paths except in some of the heavily burned areas, with sizable rock cairns that indicate the general route where the Big South Trail passes through an open, grassy meadow and the tread is indistinct.

About 0.3 mile from the Corral Creek trailhead the trail enters the Comanche Peak Wilderness and the Big South Travel Zone. Wilderness and Travel Zone regulations apply to both the Corral Creek and Upper Big South trails beyond this point. Continue along the Corral Creek Trail for another 1.0 mile to the junction with the Upper Big South Trail coming up the Poudre River from the north and the Poudre River Trail coming down the Poudre River from the south. At this point, you may want to check out the short section of trail to the south (right), which leads to a footbridge at the RMNP boundary. [This is the start of the Poudre River Trail in Rocky Mountain National Park.]

From the junction of Corral Creek and the Upper Big South Trails, the upper segment of the Big South Trail follows the Poudre River for 3.3 miles to a trail junction that leads to Peterson Lake. This trail will give you some great views of the Poudre River and the fishing can be excellent. Moose are commonly seen along this trail. This area was heavily burned in the Cameron Peak Fire of 2020.

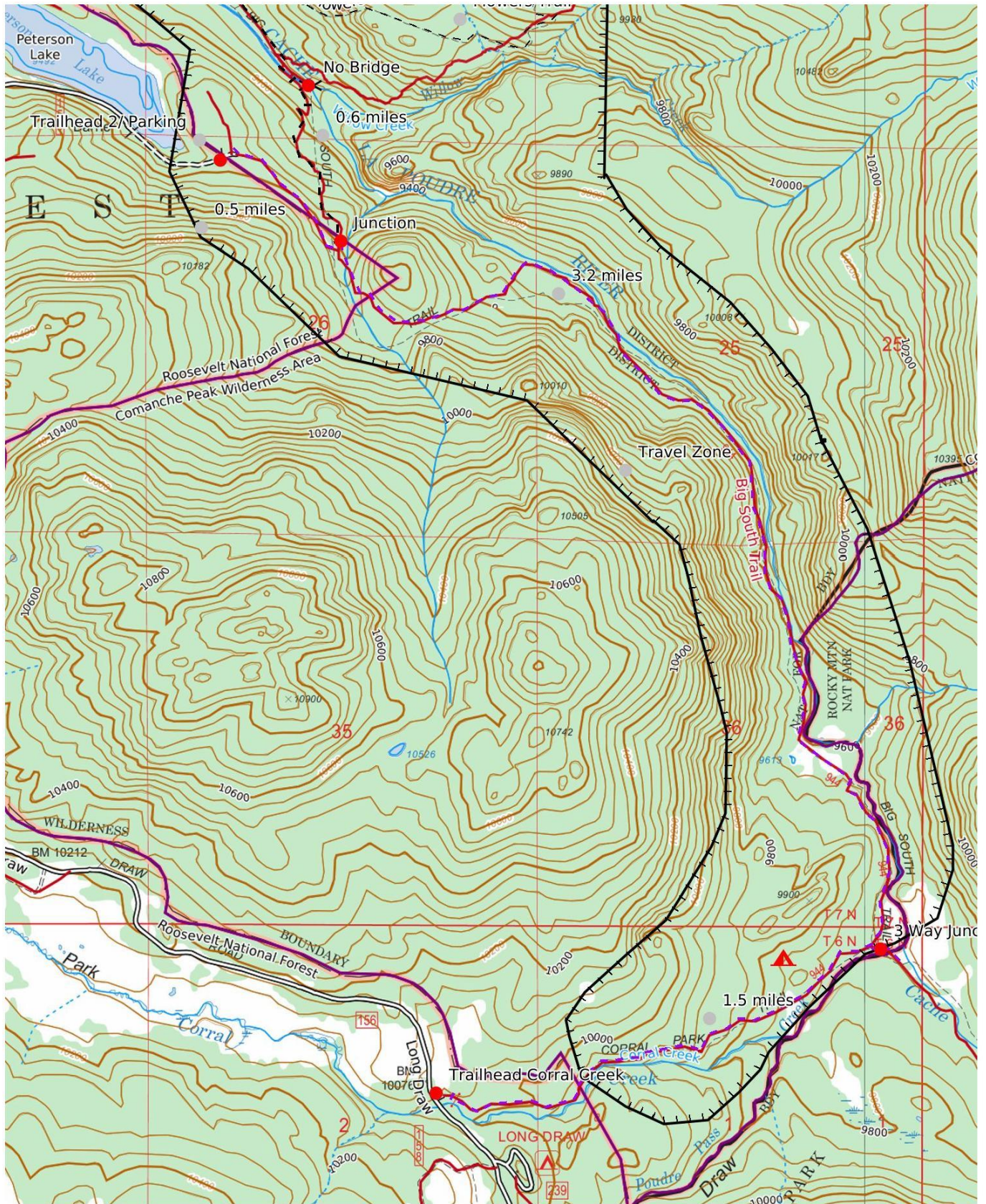
At the junction near Peterson Lake, go left to the end of the trail at the southeast end of Peterson Lake. This last 0.4 mile of the trail heading up toward Peterson Lake climbs about 300 feet. There is a trailhead sign here, at the end of the high-clearance, four-wheel-drive road to Peterson Lake. Then, the lake parking is another 0.3 mile. Camping is not allowed at the trailhead. Alternately, go right at the junction for 0.6 more miles to the end of Upper Big South, at the Poudre River.

REGULATIONS:

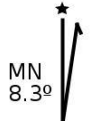
- Camping and Fires - Prohibited within 1/4 mile of both trailheads. In the Travel Zone/Wilderness: prohibited within 200 feet of trail or water; no wood fires; self-contained chemical stoves only.
- Dogs - Must be on hand-held leash with hikers, voice control with stock.
- Stock - To avoid spreading noxious weeds, recommend beginning 72 hours prior to the ride stock feed should only be pellets or certified weed free hay. Required: throughout the trip, any feed *must* be pellets or certified weed-free hay. Overnight stock prohibited in Travel Zone.
- Bicycles and Other Wheeled Conveyances - Prohibited.
- Motorized Transport - Prohibited.
- Motorized Equipment - Prohibited in Wilderness.
- Group Size - Outside the Wilderness boundary, more than 74 people in a single group must have a USFS permit. In the Wilderness, maximum 12 people and stock, combined.

Mileage	GPS Coordinates: datum = WGS84	Lat/Long	UTM
0.0	Corral Creek Trailhead (trailhead-1) (Long Draw Road; FDR-156)	N40°31.08' W105°46.26'	434687mE 4485538mN
0.4	Wilderness boundary	N40°31.10' W105°45.84'	435280mE 4485570mN
0.5	upper TZ boundary	N40°31.15' W105°45.72'	435450mE 4485661mN
1.5	3-way junction of Corral Creek, Big South, & Poudre River trails	N40°31.41' W105°44.99'	436485mE 4486133mN
4.7	jct. with northern trail to Peterson Lake	N40°32.95' W105°46.54'	434322mE 4489001mN
5.2	trailhead-2 (SE of Peterson Lake; FDR-159)	N40°33.18' W105°46.86'	433874mE 4489430mN

(See next page for map of trail.)



Mercator Projection
 WGS84
 UTM Zone 13T
 CALTOPO



Corral Creek & Upper Big South: 3