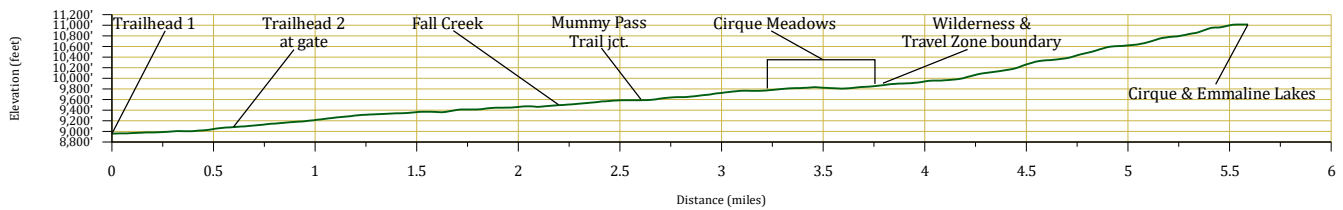


May 24, 2022

Public Trail Information: Emmaline Lake

Trail(s): Emmaline Lake #945 (#854)	
Ratings / restrictions:	Hikers - Moderate Stock riders - Easy (stock prohibited in Wilderness) Dogs on hand-held leash only See complete REGULATIONS below INFORMATION OF INTEREST
Cautions:	Burn area; lightning in exposed alpine areas near Emmaline, Cirque, and upper Cirque Lakes; Moose
Typically accessible:	Year-round (see SEASONAL below for details)
Wilderness:	Comanche Peak
One-Way Length:	5.7 miles (trailhead to Emmaline Lake)
Elevations - Beginning / Peak:	8,931 / 10,982
Gain/Loss/Net Gain:	2,053/2/+2,051
Map(s) - Trails Illustrated:	#112 Poudre River Cameron Pass
Map(s) - USGS 7-½' Quadrangles:	Pingree Park, Comanche Peak



TRAILHEAD LOCATION:

Pingree Park Area: Drive 26.5 miles on CO-14 from Ted’s Place to Pingree Park Road (at mm 96.1). Cross the Cache La Poudre River and drive 15.9 miles up the Pingree Park Road. Take the turnoff to the Tom Bennett Campground, located just below the CSU Mountain Campus. Continue to the trailhead, 0.3 mile from this junction.

There are several options for parking: just off the road soon after the campground entrance; about 0.1 mile past the entrance, in a small parking area; or in one of the pullouts just beyond the trailhead. Alternatively, with a high clearance vehicle, you can drive the rough but passable old road for 0.5 mile to a locked gate near the CSU Mountain Campus.

Stock riders: There may be room for a small stock trailer at the campground (0.1 mi from trailhead). There is also an ample pull-off up W CR145 about 150 yds past the trailhead.

Toilets and water for stock are available at Tom Bennett Campground seasonally.

CAUTIONS: This trail was in the Cameron Peak Fire of 2020, the largest fire in Colorado history, which burned nearly 209,000 acres. It has minor areas that are burned but most of the trail is still green and the trail is in good shape.

Cautions in Burn Areas:

- Falling Trees

- Tree root systems can be burned – compromised or non-existent. Thus, trees in burned areas fall at a high rate for some time after a fire.
- There may be a large number of trees on the trail.
- Stump Holes—Tree stumps sometimes burn below ground level and can leave dangerous holes, often filled in loosely by ash or needles.
- Difficult to Follow Trails
 - At times the trail can be difficult or impossible to follow with no vegetation or tread visible.
 - Even in formerly familiar terrain, the landscape can be disorienting.
- Rock Slides are more likely, due to lack of vegetation and root damage.
- Flash Flooding is likely even with small rainstorms and may occur way downstream from rain.

WATER: Abundant - Trail is dry for the first 2 miles, then water is available at crossings of Fall Creek located at 2.1, 3.3, 4.5, 4.8, 5.0, and 5.4 miles from the trailhead, and at Emmaline, Cirque, and Upper Cirque Lakes.

CAMPING: One can find suitable campsites that follow Leave No Trace guidelines and U.S. Forest Service regulations in the Cirque Meadows area, 3.5 miles from the trailhead. Stay alert, since there is a large population of moose in the area.

SEASONAL: Snowshoes or skis are usually needed in winter and spring; however, skis would not be useful for the higher portion of the trail. The upper portion is usually snow-packed until late June. The road (FR 145) to Tom Bennett Campground is closed and gated in winter. Park near, but not in front of, the gate. Be sure you can get out if the snowplow comes by. Snowshoe or ski 0.3 mi to the Emmaline Lake TH.

DESCRIPTION:

From the trailhead, the trail skirts the west side of the CSU Mountain Campus on a former jeep trail for 3.5 miles to Cirque Meadows – a popular destination for visitors. The lower portion of this trail is an old roadbed for most of its first 3.75 miles. The trail passes through CSU property for the first 2.1 miles. The junction with Mummy Pass Trail occurs at mile 2.3, on the south (left) side of the trail. It is easy to miss in this heavily burned area.

As you travel through Cirque Meadows, enjoy the beautiful view and the flowers in season. After the trail crosses Fall Creek the second time and passes the Cirque Meadows area, the trail comes to the Comanche Peak Wilderness boundary. Stock are prohibited beyond this point. The area from the Wilderness boundary to beyond Emmaline and

Cirque Lakes has been designated a Travel Zone. As in all travel zones, wood fires are prohibited, and only self-contained chemical stoves may be used.

The trail continues to climb uphill, leaving thick forest and passing through more open and stunted forest and patchy, open areas where it becomes somewhat braided and difficult to see and follow. Eventually, the trail reaches Cirque Lake and then continues to the north along the eastern shore of Emmaline Lake. The upper 0.5 mile (from just below Cirque Lake) consists of a confusing web of many paths, making it challenging to find the most direct/best route in this area. Look for small rock cairns. Some rock scrambling is required to traverse the last 0.5 mile.

INFORMATION OF INTEREST: Heavy burn from the 2020 Cameron Peak Fire is seen from about 2 to 2.8 miles. In 1994, a forest fire started by lightning destroyed a considerable area of pine forest and much of the campus. The impacts of this fire remain visible along the first mile or so of this trail. Notice the dense regrowth of small lodgepole pine and quaking aspen trees and the abundance of wildflowers that now flourish in the old burn area. Previously, an earlier fire in 1890 engulfed the area around the park and destroyed most of the forest at that time.

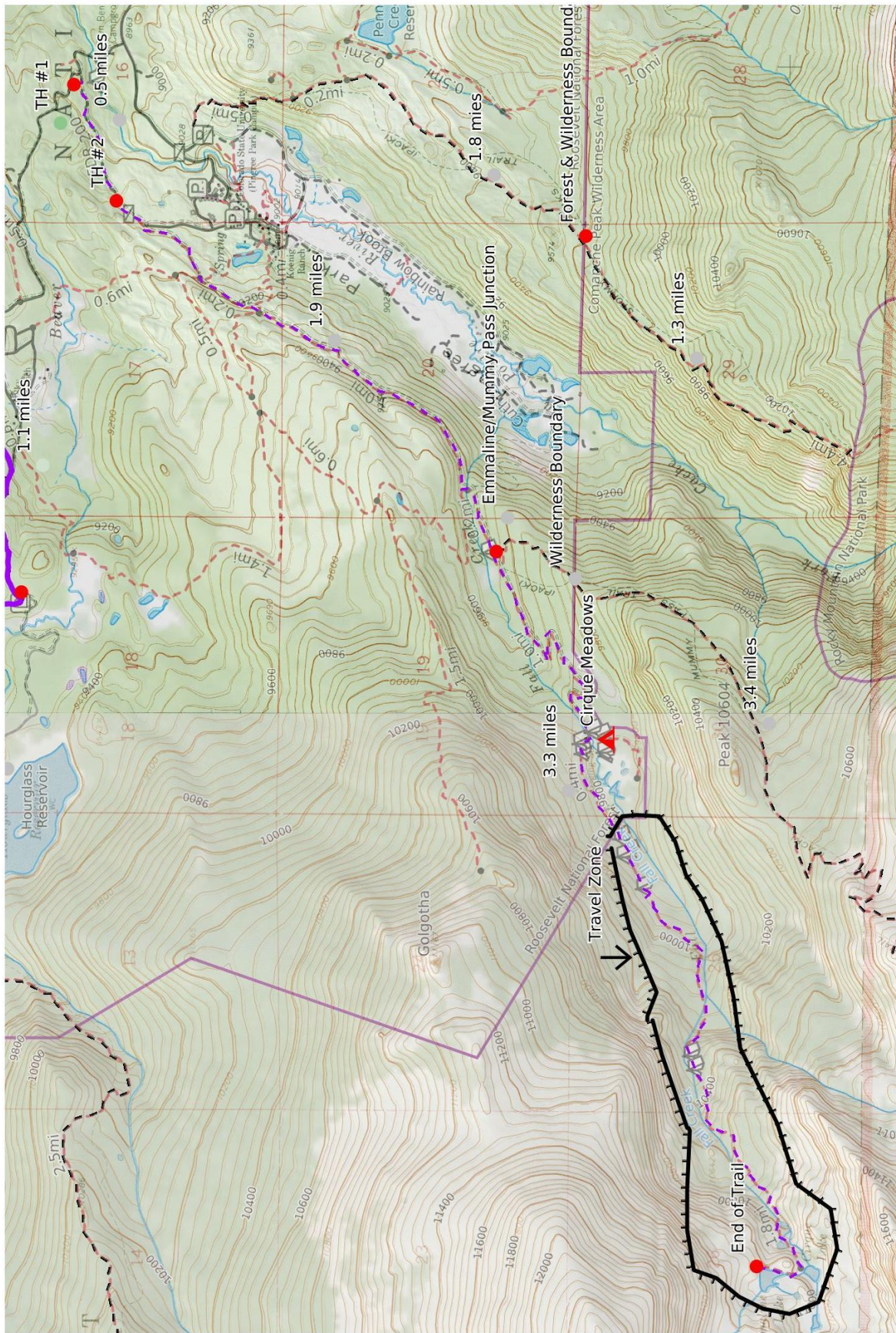
REGULATIONS:

- Camping and Fires - Prohibited within 200 feet of trailhead and parking area. Outside the Wilderness boundary: no camping on CSU property; after 2.1 miles (the first crossing of Fall Creek), recommended 100 or more feet from trail and water. In the Travel Zone/Wilderness: prohibited within 200 feet of trail or water; no wood fires; self-contained chemical stoves only.
- Dogs - Must be on hand-held leash with hikers; voice control with stock.
- Stock - To avoid spreading noxious weeds, recommend beginning 72 hours prior to the ride, stock should be fed only pellets or certified weed-free hay. Required: throughout the trip, stock *must* be fed only pellets or certified weed-free hay. Stock prohibited above the Wilderness boundary.
- Bicycles and Other Wheeled Conveyances - Prohibited.
- Motorized Transport - Prohibited.
- Motorized Equipment - Prohibited in Wilderness.
- Group Size - Outside the Wilderness boundary, a single group of more than 74 people must have a USFS permit. In the Wilderness/Travel Zone, maximum 12 people.

Mileage	GPS Coordinates: datum = WGS84	Lat/Long	UTM	
0	trailhead-1 (just past Tom Bennett CG; on FDR-	N40°34.57' W105°35.18'	450 ^{373m} E	4491 ^{874m} N
0.6	trailhead-2 (at locked gate near the CSU Mountain	N40°34.44' W105°35.60'	449 ^{779m} E	4491 ^{637m} N
2.2	First crossing of Fall Creek	N40°33.45' W105°36.67'	448 ^{261m} E	4489 ^{820m} N
2.3	Junction with Mummy Pass Trail	N40° 33.33' W105°36.78'	448 ^{105m} E	4489 ^{593m} N
3.5	Cirque Meadows			
3.5	Wilderness boundary	N40°33.01' W105°37.98'	446 ^{403m} E	4489 ^{015m} N

5.7	Cirque Lake	N40°32.46' W105°39.67'	444 ⁰¹⁰ mE	4488 ⁰¹⁵ mN
5.7	Emmaline Lake	N40°32.53' W105°39.69'	443 ⁹⁸³ mE	4488 ¹⁴⁵ mN
5.7	Upper Cirque Lake	N40°32.41' W105°39.90'	443 ⁶⁸⁵ mE	4487 ⁹²⁵ mN

(See next page for map of trail.)



Mercator Projection
 WGS84
 UTM Zone 13T



Emmaline Lake: 4