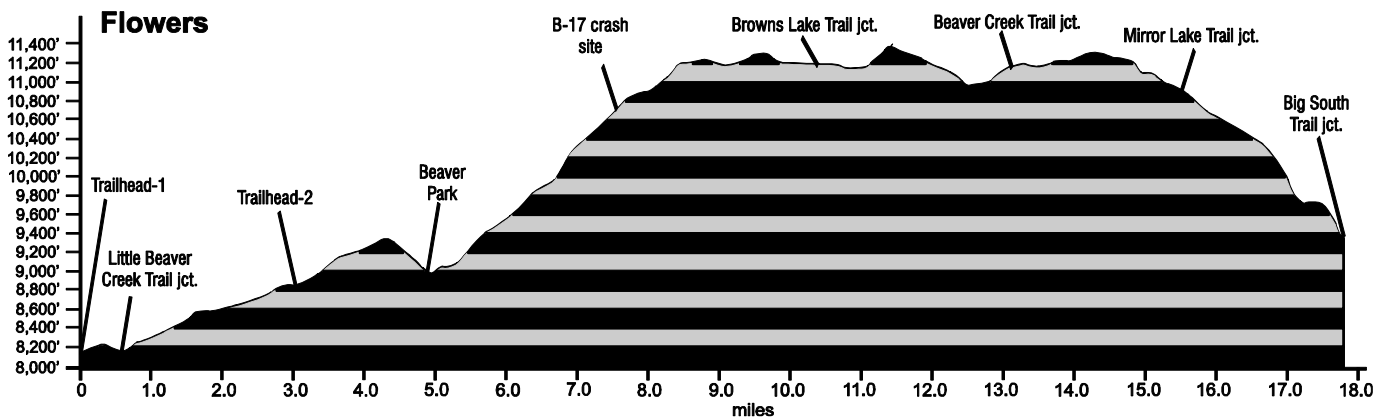


May, 19, 2022

Public Trail Information: Flowers

| | |
|---------------------------------|--|
| Trail(s): Flowers #939 | |
| Ratings / restrictions: | Hikers – Moderate Stock riders – Easy to Challenging Travel Zone: Dogs on hand-held leash only See complete REGULATIONS below INFORMATION OF INTEREST |
| Cautions: | Burn area, Lightning in exposed alpine areas; Stringer bridge over Little Beaver Creek above Beaver Park is failing / may be unsafe |
| Typically accessible: | Year-round; see SEASONAL below |
| Wilderness: | Comanche Peak |
| One-Way Length: | 17.9 miles from trailhead #1 at Jacks Gulch campground to junction with Big South Trail (14.8 miles from trailhead #2, at the end of the 4-wheel drive road) |
| Beginning / Peak Elevations: | 8,184 / 11,365 |
| Gain/Loss/Net Gain: | 4,080/ 2916/+1,164 |
| Map(s) - Trails Illustrated: | #112 Poudre River Cameron Pass |
| Map(s) - USGS 7-½' Quadrangles: | Rustic, Kinikini, Comanche Peak, Chambers Lake |



TRAILHEAD LOCATION:

Pingree Park Area: Drive 26.5 miles on CO-14 from Ted’s Place to the Pingree Park Road (at mm 96.1), cross the Cache La Poudre River, and drive 6.3 miles to the Jacks Gulch Campground. Turn right (west) into the Campground on Forest Road 152 and drive to the west corner of the Campground (trailhead-1). If the gate is open you can drive with a high clearance vehicle (or possibly a medium clearance vehicle) 3.1 miles on Old Flowers Road to trailhead-2, which is located at the Comanche Peak Wilderness boundary and the monument to the B-17 crash.

Parking for both hikers and stock riders are available at trailhead-1 and elsewhere in the Campground (which is closed since the Cameron Peak Fire) and at trailhead-2. There is limited parking for stock trailers at the two trailheads.

CAUTIONS: This trail was in the Cameron Peak Fire of 2020, the largest fire in Colorado history, which burned nearly 209,000 acres. It was severely burned, much or all of the trail is black, there is risk of falling trees, and it may be very difficult to follow the trail in some sections.

Cautions in Burn Areas:

- Falling Trees
 - Tree root systems can be burned – compromised or non-existent. Thus, trees in burned areas fall at a high rate for some time after a fire.
 - There may be a large number of trees on the trail.
- Stump Holes—Tree stumps sometimes burn below ground level and can leave dangerous holes, often filled in loosely by ash or needles.
- Difficult to Follow Trails
 - At times the trail can be difficult or impossible to follow with no vegetation or tread visible.
 - Even in formerly familiar terrain, the landscape can be disorienting.
- Rock slides are more likely, due to lack of vegetation and root damage.
- Flash Flooding is likely even with small rainstorms and may occur way downstream from rain.

WATER: extremely limited - Year-round water can be obtained from Little Beaver Creek at the crossing just above Beaver Park, at about 5 miles from

trailhead-1. A spring/small creek also is usually reliable, except in dry years or late in the season, at the junction with Browns Lake trail at 10.5 miles from trailhead-1. A small pond is also generally reliable near the junction of Beaver Creek Trail and Brackenbury Trail, 0.3 mile east of the junction of Flowers and Beaver Creek Trails. Generally water is available at the small snow-melt stream that becomes the headwaters of May Creek, which is near the summit of Flowers trail, about half-way between the Zimmerman and Mirror Lake trail junctions, around 14.5 miles from trailhead-1. Water is abundant at the end of the trail, with a stream crossing the trail at 17.2 miles from trailhead-1 and the Poudre River at the very end of the trail, after arriving at the Big South Trail junction.

CAMPING: One can find camping locations which follow Leave No Trace guidelines and U.S. Forest Service regulations several places along the trail. a) Along the eastern edge of Beaver Park, set back from the trail and stream, at about 5 miles from trailhead-1. b) Either northeast or northwest of the junction with Browns Lake Trail at 10.5 miles from trailhead-1. Note, however, that stock may not camp in a Travel Zone. Other campsites can be found just outside the travel zone either to the east or west, which can be used for stock. c) Going east on the Beaver Creek Trail about 0.3 mile, on the north side of Beaver Creek Trail in the trees, northeast of Brackenbury Cabin. d) Sites without water can be found between Browns Lake Trail junction and Mirror Lake Trail junction in one of the tree islands a bit off the trail, at approximately 10.5 to 15.5 miles from trailhead-1. e) There are numerous possible campsites along the last 2.5 miles as the trail descends toward Big South. There are potential campsites in the flat area just north of the trail and just outside of the Big South Travel Zone for about 1.5 miles at approximately GPS N40°33.40' W105°46.12'. f) There is a possible but unverified campsite near GPS N40°34.29' W105°45.40' (with a small intermittent stream to the east that may be a possible water source). Otherwise, g) hikers could camp in the upper part of the Big South Travel Zone.

See REGULATIONS below

SEASONAL: Usually accessible in the winter. Jacks Gulch Campground is closed and gated in the winter, so park near – but not in front of – the gate off Pingree Park Road. Be sure you can get out if the snowplow comes by. Walk or ski through the campground, about 0.6 mile to the locked gate above the campground where the 4-wheel drive Flowers

Road begins. Snowshoes or skis are often needed, especially if you go far.

DESCRIPTION:

The first 3.1 miles of the trail from trailhead-1 (on Old Flowers Road) is a gently sloped road that passes through a series of large meadows and then sparse forest. As you head west on this segment, you will frequently encounter mountain bikers, hikers, dogs, and vehicles until you reach the Comanche Peak Wilderness boundary (trailhead-2). Dispersed camping is allowed along the road.

At trailhead-2, the trail encounters the Comanche Peak Wilderness boundary, where there is a monument to the B-17 crash victims, and continues through a formerly dense forest of small lodgepole pine as it first climbs and then descends toward the Little Beaver Creek drainage and Beaver Park. From trailhead-2 to Beaver Park (5.0 miles from trailhead-1), severe burn exists from the Cameron Peak Fire and the trail may be difficult to follow.

Note that the old 2-log stringer bridge over Little Beaver Creek (at the north end of Beaver Park) is falling apart, making crossings difficult and possibly unsafe or wet during high stream flows. After crossing Little Beaver Creek, the trail climbs steeply for about 2 more miles, 7.7 miles from Trailhead-1, where there is a short, un-signed spur trail that leads to the B-17 crash site.

The trail continues to climb another mile before leveling out. The trail enters the Browns Lake Travel Zone a short distance later and intersects the Browns Lake Trail near the remains of an old shepherd's cabin, which has a reliable water source nearby.

The Flowers Trail continues to the southwest for approximately 4 miles through a more-or-less continuous alpine meadow to the Beaver Creek Trail junction. After this junction, the trail passes junctions with the Zimmerman Trail (S), and then the Mirror Lake Trail also in the alpine zone. This is a great ride or hike, offering diverse landscape and beautiful alpine meadows, which can be rich with wildflowers. Just west of its junction with the Mirror Lake Trail, the Flowers Trail drops steeply into dense forest as it travels about 3 miles toward its end at the south end of the Big South Trail. Note that the 1-mile section of the Flowers Trail southwest of its junction with the Mirror Lake trail is poorly marked and difficult to follow. Go slowly and look for trail tread, rock cairns and the cut ends of down trees that typically indicate the path of the trail.

The upper portions of the Flowers Trail are often used by horse packers and backpackers as a

connecting trail between the Browns Lake, Zimmerman (S), and Mirror Lake Trails.

INFORMATION OF INTEREST: If you are interested in visiting the B-17 crash site, it is located just off the Flowers Trail about 2.75 miles east of the Browns Lake Trail junction. The crash site is about 0.15 mile east of the Flowers Trail near a point where the trail makes a sharp right-hand turn to the west at

N40°36.74' W105°38.16'. It is just below and northeast of a 10,875-ft ridge, at approximately 10,750 ft elevation. On a training mission during WWII a bomber crashed here. Six of the ten people on board survived the crash and two walked east nearly to Jacks Gulch to find help. The Army Corps of Engineers later blew up the remains of the plane.

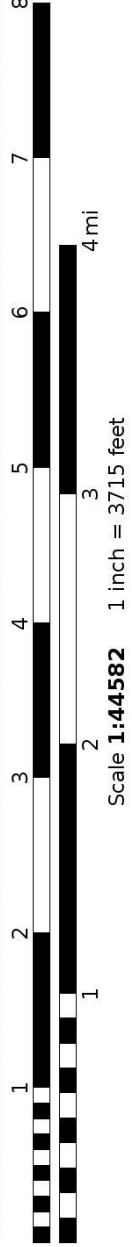
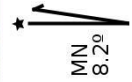
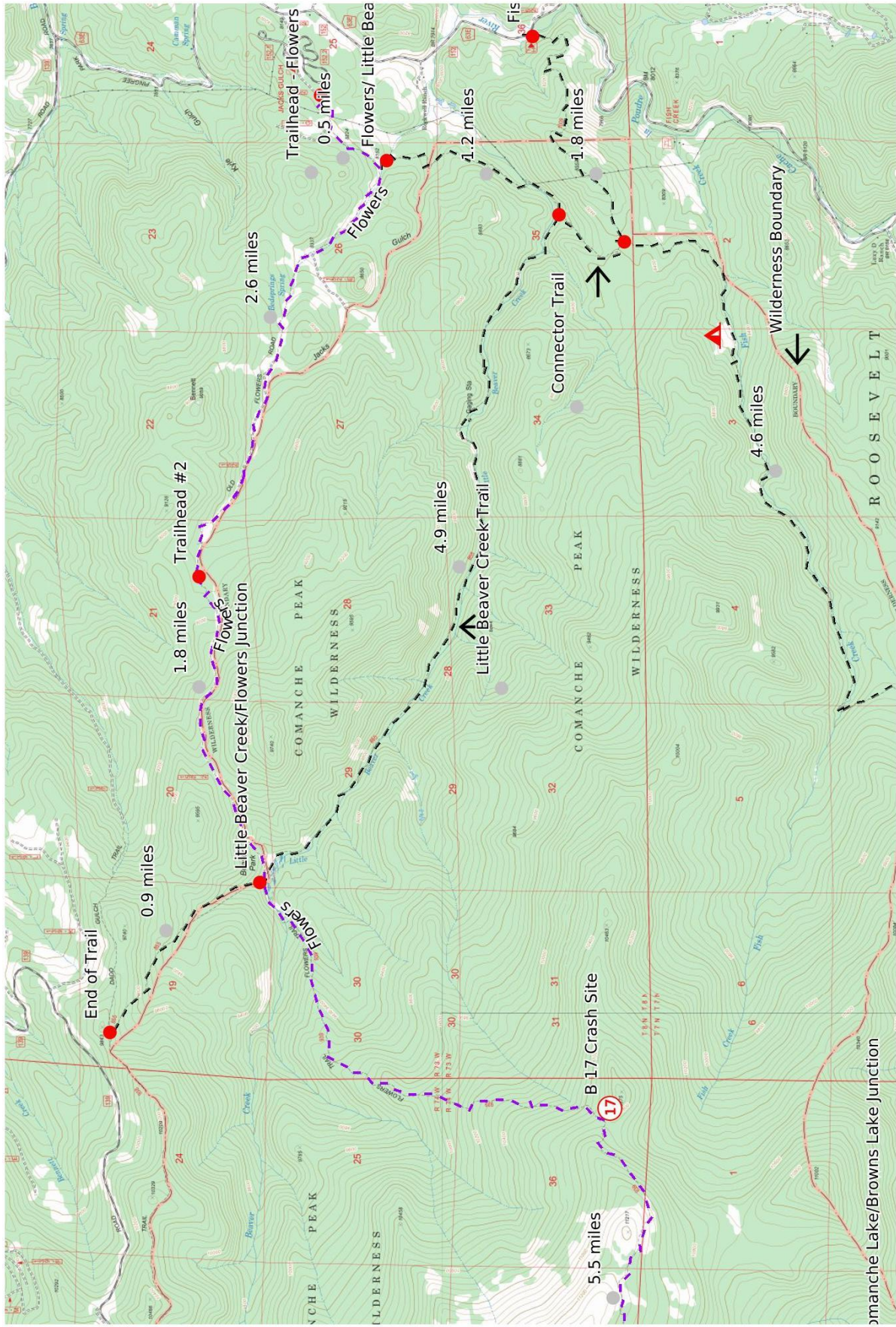
REGULATIONS:

- Camping and Fires - Prohibited within 200 feet of trailhead and parking area. Between TH-1 and TH-2 (at the B-17 crash monument) on the “Old Flowers Road”, dispersed camping is allowed. Beyond that, in the Wilderness: prohibited within 200 feet of water or trail. In the Travel Zone: prohibited within 200 feet of water or trail; no fires; self-contained chemical stoves only.
- Dogs - Must be under voice control until TH-2, on hand-held leash at all times beyond that with hikers; voice control with stock.
- Stock - To avoid spreading noxious weeds, recommend beginning 72 hours prior to the ride, stock should be fed only pellets or certified weed-free hay. Required: throughout the trip, stock *must* be fed only pellets or certified weed-free hay. Overnight stock prohibited in Travel Zone.
- Bicycles and Other Wheeled Conveyances - Prohibited except between TH-1 and TH-2.
- Motorized Transport - Prohibited except between TH-1 and TH-2 when the gate at Jacks Gulch is open.
- Motorized Equipment - Prohibited in Wilderness.
- Group Size - Outside the Wilderness boundary, a single group of more than 74 people must have a USFS permit. In the Wilderness, maximum 12 people and stock, combined

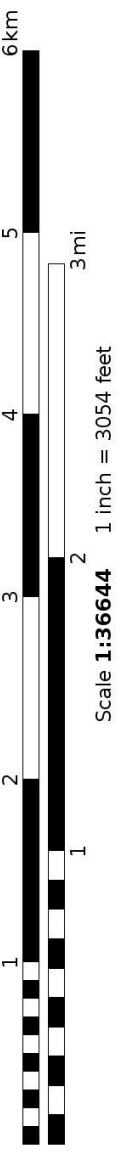
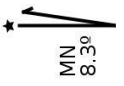
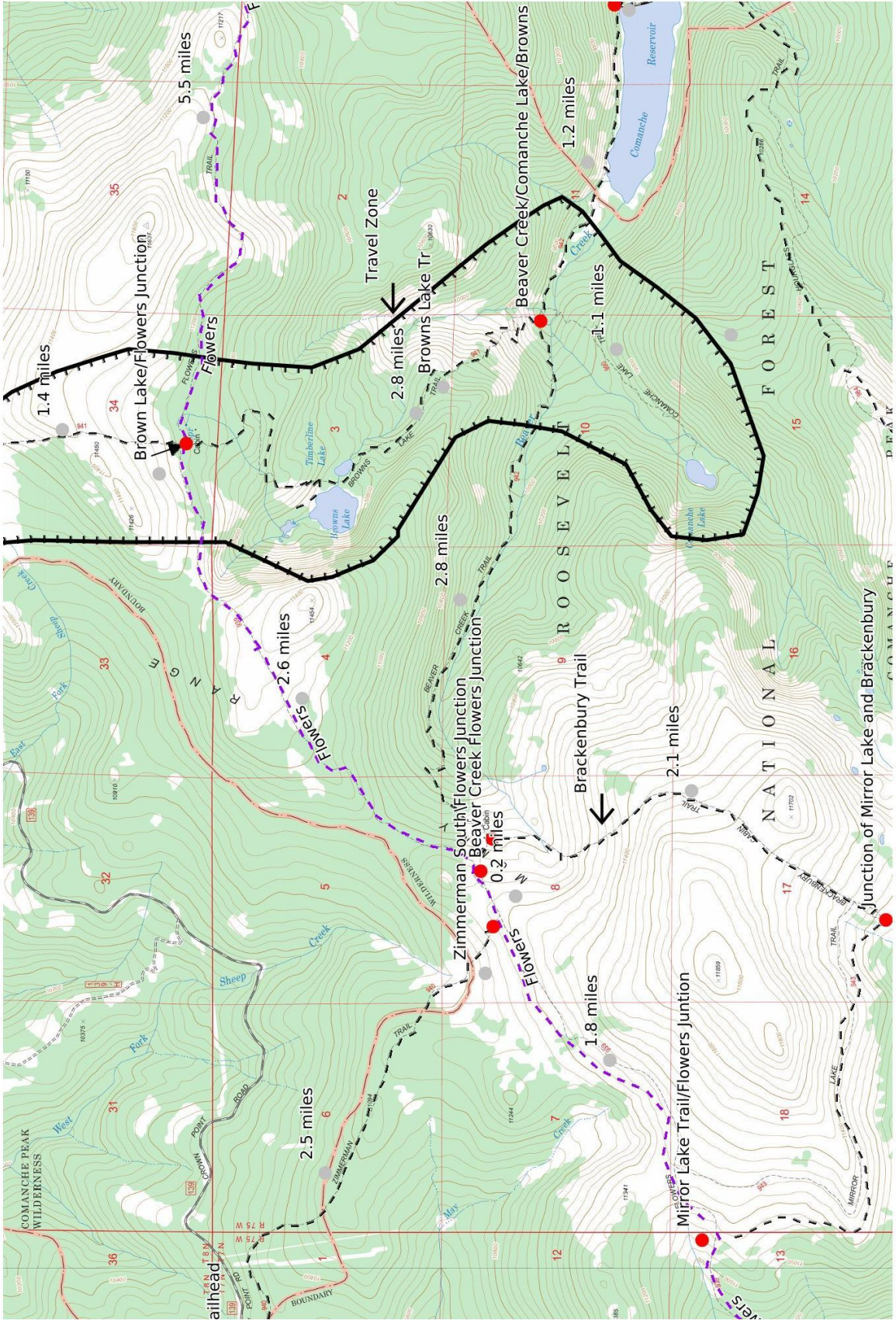
The Flowers Trail begins west of Jacks Gulch Campground and terminates at the Big South Trail. Covering about 18 miles, the Flowers Trail connects with the Little Beaver Creek, Browns Lake, Beaver Creek, Zimmerman (N & S), Mirror Lake, and Big South trails.

| Mileage | GPS Coordinates: datum = WGS84 | Lat/Long | UTM |
|---------|--|------------------------|--------------------|
| 0 | trailhead-1 (FDR-4024; at gate above Jacks Gulch | N40°38.06' W105°31.91' | 455025mE 4498301mN |
| 0.5 | lower junction with Little Beaver Creek Trail | N40°37.76' W105°32.31' | 454461mE 4497749mN |
| 3.1 | trailhead-2 (Old Flowers Road at Wilderness boundary & B-17 crash monument | N40°38.62' W105°34.84' | 450902mE 4499363mN |
| 4.9 | upper junction with Little Beaver Creek Trail above Beaver Park | N40°38.33' W105°36.70' | 448277mE 4498845mN |
| 7.7 | unmarked junction with spur trail to B-17 crash site | N40°36.74' W105°38.16' | 446199mE 4495918mN |
| 7.8 | B-17 crash site | N40°36.74' W105°38.00' | 446424mE 4495916mN |
| 10.4 | junction with Browns Lake Trail | N40°36.78' W105°40.87' | 442378mE 4496020mN |
| 13.0 | junction with Beaver Creek Trail | N40°35.64' W105°43.10' | 439217mE 4493936mN |
| 13.2 | junction with Zimmerman Trail (South) | N40°35.59' W105°43.26' | 438991mE 4493846mN |
| 15.0 | junction with Mirror Lake Trail | N40°34.74' W105°44.84' | 436749mE 4492292mN |
| 17.9 | end of trail at junction with Big South Trail | N40°33.40' W105°46.72' | 434075mE 4489836mN |

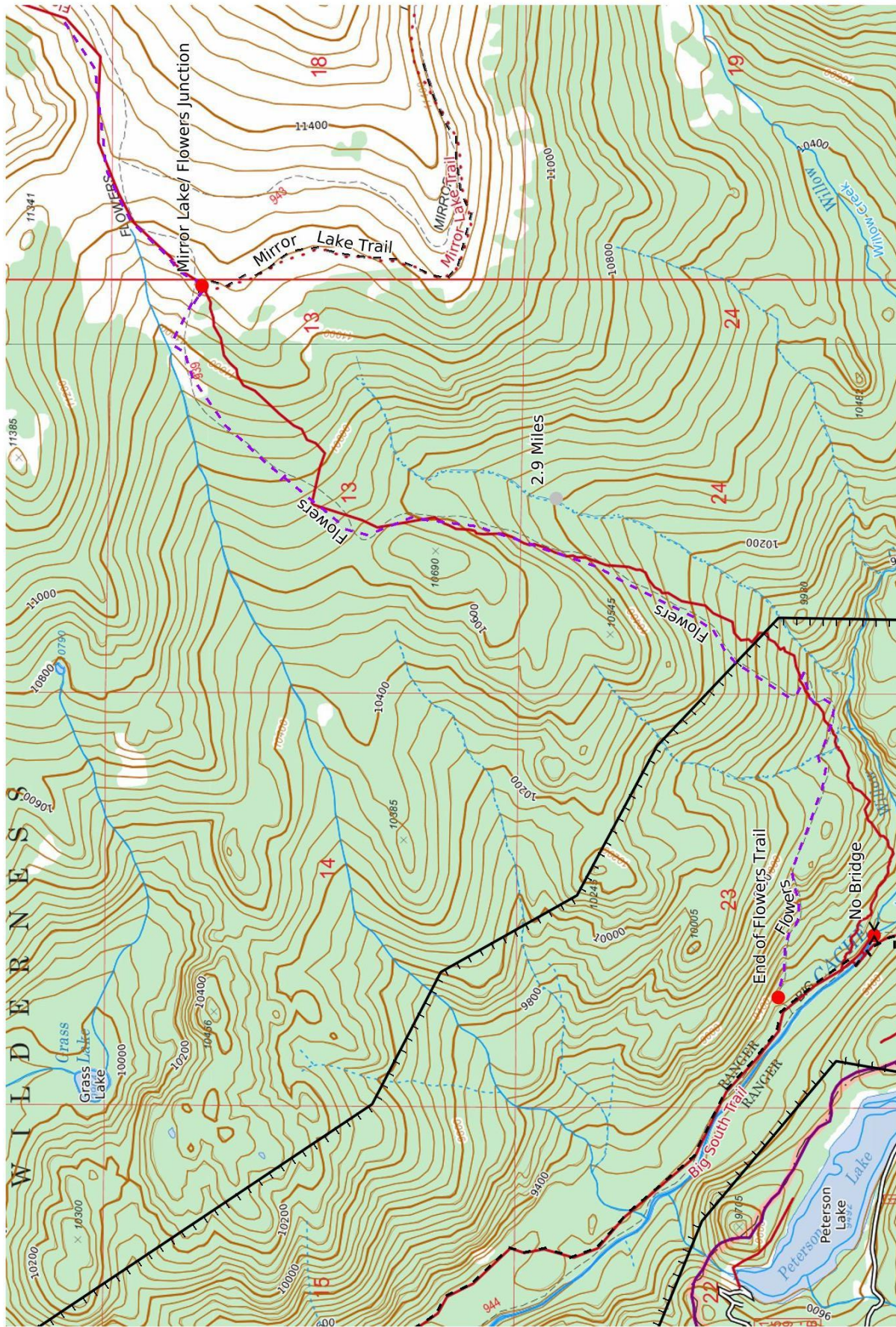
(See next 3 pages for maps of trail.)



Mercator Projection
 WGS84
 UTM Zone 13T



Mercator Projection
 WGS84
 UTM Zone 13T
 CALTOPO



3km



Mercator Projection
 WGS84
 UTM Zone 13T
 Scale 1:20272 1 inch = 1689 feet
 CALTOPO