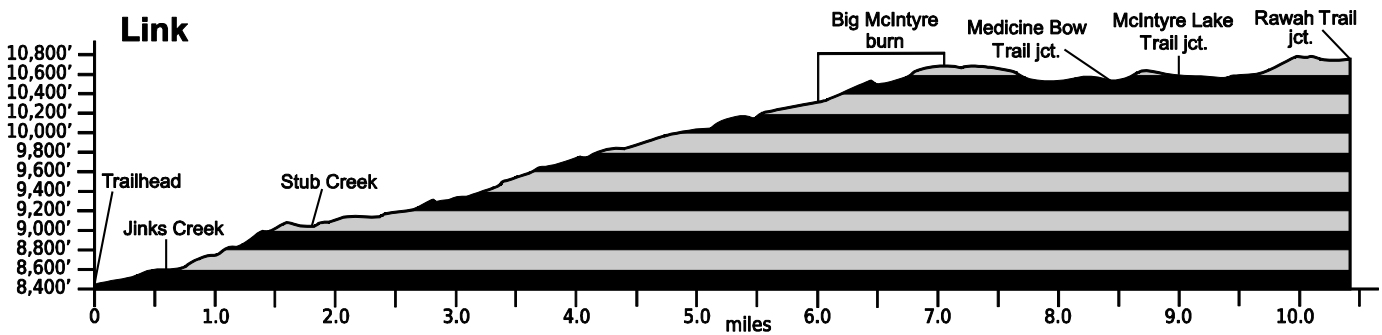


Nov. 10, 2020

Public Trail Information: [Link](#)

Trail(s): Link #963	
Ratings / restrictions:	Hikers - Moderate Stock riders - Moderate Dogs must be on hand-held leash with hikers See complete regulations below INFORMATION OF INTEREST.
Cautions:	Lightning (in exposed alpine areas and in the McIntyre burn area)
Typically accessible:	Late June, after Laramie River Road is open for the season
Wilderness:	Rawah
One-Way Length:	10.4 miles (Link Trailhead to junction with Rawah Trail)
Beginning / Peak Elevations:	8,433 / 10,771
Gain/Loss/Net Gain:	2,593/311/+2,282
Map(s) - Trails Illustrated:	#111 Red Feather Lakes Glendevey; #112 Poudre River Cameron Pass; Mountain Jay - Rawah Wilderness
Map(s) - USGS 7-1/2' Quadrangles:	Glendevey, Rawah Lakes



TRAILHEAD LOCATION:

Rawah Wilderness Area: Drive 51.6 miles on CO-14 from Ted's Place, turn right on the Laramie River Road (CR-103) at mm 71.5, and drive about 15.5 miles to where the road splits. Turn left onto the Glendevey Road (CR-190 on maps, but the sign states CR-99) and follow it for about 2.7 miles. Both the Link and McIntyre trailheads are on the left, just past the Browns Park Campground.

Toilets and water for stock are available at the Campground. The trailhead, which also has toilets, has a large parking lot with good parking for stock trailers.

TRAIL: Except for the portion of this trail in the Big McIntyre Burn area, nearly the entire length of this trail passes through established forest where the trail corridor is readily visible and the tread is in good condition, well-used by hikers and riders, and easy to follow. Its gradients and surface make it an excellent trail for horses.

WATER: Spotty - Near the northern end of this trail, water is readily available from Jinks Creek (0.6 mile from the Link/McIntyre Trailhead at GPS N40°47.42' W105°55.83') and Stub Creek (1.8 miles from the Link/McIntyre Trailhead at GPS N40°46.74' W105°55.88'). The trail crosses a small, unnamed tributary to upper Stub Creek in the Big McIntyre

Burn area at GPS N40°45.25' W105°57.35'. This year-round water source is approximately 5.4 mi south of the Link/McIntyre Trailhead. At the southern end of the trail, water can be obtained from Rawah Lake #1. Water can also be obtained where the Medicine Bow Trail (S) crosses McIntyre Creek about 0.5 mi west of the Link Trail.

CAMPING: Appropriate "dry camping" places along this trail can be found along the edges of the McIntyre Burn area, but most of these will not be close to a water source. The first camping location with water is just after the Stub Creek crossing at 1.8 miles, going to either side in the trees. One of the best is about 3.5 miles from the trailhead, where a short unofficial trail on the right (north) leads to an old road. Walk about 175 yards to the best area. Another camping area with water is to the southeast side of the trail near the northeast edge of the Burn and close to the unnamed tributary of upper Stub Creek (about 5.4 mi south of the Link/McIntyre Trailhead). Please camp 200 or more feet from trail and from water to maintain water purity and access for wildlife.

SEASONAL: Not accessible in winter, as Laramie River Road is not plowed.

DESCRIPTION: Though this is a long trail, the first couple of miles is quite gentle with excellent tread. The first half mile is open, with diverse flora. After that, it passes through a lodgepole pine forest heavily

impacted by mountain pine beetle and crosses a couple of small streams relatively close to the trailhead. Eventually the trail breaks out into the Big McIntyre Burn, an area that has not completely recovered from two different fires that occurred in the 1940s. The views from the burn area back to the east and north are spectacular. The trail is easy to follow as it climbs steadily through the burn and then beyond to a crest. The forest beyond this point is dominated by Douglas-fir and Engelmann spruce.

From this point on the trail levels off. At about 8.4 miles the Link Trail junctions with the Medicine Bow

Trail (South). At 8.9 miles, the Link Trail junctions with the McIntyre Lake Trail. Finally, after 10.4 miles the Link Trail ends at its junction with the Rawah Trail (North) at Rawah Lake #1.

INFORMATION OF INTEREST: Part of this trail was originally built as a wagon road associated with the “upper ditch” project to re-direct water from the Rawah into the Cache La Poudre by Wallis Link about 1903 (see Camp Lake trail patrol description for more details).

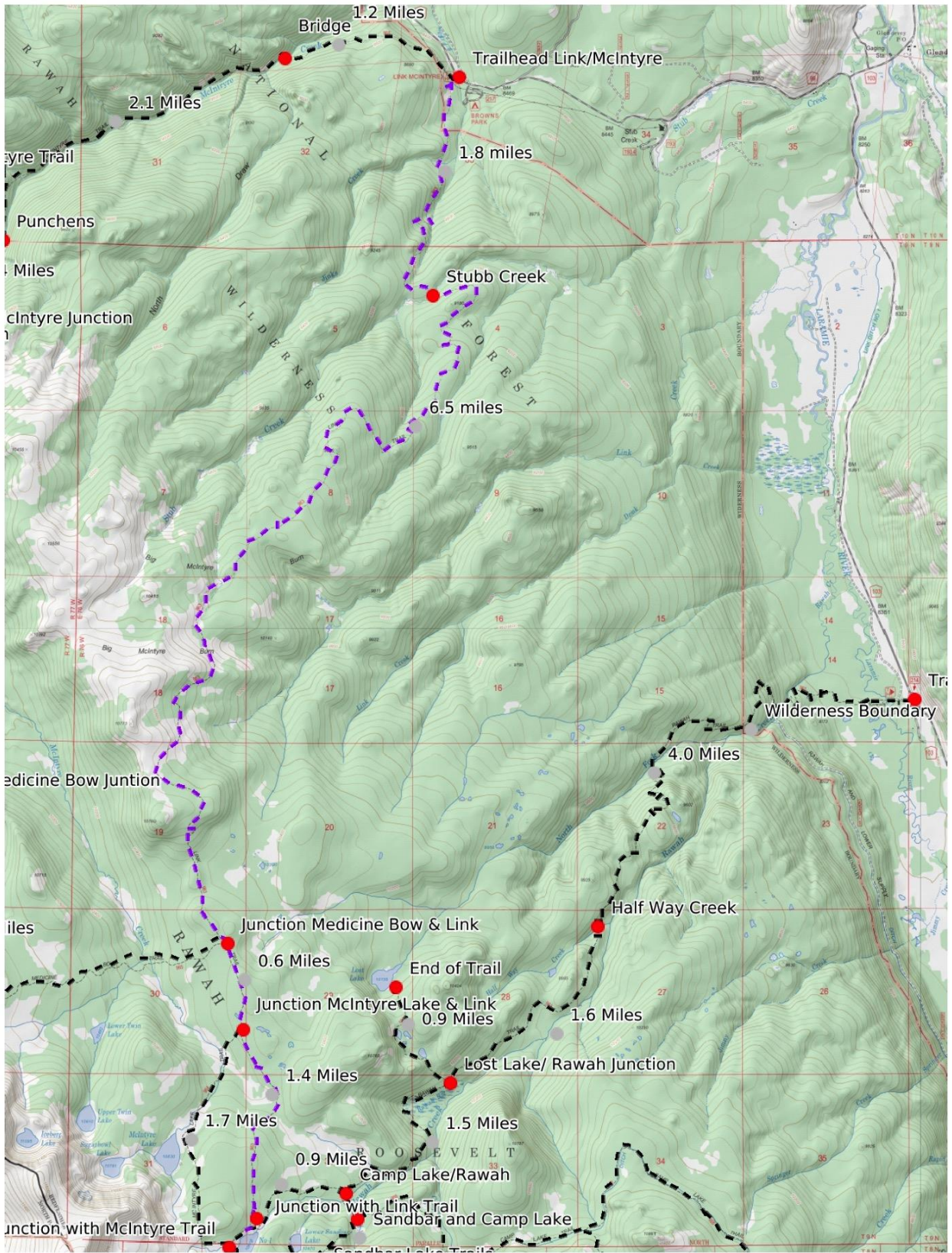
Mileages provided are approximate.

REGULATIONS:

- Camping and Fires - Prohibited within 200 feet of trailhead, toilets and parking area. Since the trail is entirely in Wilderness, prohibited within 200 feet of water or trail.
- Dogs - Must be on hand-held leash with hikers, voice control with stock.
- Stock - To avoid spreading noxious weeds, recommend beginning 72 hours prior to the ride stock feed should only be pellets or certified weed free hay. Required: throughout the trip, any feed *must* be pellets or certified weed-free hay.
- Bicycles and Other Wheeled Conveyances - Prohibited.
- Motorized Transport and Equipment - Prohibited.
- Group Size - Maximum 12 people and stock, combined.

Mileage	GPS Coordinates: datum = WGS84	Lat/Long	UTM	
0	Link/McIntyre trailhead (on Glendevey Road; CR-190)	N40°47.87' W105°55.73'	421644m	4516730m
0.6	Jinks Creek	N40°47.42' W105°55.82'	421509m	4515898m
1.8	Stub Creek	N40°46.74' W105°55.89'	421397m	4514641m
5.4	small creek crossing (unnamed tributary of upper Stub	N40°45.24' W105°57.33'	419342m	4511888m
6.0	southern end of the Big McIntyre burn area	N40°44.24' W105°57.78'	418688m	4510045m
8.4	junction with Medicine Bow Trail (South)	N40°43.38' W105°57.34'	419290m	4508447m
8.9	junction with McIntyre Lake Trail	N40°42.91' W105°57.19'	419492m	4507575m
10.4	end of trail at junction with Rawah Trail (North)	N40°41.86' W105°57.14'	419541m	4505632m

(See next page for map of trail.)



Mercator Projection
 WGS84
 USNG Zone 13TDF
 CalTopo

