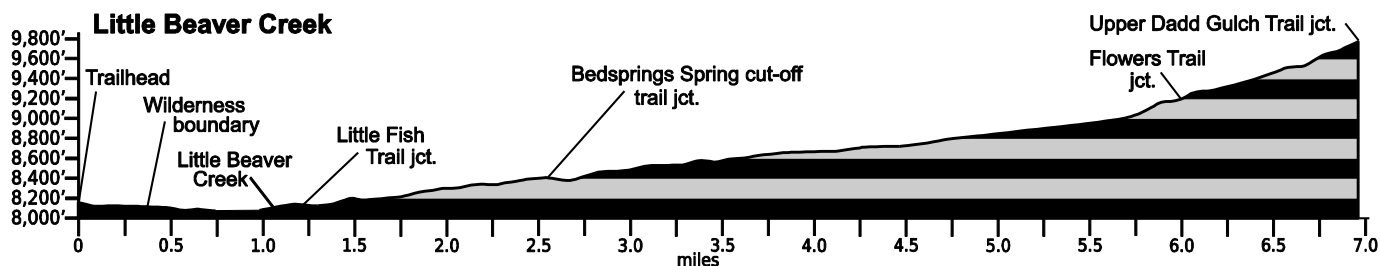


Mar. 25, 2022

Public Trail Information: Little Beaver Creek

Trail(s): Little Beaver Creek #948 (#855); Little Fish #948-1	
Ratings / restrictions:	Hikers - Moderate Stock riders - Challenging (see comments under DESCRIPTION) Dogs with hikers must be on hand-held leash See complete REGULATIONS below DESCRIPTION
Cautions:	Burn area; Moose
Typically accessible:	Year-round (see SEASONAL below)
Wilderness:	Comanche Peak
One-Way Length:	6.9 miles [+ 0.5 mile for Little Fish Creek]
Elevation - Beginning / Peak:	8,151 / 9,785
Gain/Loss/Net Gain:	1,726/93/+1,633
Map(s) - Trails Illustrated:	#112 Poudre River Cameron Pass
Map(s) - USGS 7-1/2' Quadrangles:	Pingree Park, Rustic



TRAILHEAD LOCATION:

Pingree Park Area: Drive 26.5 miles from Ted's Place to the Pingree Park Road (at mm 96.1), cross the Cache La Poudre River, and drive 6.3 miles to the Jacks Gulch Campground. Drive through the Campground to the trailhead for the Flowers Trail/Old Flowers Road that is located at the southwest corner. You may park here and walk 0.5 mile up Flowers Trail (which is a 4-wheel drive road in this area) to the Little Beaver Creek Trailhead, or, if the gate is open and it's not too muddy, you can drive the 0.5 mile to the Little Beaver Creek Trailhead.

Note: As of this update, no accommodations are available at Jacks Gulch Campground, due to the Cameron Peak Fire.

CAUTIONS: This trail was in the Cameron Peak Fire of 2020, the largest fire in Colorado history, which burned nearly 209,000 acres. This trail has moderate areas that were burned but much of the trail is still green and the trail is very fine to hike or ride.

Cautions in Burn Areas:

- Falling Trees
 - Tree root systems can be burned - compromised or non-existent. Thus, trees in burned areas fall at a high rate for some time after a fire.
 - There may be a large number of trees on the trail.

- Stump Holes—Tree stumps sometimes burn below ground level and can leave dangerous holes, often filled in loosely by ash or needles.
- Difficult to Follow Trails
 - At times the trail can be difficult or impossible to follow with no vegetation or tread visible.
 - Even in formerly familiar terrain, the landscape can be disorienting.
- Rock Slides are more likely, due to lack of vegetation and root damage.
- Flash Flooding is likely even with small rainstorms and may occur way downstream from rain.

WATER: **Abundant** - Water is easy to access because most of this trail follows closely along the banks of Little Beaver Creek [but note that the 0.75 mile below the junction with the Upper Dadd Gulch Trail, is dry].

CAMPING: There are several nice meadows and/or open benches on the north side of the trail/creek drainage where you can get at least 200 ft away from the trail and stream and out-of-sight from the trail. Two good options are: (a) a little below the jct. of the Little Beaver Creek trail with the shortcut trail from Bedsprings Spring at GPS N40°37.35' W105°33.54' [2.25 miles from the trailhead] and (b) a little upstream of the old stream gauging station at GPS N40°37.44' W105°33.98' [2.75 miles from the trailhead]. (This location has a fairly substantial rock fire ring.)

Once you reach Beaver Park you have several options. If you plan to head west on the Flowers Trail, stock up on water from Little Beaver Creek as it will become scarce to non-existent as you climb to the southwest through dense timber. Near Beaver Park, another good, less frequented camping location that is also adequate for stock use is just off to the northwest from Beaver Park continuing on the Little Beaver Creek Trail. Additional camping sites can be found to the south west of Beaver Park. From Beaver Park continue west along the bank of Little Beaver Creek to the water crossing. Continue on approximately 0.25 to 0.5 mile northwest (on the Flowers Trail) to locate some nice benches and protected spots in the timber off the trail. Along this stretch you won't be far from the water source of Little Beaver Creek yet you'll be off the beaten path. This is a nice option if you are continuing westward (on the Flowers Trail) the next day to go deeper into the Comanche Peak Wilderness. See REGULATIONS below.

SEASONAL: Usually accessible in winter. Jacks Gulch Campground is gated and closed in winter, so park near, but not in front of, the gate off Pingree Park Road. Be sure you can get out if the snowplow comes by. Walk, ski, or snowshoe through the campground and along old Flowers Road for about 1.0 mile to the Little Beaver Creek trailhead.

DESCRIPTION: The trail begins in open forest. After hiking 0.3 mile from the Little Beaver Creek TH, you will cross a small stream in Jacks Gulch and soon enter the Comanche Peak Wilderness. For the next 0.7 mile the trail will climb, then traverse a hillside as it drops into the Little Beaver Creek drainage.

Just after you cross Little Beaver Creek (via a horse ford or a 2-log stringer bridge 1.1 mile from the trailhead) you will see an unofficial trail leading northeast. (This trail follows the stream to and through the Rockwell Ranch [private property] on Pingree Park Road and requires that you ford the stream.) Don't go off trail or camp on non-USFS lands.

Continue southwest along the creek up the Little Beaver Creek Trail toward Beaver Park. At 1.2 miles

from the trailhead, you will intersect with Little Fish Trail (not marked by a sign), which is a 0.5 mile connector to Fish Creek Trail. Continue up the Little Beaver Creek Trail for another 1.5 miles where you will encounter another (unsigned) trail junction on the north (right) side of the trail (about 2.7 miles from the trailhead). This is the junction with the unmaintained, non-system "cut-off" trail between Bedsprings Spring and the Little Beaver Creek Trail. The remains of an old stream-flow gauging station can be found in the stream channel about 300 ft above this trail junction (at N40°37.38' W105°33.94'). Continue northwest up the Little Beaver Creek for about 3 more miles to the upper end of Beaver Park and the junction with the Flowers Trail.

Stock riders note: After the second bridge along Little Beaver Creek, there are some places that are narrow for horses. About half-way to Beaver Park, there are two small, rocky ridges that are very difficult for horses to cross.

Beaver Park is a very scenic and pleasant area, as the trail climbs gradually up along the creek. Beaver are active along the stream and the ponds in Beaver Park and eastern brook trout are plentiful in the creek's crystal clear waters. Beaver Park is the destination for most backpackers, for good reason, since there are several picturesque beaver ponds in this area and by climbing the ridge to the north you get great views of the Mummy Range to the south. However, it is difficult to find legal campsites that are over 200 ft from water and/or the trail. (See CAMPING above.)

The Little Beaver Creek Trail continues northwest for another mile and ends at its intersection with the Upper Dadd Gulch Trail. Above Beaver Park the trail becomes steep and receives relatively little use. From Beaver Park you can either return the way you came, on the Little Beaver Creek Trail, or go back to Jacks Gulch via the Flowers Trail (Old Flowers Road).

Mileages shown are approximate.

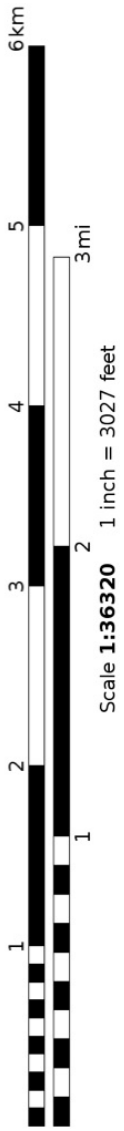
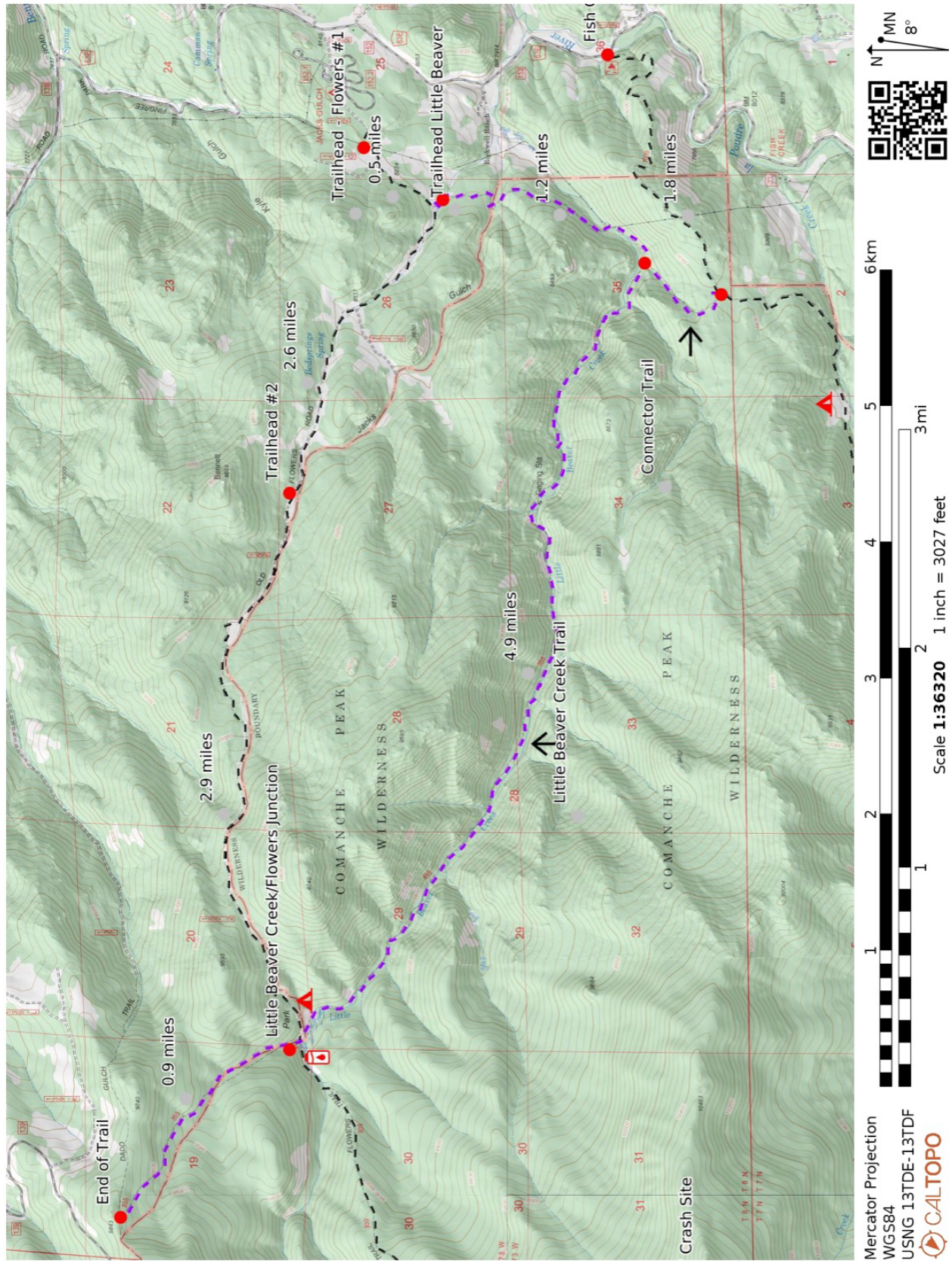
REGULATIONS:

- Camping and Fires - Prohibited within 200 feet of trailheads and parking areas. Outside the Wilderness boundary: recommend at least 100 feet from water and trail. In the Wilderness: prohibited within 200 feet of water or trail.
- Dogs - Must be on hand-held leash with hikers; voice control with stock.

- Stock - To avoid spreading noxious weeds, recommend beginning 72 hours prior to the ride, stock should be fed only pellets or certified weed-free hay. Required: throughout the trip, stock *must* be fed only pellets or certified weed-free hay.
- Bicycles and Other Wheeled Conveyances - Prohibited.
- Motorized Transport - Prohibited.
- Motorized Equipment - Prohibited in Wilderness.
- Group Size - Outside the Wilderness boundary: a single group of more than 74 people must have a USFS permit. In the Wilderness: maximum 12 people and stock, combined.

Mileage	GPS Coordinates: datum = WGS84	Lat/Long	UTM	
0	trailhead at junction with Flowers Trail (Old Flowers	N40°38.32' W105°38.63'	448376m	4498826mN
0.3	Wilderness boundary at fence line	N40°37.56' W105°32.32'	454385m	4497380mN
1.1	lower stringer bridge across Little Beaver Creek	N40°37.11' W105°32.44'	454267m	4496548mN
1.1	junction with cut-off trail to Rockwell Ranch	N40°37.12' W105°32.43'	454282m	4496567mN
1.2	junction with Little Fish Trail	N40°36.96' W105°32.64'	453984m	4496273mN
1.6	upper stringer bridge across Little Beaver Creek	N40°37.05' W105°32.89'	453632m	4496441mN
2.7	junction with cut-off trail to Bedsprings Spring	N40°37.40' W105°33.89'	452227m	4497098mN
2.7	old gauging station	N40°37.38' W105°33.94'	452156m	4497062mN
6.1	junction with Flowers Trail above Beaver Park	N40°38.32' W105°36.69'	448291m	4498826mN
6.9	end of trail at junction with Upper Dadd Gulch Trail	N40°39.04' W105°37.60'	447018m	4500167mN

(See next page for map of trail.)



Mercator Projection
WGS84
USNG 13TDE-13TDF
CALTOPO

Little Beaver Creek: 4