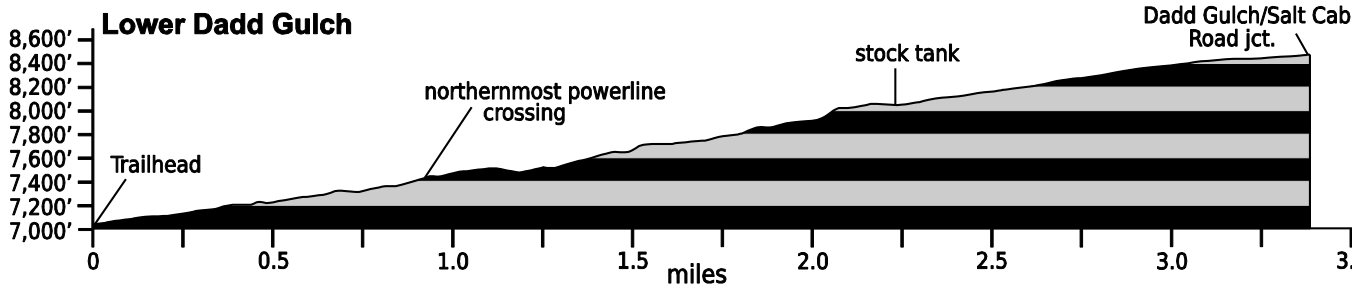


Feb. 1, 2022

## Public Trail Information: Lower Dadd Gulch

Trail(s): Lower Dadd Gulch #988 (#1015)	
Ratings / restrictions:	Hikers – Moderate Stock riders – Easy Bicycles allowed See complete REGULATIONS below DESCRIPTION
Cautions:	Cattle drives may be encountered on this trail in May and September; Bicycles on trail; Burn area
Typically accessible:	Year round (see SEASONAL below)
Wilderness:	None
One-Way Length:	3.4 miles (trailhead to junction with Dadd Gulch/Salt Cabin Park Road)
Elevation – Beginning / Peak:	7,024 / 8,489
Map(s) - Trails Illustrated:	#112 Poudre River Cameron Pass
Map(s) - USGS 7-½' Quadrangles:	Rustic



**TRAILHEAD LOCATION:**

Lower Poudre Canyon Area: Drive 29 miles from Ted’s Place (to mm 93.2). Before crossing a bridge over the Poudre River east of Indian Meadows Resort, look for a parking lot adjacent to a corral on the south (left) side of the highway. The trailhead is located uphill from the corral. Remember to close the corral gate.

Toilets are available across the highway from the parking lot. Please do not park in front of the cattle pen gate in the southwest corner of the parking lot. Limited stock trailer parking is available at the trailhead parking area for a small trailer. To turn around, open the gate to the cattle pen in the southwest corner of the parking lot. (This is also the stock access to the trail.) Be sure the gate is closed afterward, as there are often cattle grazing. Additional stock trailer parking is available with a turn-around across Hwy. 14.

**CAUTIONS:** This trail was in the Cameron Peak Fire of 2020, the largest fire in Colorado history, which burned nearly 209,000 acres. It has minor areas that are burned but most of the trail is still green and the trail is in good shape.

**WATER: Abundant** - Except in dry years or very late in the summer, water is available from the creek along the lower 2+ miles of the trail.

**CAMPING:** Suitable locations for camping can be found along the trail from GPS N40°40.74’ W105°33.84’ to almost GPS N40°40.64’ W105°34.09’ (particularly on the west side of the trail), but they are dry. See REGULATIONS below.

**SEASONAL:** Accessible in the winter. The parking lot is normally clear from sun exposure. Traction devices are needed. Snowshoes are usually needed on the upper portion of the trail. Though this trail typically holds snow and ice, it does not usually have good conditions for skiing.

**DESCRIPTION:**

This trail winds up a gulch to the southwest on an old jeep track and stock trail before intersecting the old Dadd Gulch/Salt Cabin Park Road. This path is well-worn and easy to follow. In the spring and summer, a small spring-fed stream meanders through the gulch and the trail crosses back and forth over this small, unnamed creek a total of 18 times. Wildflowers can be abundant along the stream, especially in the spring, as well as through the meadows. Between 0.5 mile and 1.5 miles above the trailhead, the trail passes under some utility lines several times. At about 2 miles, the trail heads steeply uphill and away from the stream and passes near several interesting rock outcroppings before climbing gradually through an open area. Soon the trail enters a meadow with a nice grove of quaking aspens. A short distance above the meadow, on the east (left) side of the trail, is a stock tank that lately appears to be empty and

nonfunctional. From the tank, the trail continues for another 0.75 mile to the crest of a ridge, which provides nice views of the surrounding country.

As you continue up the ridge you will eventually pass through an opening in a barbed-wire fence. The trail ends a few hundred yards further, where it meets the Dadd Gulch/Salt Cabin Park Road.

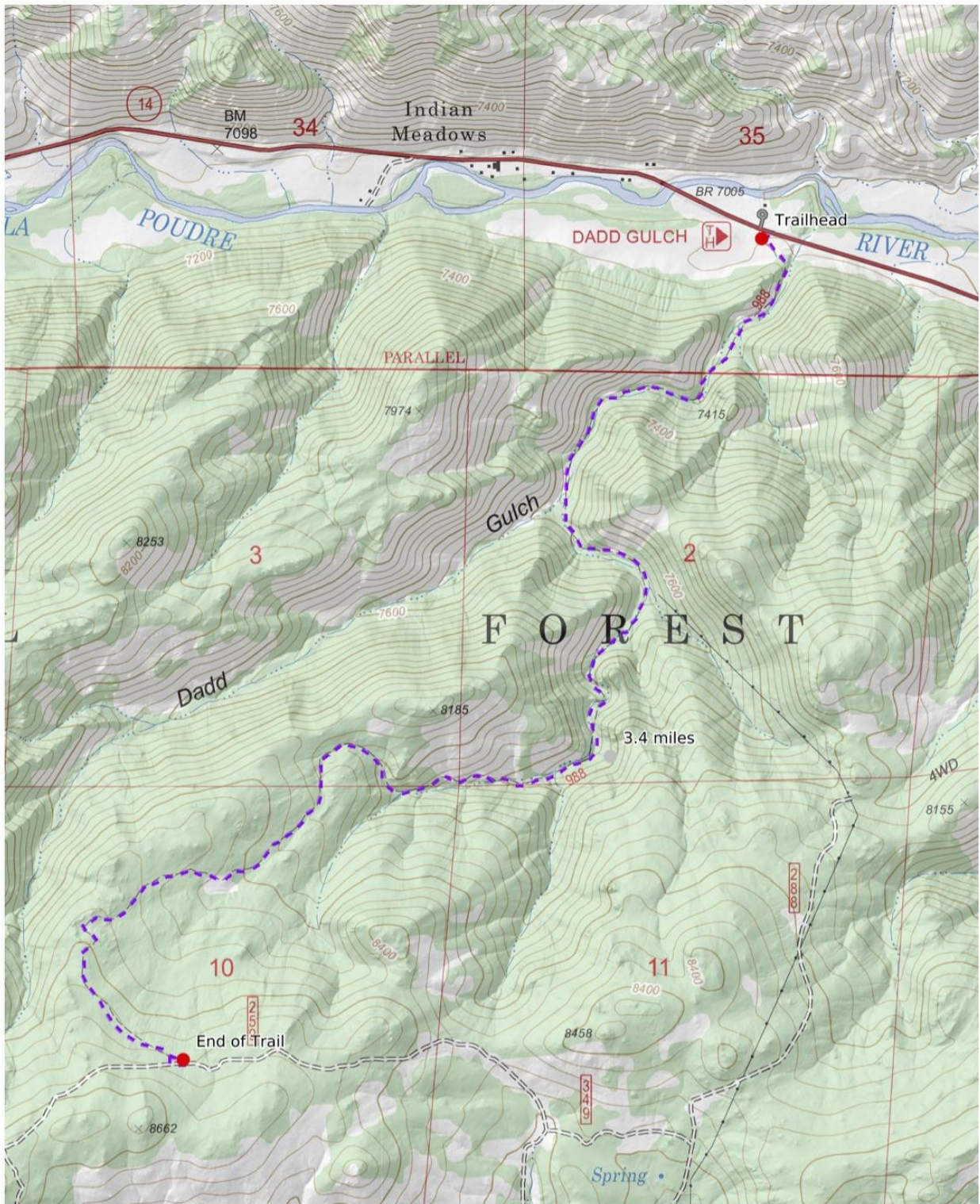
**REGULATIONS:**

- Camping and Fires - Prohibited within ¼ mile of trailhead. Past that, recommend at least 100 feet from water and trail.
- Dogs - Must be under voice control at all times.
- Stock - To avoid spreading noxious weeds, recommend beginning 72 hours prior to the ride, stock should be fed only pellets or certified weed-free hay. Required: throughout the trip, stock *must* be fed only pellets or certified weed-free hay.
- Bicycles and Other Wheeled Conveyances - Allowed.
- Motorized Transport - Prohibited.
- Group Size - A single group of more than 74 people must have a USFS permit.

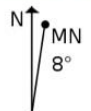
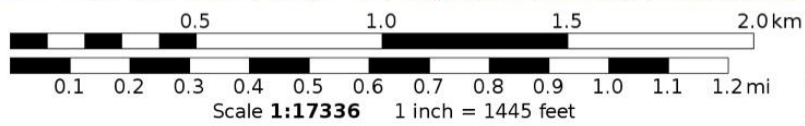
Mileage	GPS Coordinates: datum = WGS84	Lat/Long	UTM
0	trailhead (on CO-14)	N40°41.90' W105°32.49'	454251mE 4505411mN
0.7	lowest site where power line crosses the trail	N40°41.56' W105°32.86'	453727mE 4504785mN
2.5	stock tank (about 45 ft east of trail)	N40°40.80' W105°33.60'	452675mE 4503385mN
3.2	old fence line and gate	N40°40.52' W105°34.07'	452010mE 4502871mN
3.4	end of trail at old Dadd Gulch/Salt Cabin Park road	N40°40.40' W105°33.85'	452319mE 4502647mN

**This trail is adopted by: The Taming of the Crew (TotC)**

**(See next page for map of trail.)**



Mercator Projection  
 WGS84  
 USNG Zone 13TDF  
 CALTOPO



Lower Dadd Gulch: 3