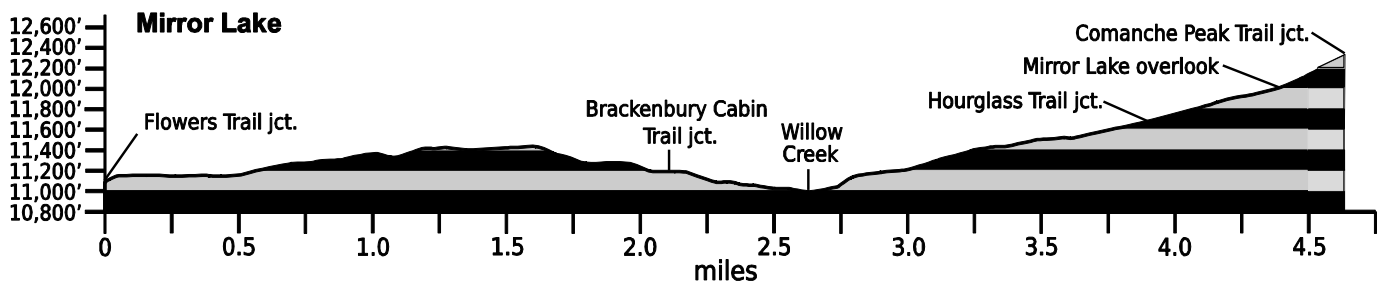


Jan. 31, 2021

Public Trail Information: Mirror Lake

Trail(s): Mirror Lake #943	
Ratings / restrictions:	Hikers – Moderate Stock riders – Moderate Dogs must be on hand-held leash with hikers See complete REGULATIONS below DESCRIPTION
Cautions:	Lightning in exposed alpine areas
Typically accessible:	Late June, after Crown Point Road is open
Wilderness:	Comanche Peak
One-Way Length:	4.9 miles (from Flowers Trail to Comanche Peak Trail)
Beginning / Peak Elevations:	11,104 / 12,516
Gain/Loss/Net Gain:	1,854/442/+1,412
Map(s) - Trails Illustrated:	#112 Poudre River Cameron Pass (& #200 RMNP)
Map(s) - USGS 7-½ ' Quadrangles:	Comanche Peak



TRAIL LOCATION:

Pingree Park Area: The Mirror Lake Trail begins at the Flowers Trail and intersects with the Brackenbury Trail and the Hourglass Trail, ending at the Rocky Mountain National Park boundary. There are two practical ways to access it: 1) from the Zimmerman Trail (South) via the Flowers Trail, 2) from the Zimmerman Trail (South) via the Flowers, Beaver Creek, and Brackenbury Trails (with a very short distance on the Flowers and Brackenbury Trails). See the Zimmerman (South), Flowers, and Brackenbury trail descriptions for details.

Assuming that you will begin your patrol from the Zimmerman Trail (South):

TRAIL: The general route of this trail, if not the actual trail tread, is marked by over 120 medium to large rock cairns. In many places, the cairns indicate the general route of the trail but not its actual path, because no visible path exists. Follow these cairns carefully because the actual tread is obscure or non-existent for long stretches. Rock cairns along Mirror Lake Trail from the junction with Flowers Trail to the junction with the Brackenbury Trail (about 83 cairns), from the Monroe Cabin to the overlook of Mirror Lake (at Mirror Lake overlook) (marked by at least 49 cairns), and from Mirror Lake overlook to the end of the trail) are essential for indicating the general route of the trail because there is no trail tread in these sections of the Mirror Lake Trail.

WATER: **Available** The best water source along this trail is at the Willow Creek crossing. Water is also available from some small creeks, one that crosses the trail before the Brackenbury junction and two that cross the trail beyond the Monroe cabin.

CAMPING: Camping is possible near the small creeks noted above and near the junction with the Brackenbury Trail. Except during bow and black powder elk/deer hunting season, the best campsite is probably at the location of the Comanche Wilderness Outfitter main campsite just northeast of the crossing of Willow Creek. Another camping location is a little farther up the trail, in the vicinity of the Monroe Cabin.

SEASONAL: Not accessible in winter, as Crown Point Road is not plowed.

DESCRIPTION: If you begin your patrol from the Zimmerman Trail (South) and access this trail from the Flowers Trail, your patrol begins at about 11,104 ft elevation when you turn off the Flowers Trail to the south (the junction is marked with a large rock cairn that has a trail sign on a signpost sticking out of it). The trail maintains a more or less constant elevation as it goes due south for about 0.7 mile and then turns sharply to the east and continues another 1.5 miles. At this point it meets the Brackenbury Trail dropping down from the northeast. The trail turns nearly due south again and descends for about 0.5 mile to Willow Creek. The trail then climbs about 0.25 mile to the

southwest and then turns sharply to the east-southeast and climbs for about 0.9 mile until it meets the Hourglass Trail coming down from the northeast. At this point, the Mirror Lake Trail turns to the southeast and climbs to the south-southeast for about 0.5 mile before arriving at Mirror Lake overlook where you get a spectacular view of the Mirror Lake basin. The trail then turns to the northeast and follows the ridgeline and the RMNP boundary for another 0.5 mile where it ends at its junction with the Comanche Peak Trail coming out of RMNP. The route of the final 0.5 mi of the trail (from the Mirror Lake overlook) to the trail's end is quite steep. The trail's route ranges from 20 to 100 ft north of the half dozen RMNP boundary markers (red Carsonite wands and metal T-posts). Although the trail tread is

intermittently visible/invisible, its route is well marked by a series of medium to large rock cairns. Note: The junction of the Mirror Lake and Comanche Peak trails is about 0.5 mile below the top of Comanche Peak (at 12,681 ft).

If you want, you can continue hiking into RMNP for roughly another 2.5 miles to Mirror Lake (first on the Comanche Peak Trail and then on the RMNP Mirror Lake Trail). However, note that stock are prohibited on the RMNP-portion of this trail.

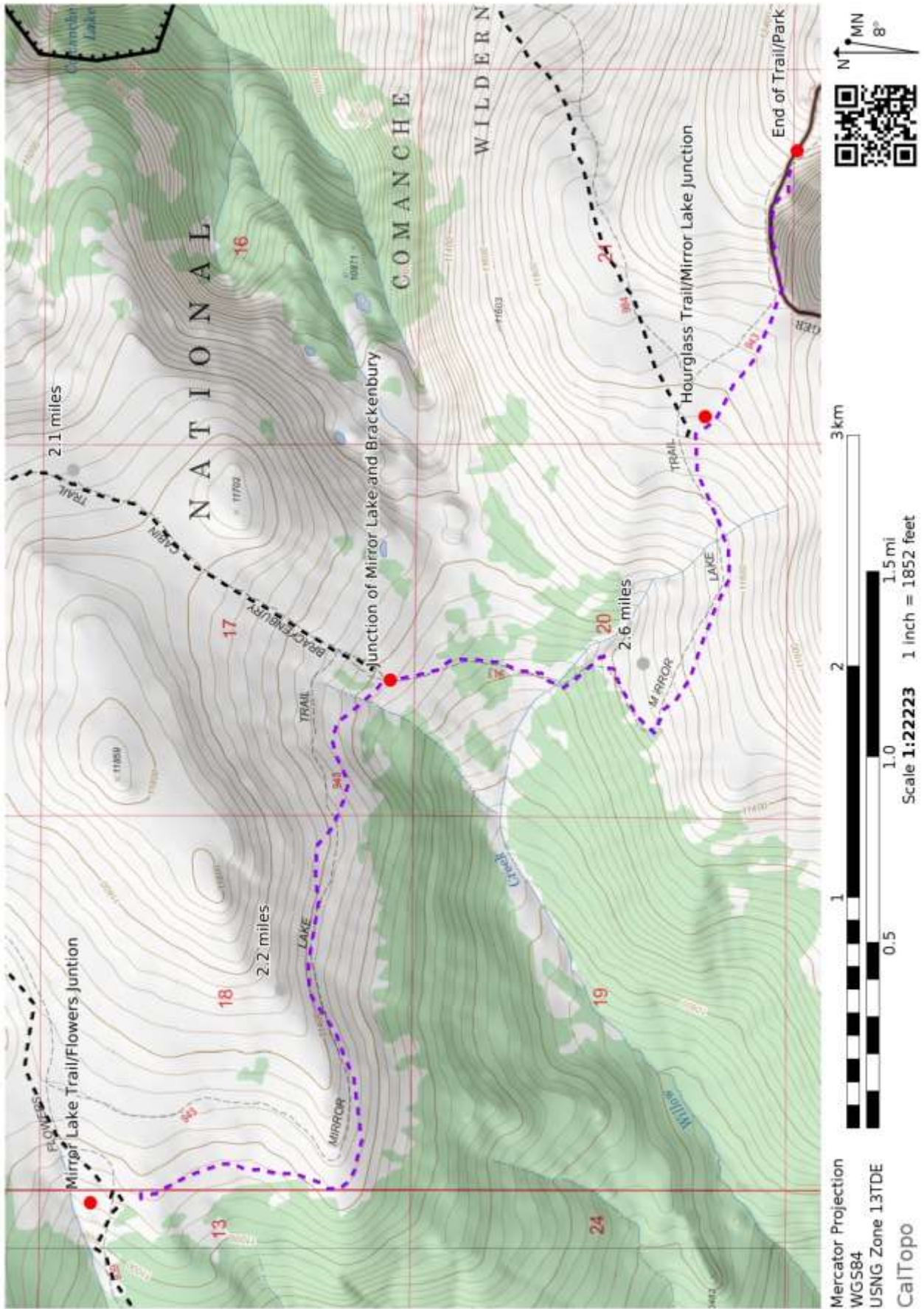
The portion of the Mirror Lake Trail in the Comanche Peak Wilderness is nearly entirely above timberline and affords panoramic views and access to lots of alpine wildflowers in the mid and late summer.

REGULATIONS:

- Camping and Fires - Prohibited within 200 feet of water or trail, as this trail is entirely in the Comanche Peak Wilderness.
- Dogs - Must be on hand-held leash with hikers; voice control with stock.
- Stock - To avoid spreading noxious weeds, recommend beginning 72 hours prior to the ride, stock should be fed only pellets or certified weed-free hay. Required: throughout the trip, stock *must* be fed only pellets or certified weed-free hay.
- Bicycles and Other Wheeled Conveyances - Prohibited.
- Motorized Transport and Equipment - Prohibited.
- Group Size - Maximum 12 people and stock, combined.

Mileage	GPS Coordinates: datum = WGS84	Lat/Long	UTM
0	"trailhead" at junction with Flowers Trail	N40°34.73' W105°44.85'	436735mE 4492273mN
2.2	junction with Brackenbury Trail	N40°34.12' W105°43.25'	438983mE 4491126mN
2.6	Willow Creek crossing	N40°33.72' W105°43.26'	438962mE 4490386mN
	Monroe Cabin	N40°33.49' W105°43.41'	438747mE 4489962mN
	junction with Hourglass Trail	N40°33.40' W105°42.50'	440030mE 4489785mN
	Mirror Lake overlook at RMNP boundary	N40°33.19' W105°42.13'	440676mE 4489410mN
	end of Mirror Lake Trail at its junction with the Comanche Peak Trail	N40°33.09' W105°41.56'	441345mE 4489196mN

(See next page for map of trail.)



Mercator Projection
 WGS84
 USNG Zone 13TDE
 CalTopo

Mirror Lake: 3