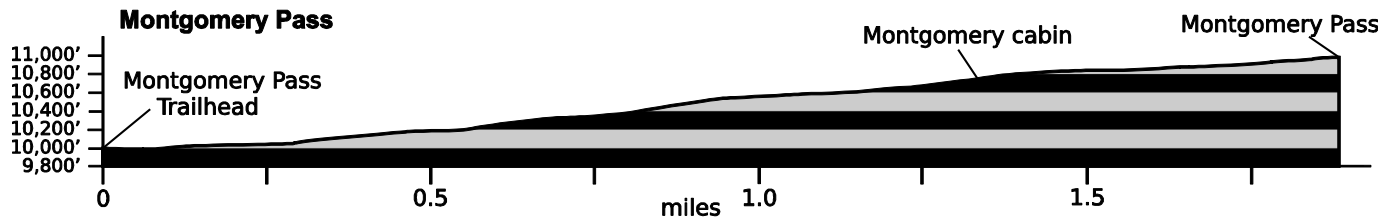


Jan. 4, 2021

Public Trail Information: Montgomery Pass

Trail(s): Montgomery Pass #986	
Ratings / restrictions:	Hikers –Moderate Stock riders – Moderate See complete REGULATIONS below INFORMATION OF INTEREST
Cautions:	Lightning in exposed alpine areas near the pass; avalanches in winter near “the bowls”
Typically accessible:	Year-round (see SEASONAL below)
Wilderness:	None
One-Way Length:	1.9 miles (trailhead to Montgomery Pass)
Beginning / Peak Elevations:	10,009 / 10,990
Gain/Loss/Net Gain:	996/15/+981
Map(s) - Trails Illustrated:	#112 Poudre River Cameron Pass
Map(s) - USGS 7-½' Quadrangles:	Clark Peak



TRAILHEAD LOCATION:

Upper Poudre River Area: Drive 57.4 miles on CO-14 from Ted’s Place to the Zimmerman Lake Trailhead parking lot (at mm 66.3 on the east side of CO-14). It has toilets and ample parking, but no water. The parking area has 2 entrances and should be good for any size stock trailer. The Montgomery Pass trailhead is across the highway (west side) near the lower end of the parking lot

TRAIL: The lower trail, which is densely forested, has a well-established tread that is very easy to follow. The lower half of the trail is also marked by small blue diamond-shaped ski trail signs high in the trees. The trail above timberline is well-worn and easy to follow and the path is marked by a few medium-sized rock cairns.

WATER: **Abundant** The lower trail parallels Montgomery Creek for about 0.5 mile (the creek is about 75 ft east of the trail at GPS N40°32.70’ W105°53.08’). The highest place to get water is at GPS N40°32.55’ W105°54.14’, just before the trail leaves the forest and enters the alpine, although this source may be only a trickle late in the season.

CAMPING: There are several potential camping locations in and near the tree-line at the upper end of the trail (but you need to bring water and the sites are pretty exposed).

SEASONAL: The parking area is usually accessible in winter, but be prepared for high elevation winter driving. Snowshoes or skis are needed.

DESCRIPTION: This is a popular trail, because it is short and you can get above timberline quickly. The trail begins in multi-use National Forest. It leaves the Roosevelt National Forest and goes into the Colorado State Forest after a short but steep 1.3 mile hike through a subalpine area supporting large Douglas-fir and Engelmann spruce trees. Wildflowers put on a tremendous display immediately after snow melt and continue through most of the summer. After entering the Colorado State Forest, continue on for another 0.5 mile to Montgomery Pass. A weathered sign at this location marks the end of this trail. The views are spectacular from here in all directions; North Park fans out to the west and you have great views of the Neota Wilderness to the east and southeast. An unofficial path leads northwest along the ridge to a radio tower. This path offers additional beautiful views.

Mileages shown are approximate.

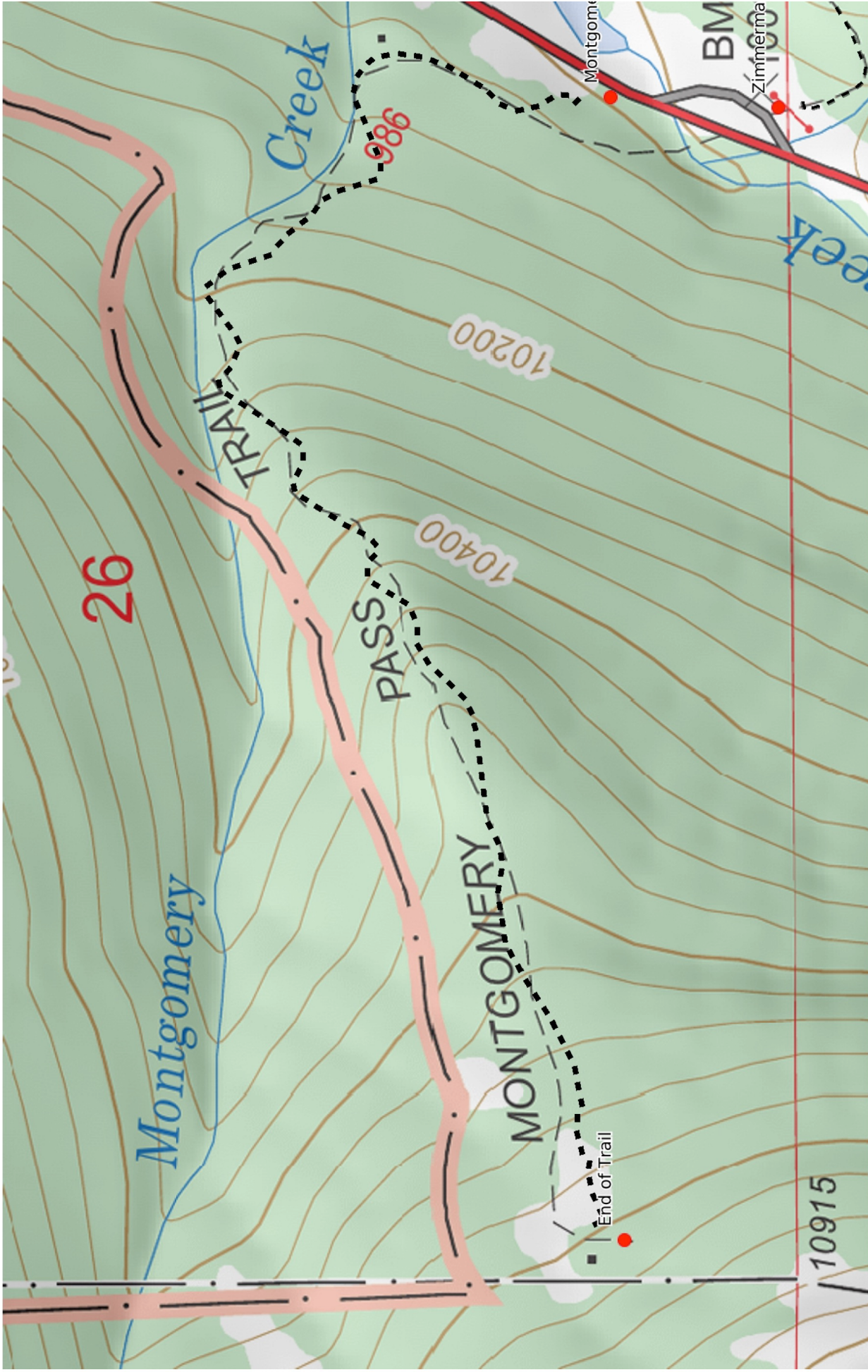
INFORMATION OF INTEREST: The trail follows an old jeep road that was used to access North Park before the road over Cameron Pass was built. You will notice the remains of an old log cabin on the way up, at the Colorado State Forest boundary (unmarked). Tom Montgomery, a well-known resident of Larimer County, may have built the cabin around 1900. The upper third of this trail is within the Colorado State Forest.

REGULATIONS:

- Camping and Fires – Prohibited within 200 feet of trailhead. Recommend at least 100 feet from water and trail.
- Dogs – Must be under voice control at all times.
- Stock – To avoid spreading noxious weeds, recommend beginning 72 hours prior to the ride, stock should be fed only pellets or certified weed-free hay. Required: throughout the trip, any feed *must* be pellets or certified weed-free hay.
- Bicycles and Other Wheeled Conveyances – Prohibited.
- Motorized Transport – Prohibited.
- Group Size – More than 74 people in a single group must have a USFS permit.

Mile	GPS Coordinates: datum = WGS84	Lat/Long	UTM
	parking lot (on CO-14)	N40°32.40' W105°52.93'	425 ²⁹⁴ mE 4488 ⁰⁶⁸ mN
0	Montgomery Pass Trailhead (on CO-14)	N40°32.44' W105°52.94'	425 ²⁸¹ mE 4488 ¹⁴² mN
1.35	junction with "The Bowls Trail" (a ski trail) & Montgomery	N40°32.44' W105°53.89'	423 ⁹⁴⁰ mE 4488 ¹⁵⁶ mN
1.9	end of patrol at Montgomery Pass/Colorado State Forest	N40°32.56' W105°54.40'	423 ²²² m 4488 ³⁸⁵ mN

(See next page for map of trail).



Mercator Projection
WGS84
USNG Zone 13TDE
CalTopo

