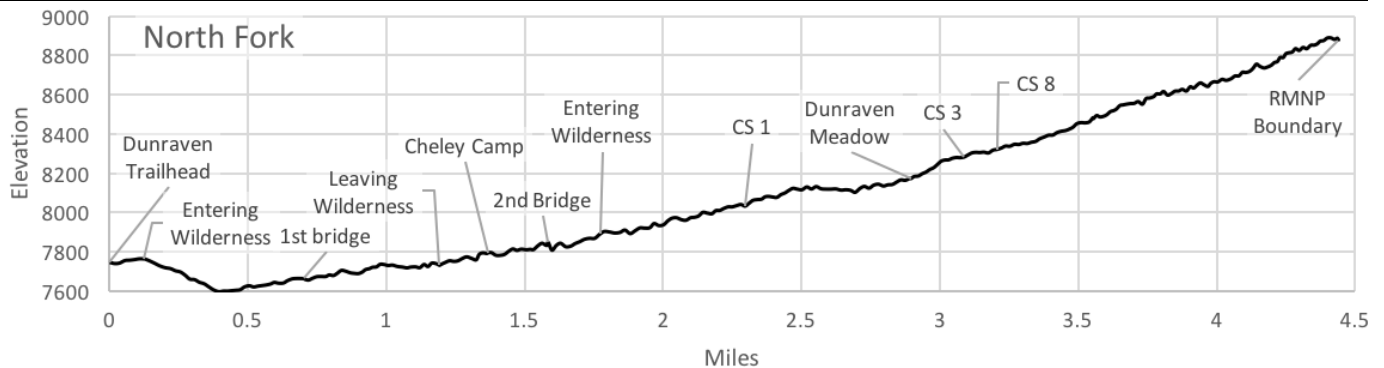


May, 23 2022

Public Trail Information: North Fork

Trail(s): North Fork #929	
Ratings / restrictions:	Hikers – Moderate Stock –Difficult Dogs must be on hand-held leash with hikers See complete REGULATIONS below INFORMATION OF INTEREST
Cautions:	Burn area
Typically accessible:	Year-round
Wilderness:	Comanche Peak
One-Way Length:	4.4 miles (Dunraven Trailhead to RMNP boundary)
Elevation start / peak:	7,868 / 8,961
Gain/Loss/Net Gain:	1,296/215/+1,081
Map(s) - Trails Illustrated:	#101 Cache La Poudre Big Thompson (& #200 RMNP)
Map(s) - USGS 7-½' Quadrangles:	Glen Haven, Estes Park



TRAILHEAD LOCATION:

Big Thompson & Estes Park Area: From the Dam Store at the mouth of the Big Thompson Canyon, drive up US-34 for 7.7 miles to Drake. Turn right onto Devils Gulch Road (CR-43). After driving 6.1 miles, turn right onto Dunraven Glade (CR-518; a gravel road), which crosses a bridge over the North Fork of the Big Thompson River. Continue on it for 2.2 miles to the parking area. The Dunraven Trailhead and the beginning of the North Fork Trail will be on the south (your left).

Toilets are available at the Dunraven Trailhead parking lot. This large parking area has space for several stock trailers, but the trail tends to be busy so an early arrival is recommended. No water at the trailhead.

CAUTIONS: This trail was in the Cameron Peak Fire of 2020, the largest fire in Colorado history, which burned nearly 209,000 acres. It has minor areas that are burned but most of the trail is still green and the trail is in good shape.

Cautions in Burn Areas:

- Falling Trees
 - Tree root systems can be burned—compromised or non-existent. Thus, trees in burned areas fall at a high rate for some time after a fire.
 - There may be a large number of trees on the trail.

- Stump Holes –Tree stumps sometimes burn below ground level and can leave dangerous holes, often filled in loosely by ash or needles.
- Difficult to Follow Trails
 - At times the trail can be difficult or impossible to follow with no vegetation or tread visible.
 - Even in formerly familiar terrain, the landscape can be disorienting.
- Rock slides are more likely, due to lack of vegetation and root damage.
- Flash Flooding is likely even with small rainstorms and may occur way downstream from rain.

WATER: Abundant and readily accessible in the first half of the trail. After that, the trail veers away from the river, so access is less easy. The trail does cross two small tributaries where water is available seasonally.

CAMPING: One can find good campsites that meet Leave No Trace guidelines and U.S. Forest Service regulations just past the Dunraven Meadow, starting at about 3 miles, either uphill or downhill from the trail. See REGULATIONS below.

SEASONAL: Normally accessible in winter, as the road to the trailhead is usually plowed. Snowshoes or skis are often needed.

DESCRIPTION: This is one of the three highest-use trails in the Canyon Lakes Ranger District.

The North Fork Trail drops abruptly into the North Fork canyon from the southwest side of the parking lot and follows the river upstream, entering the Comanche Peak Wilderness at 0.1 mile. After 1 mile the trail leaves the Wilderness and North Fork Travel Zone and passes through private land (Cheley Camp, a youth summer camp) on an easement for about 0.6 mile. Stay on the trail through this stretch of private land.

Shortly after re-entering the Wilderness and the North Fork Travel Zone the trail leaves the stream channel and traverses the hillside north of the North Fork. The trail skirts north and above the large, open Dunraven Meadow from 2.6 to 3 miles above the trailhead. Just at the east end of the meadow is a well-used unofficial trail that leads to the remains of the Mateland family shack.

Stock riders and backpackers heading into RMNP use this trail heavily. Popular destinations in the Park

include Lost Falls (7.4 mi from the trailhead) and Lost Lake (9.7 mi from the trailhead).

In the Wilderness, maximum group size is 12 heartbeats except for outfitted groups (such as Cheley Camp) that have an outfitter permit allowing 18 heartbeats per group.

All mileages shown are approximate.

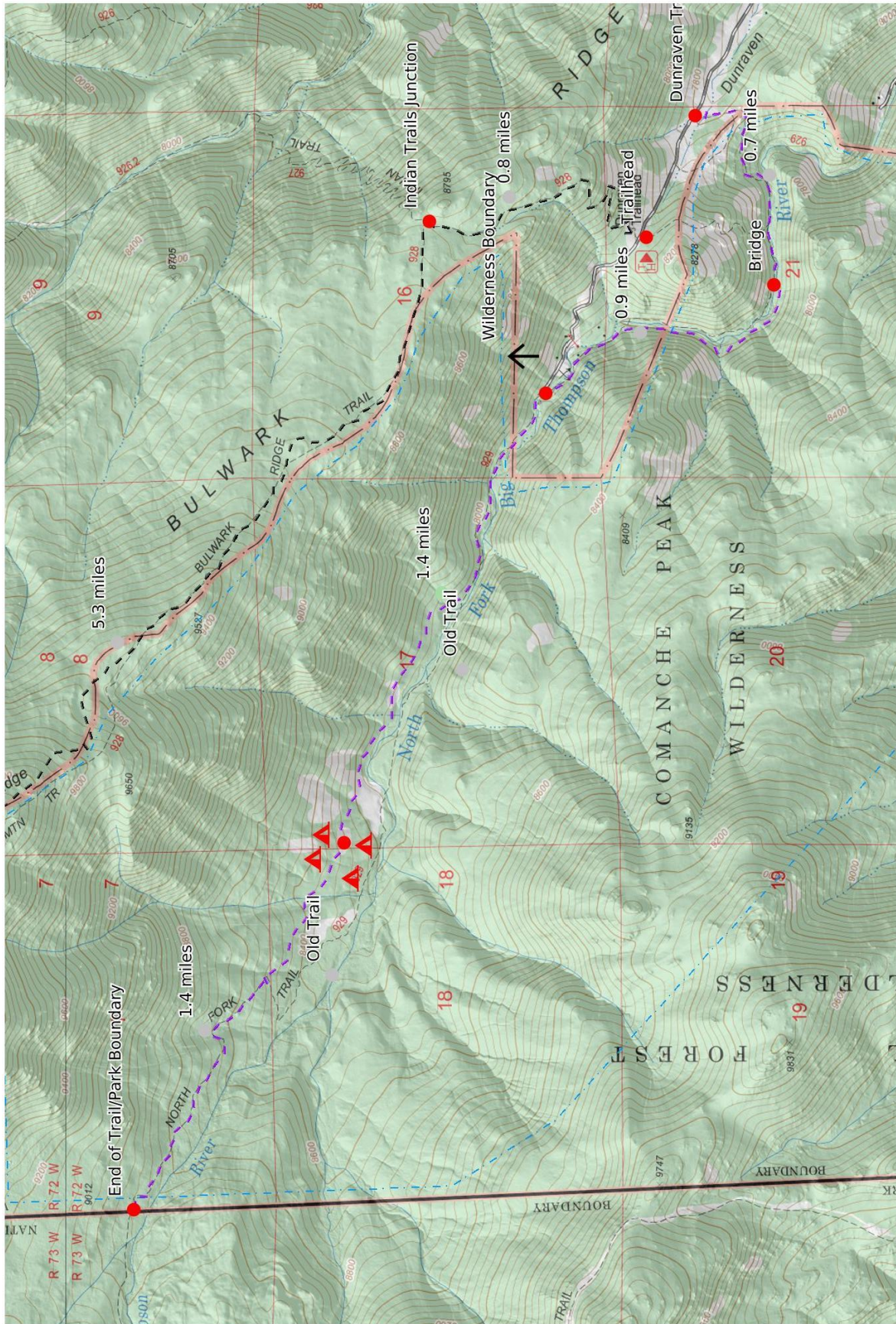
INFORMATION OF INTEREST: The remains of the old Mateland family line shack are located 2.9 miles from the trailhead. They are right by the North Fork at the western end of the meadow south and downhill from the trail. The flood of 2013 washed part of this structure into the river. Although no visible signs remain, this was also the location of a resort camp called Deserted Village, built of stick architecture in the 1890s by Fred Sprague. In 1913, the Mateland family bought the land from Sprague and ran cattle and sheep on the property. The demise of Deserted Village is left to your imagination.

REGULATIONS:

- Camping and Fires - Prohibited within 200 feet of trailhead and parking area. In the Travel Zone/Wilderness: prohibited within 200 feet of trail or water; no wood fires; self-contained chemical stoves only.
- Dogs - Must be on hand-held leash with hikers; voice control with stock.
- Stock - To avoid spreading noxious weeds, recommend beginning 72 hours prior to the ride, stock should be fed only pellets or certified weed-free hay. Required: throughout the trip, stock *must* be fed only pellets or certified weed-free hay. Overnight stock prohibited.
- Bicycles and Other Wheeled Conveyances - Prohibited.
- Motorized Transport & Equipment - Prohibited.
- Group Size - Maximum 12 people and stock, combined.

Trail Adopted by: Poudre Wilderness Volunteers

Mileage	GPS Coordinates: datum = WGS84	Lat/Long	UTM
0	Dunraven Trailhead	N40°28.53' W105°27.63'	460 ⁹⁶⁵ mE 4480 ⁶³⁷ mN
0.7	Bridge 1 (below Cheley Camp)	N40°28.34' W105°28.13'	460 ²⁵⁷ mE 4480 ²⁸⁹ mN
1.6	Bridge 2 (above Cheley Camp)	N40°28.88' W105°28.46'	459 ⁷⁹⁶ mE 4481 ²⁹⁰ mN
2.9	Mateland shack (SW corner of meadow)	N40°29.25' W105°29.80'	457 ⁹⁰⁷ mE 4481 ⁹⁸⁵ mN
4.4	RMNP boundary	N40°29.85' W105°30.97'	456 ²⁶¹ mE 4483 ¹⁰⁵ mN



Mercator Projection
 WGS84
 UTM Zone 13T


Scale **1:22465** 1 inch = 1872 feet

4 km
 2.0 mi

 MN
 8.2°


North Fork: 3