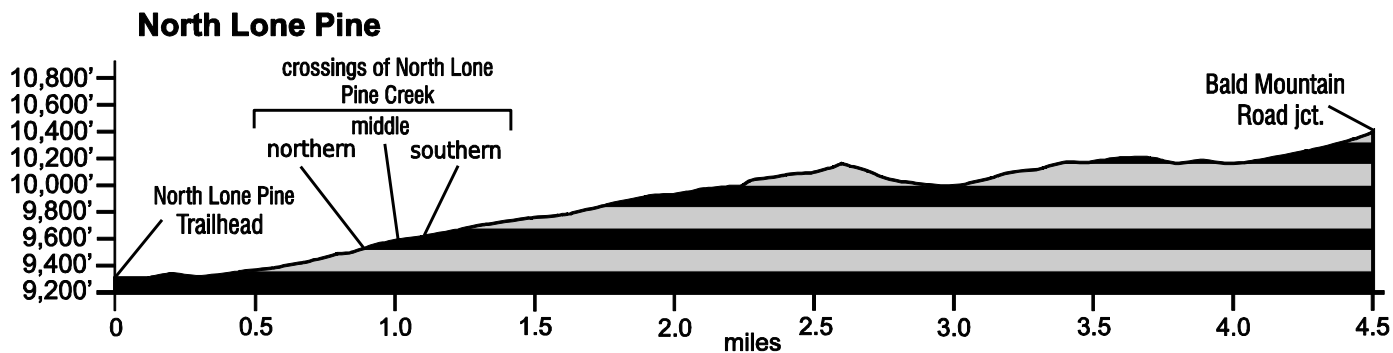


Jan. 21, 2021

**Public Trail Information: North Lone Pine**

Trail(s): North Lone Pine #953	
Ratings / restrictions:	Hikers – Moderate Stock riders – Moderate Bicycles allowed See complete REGULATIONS below DESCRIPTION
Cautions:	Bicycles may be on trail
Typically accessible:	Mid-June, after Dead Man Road is open
Wilderness:	None
One-Way Length:	4.5 miles (trailhead to junction with Bald Mountain Road FDR-517)
Beginning / Peak Elevations:	9,348 / 10,689
Gain/Loss/Net Gain:	1,608/267/+1,341
Map(s) - Trails Illustrated:	#111 Red Feather Lakes Glendevey
Map(s) - USGS 7-½' Quadrangles:	South Bald Mountain



**TRAILHEAD LOCATION:**

Red Feather Lakes Area: From Ted's Place, drive north on US-287 for 10.5 miles to "The Forks" at Livermore, turn left and drive up the Red Feather Lakes Road (CR-74E) close to the community of Red Feather Lakes. Just after passing the Pot Belly Restaurant, turn left onto Deadman Road (CR-86). Follow Deadman Road to the trailhead, located on a ridge to your left (south), 2 miles after passing a Forest Service gate and an emergency call box. Total distance from "The Forks" to the trailhead is 28.5 miles. (NOTE: Deadman Road is closed in winter.)

Toilets are available at the North Fork Poudre Campground, when open, just beyond the Killpecker trailhead, about 2.5 miles further up the road, and along CR-74E at the Mt. Margaret and Lady Moon trailheads. Limited stock trailer parking is available at the North Lone Pine Trailhead, but ample parking for stock trailers is available across the road from the trailhead, or ¼ mile farther on Deadman Road at the FR 300 junction. No water available at trailhead.

The upper third of this trail has somewhat poor (rocky) footing for stock, and you may encounter motorcycles or ATVs illegally on this trail. Note that mountain bikes are allowed on this trail.

**TRAIL:** The tread is well-worn and easily followed in most sections. The path of the trail is heavily marked with old USFS axe blazes in trees. There are also

numerous small to medium rock cairns (6-18 in) along much of the trail's path, as well as down trees lying along the sides of portions of the trail. There are also a few small metal galvanized/orange painted "953" trail reassurance markers in trees along the trail.

**WATER: Limited** - The lower 1.25 miles of the trail closely follows North Lone Pine Creek (making three crossings) so water is readily available along this portion of the trail. The southern 3+ miles of the trail has little or no water.

**CAMPING:** There are several suitable camping locations along this trail (particularly along the northern half of the trail).

**SEASONAL:** Deadman Road (CR-86) is closed in winter, so the trailhead is not accessible.

**DESCRIPTION:** The North Lone Pine Trail is a relatively narrow, pleasant, and mostly shady trail.

The first part of the trail is relatively level. It passes through a predominantly lodgepole pine forest, and goes by an abandoned Forest Service experiment shed. Caution: The ground around the shed is covered with loose barbed wire which should be avoided, and the shed is in disrepair and should not be entered. When the trail reaches North Lone Pine Creek, it continues climbing along the creek, making three stream crossings, after which the trail steepens. Further up the hill, the trail crosses an old logging

road twice. The first crossing is marked with cairns, and the second is marked by trail signs indicating the path. Much of the trail above this point is rocky, with poor footing for stock. The trail then comes to the first of three granite outcroppings. Here the trail is marked by cairns for a short distance.

A portion of the upper trail passes through a somewhat boggy area that has many water-loving wildflowers. It then continues to the southwest, passing through a dry, open, mixed forest consisting of lodgepole pine and Engelmann spruce with a dense cover of grouseberry plants covering the ground to the east and north of Middle Bald Mountain. The trail

ends at Bald Mountain Road just south of Middle Bald Mountain. There is a small galvanized metal/orange painted "953" sign posted on a tree at the end. All that is left of a carsonite wand sign with trail regulations is the wand.

You may want to turn right (NW) on Bald Mountain Road and go a short distance to the Killpecker Trail which takes you to the base of the Middle Bald Mountain. It is an easy climb to the top of Middle Bald Mountain, which offers spectacular views.

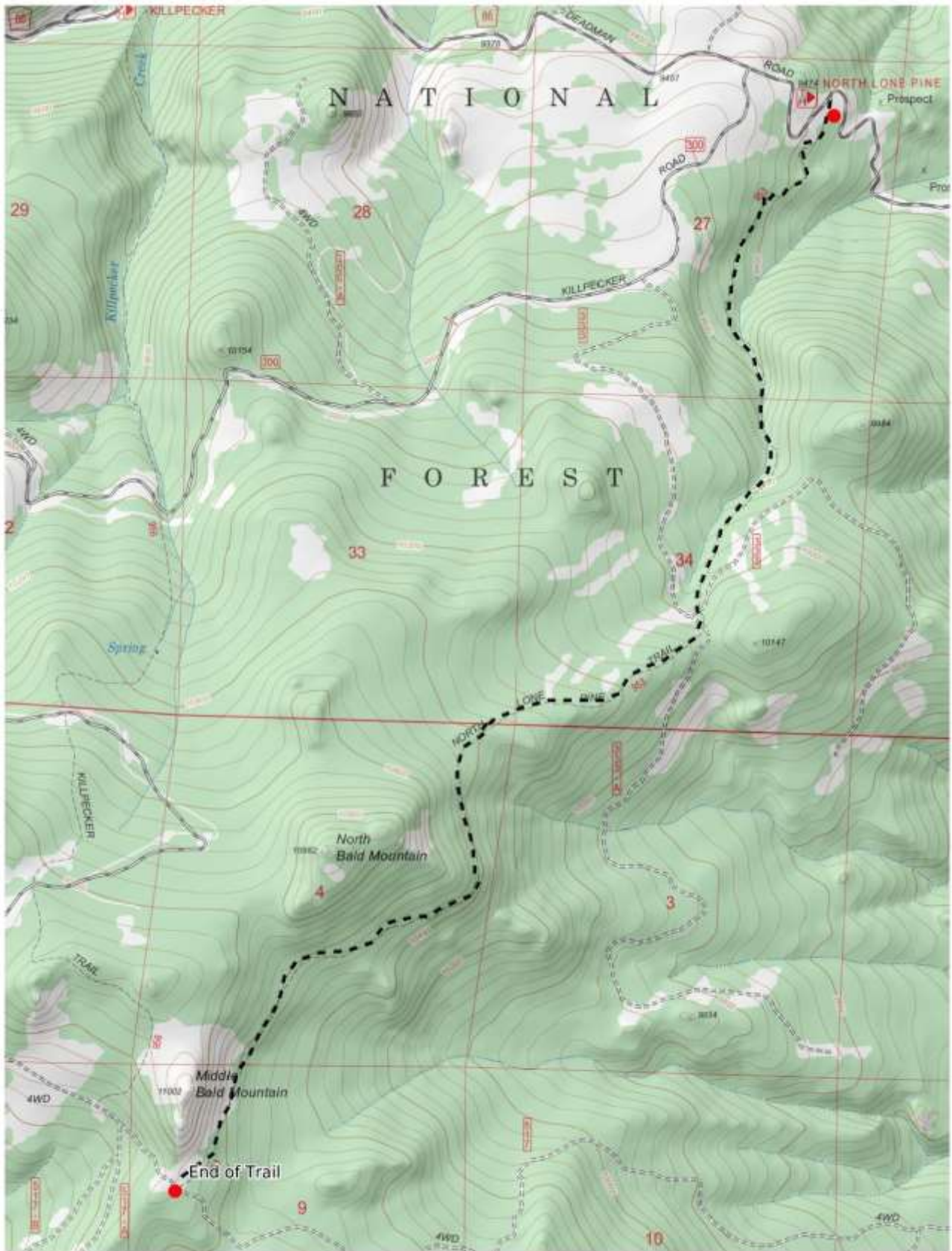
All mileages shown are approximate.

**REGULATIONS:**

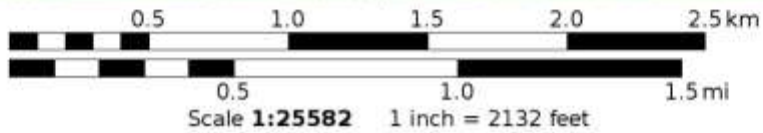
- Camping and Fires – Recommend at least 100 feet from water and trail; prohibited within 200 feet of trailhead and parking area.
- Dogs – Must be under voice control at all times.
- Stock – To avoid spreading noxious weeds, recommend beginning 72 hours prior to the ride, stock should be fed only pellets or certified weed-free hay. Required: throughout the trip, stock *must* be fed only pellets or certified weed-free hay.
- Bicycles and Other Wheeled Conveyances – Allowed.
- Motorized Transport – Prohibited.
- Group size - Any single group of more than 74 people must have a USFS permit.

Mileage	GPS Coordinates: datum = WGS84	Lat/Long	UTM
0	trailhead (on Deadman Road; CR-86)	N40°48.50' W105°40.23'	443446mE 4517696mN
0.8	old screened USFS experimental shed	N40°47.91' W105°40.58'	442946mE 4516609mN
0.9	northern crossing of North Lone Pine Creek	N40°47.88' W105°40.54'	443002mE 4516553mN
1.1	middle crossing of North Lone Pine Creek	N40°47.78' W105°40.46'	443113mE 4516367mN
1.2	southern crossing of North Lone Pine Creek	N40°47.71' W105°40.48'	443084mE 4516237mN
1.8	first road crossing	N40°47.19' W105°40.68'	
1.9	second road crossing	N40°47.13' W105°40.67'	
4.5	end of trail at Bald Mountain Road (FDR-517)	N40°45.67' W105°42.41'	440339mE 4512485mN

**(See next page for trail map.)**



Mercator Projection  
 WGS84  
 USNG Zone 13TDF  
 CalTopo



North Lone Pine: 3