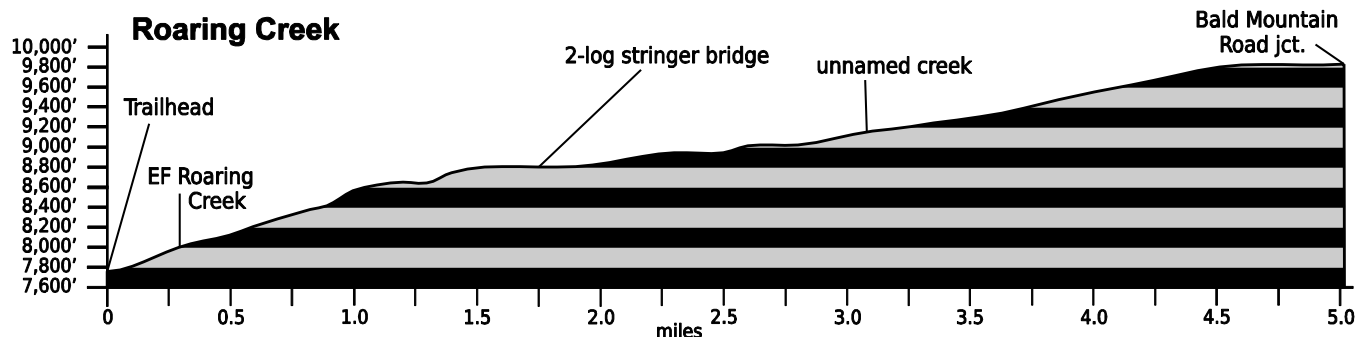


Jan. 8, 2024

PWV Patrol Description: Roaring Creek

Trail(s): Roaring Creek #952	
Ratings / restrictions:	Hikers – Moderate Stock riders – Not Recommended Bicycles - Allowed See complete REGULATIONS below DESCRIPTION
Cautions:	Moose Bicycles may be on trail
Typically accessible:	Year-round (see SEASONAL below)
Approved Communication Device:	REQUIRED (Radio: 01 or 03)
Wilderness:	None
One-Way Length:	5.0 miles (trailhead to intersection with Bald Mountain Road)
Beginning / Peak Elevations:	7,738 / 9,821
Gain/Loss/Net Gain:	2,141/58/+2,083
Map(s) - Trails Illustrated:	#112 Poudre River, Cameron Pass; #111 Red Feather Lakes
Map(s) - USGS 7-1/2' Quadrangles:	Boston Peak, Kiniklinik, Deadman



TRAILHEAD LOCATION:

Upper Poudre River Area: Drive 40.5 miles on CO-14 from Ted’s Place to mm 82.1. The parking lot is on the north (right) side of the highway, 1.5 miles past the Colorado Parks and Wildlife fish hatchery.

Toilets are located at the Big Bend Campground approximately 1 mile before reaching the trailhead.

Stock Riders: The first 0.7 mile is quite steep and rocky with several tight switchbacks. Stock patrolling NOT recommended.

TRAIL: This trail climbs some 5 miles from the Poudre Canyon along Roaring Creek. The headwaters of Roaring Creek are located just east of the Nunn Creek Basin. Bighorn sheep can sometimes be seen browsing in the trailhead area.

WATER: Abundant - The trail follows Roaring Creek closely for virtually its entire length, so water is abundant and readily available.

CAMPING: There are few good camping locations along the trail.

SEASONAL: Accessible in the winter. Having high sun exposure, the parking lot is usually clear, though not plowed. Boot traction devices are usually needed the first 1.25 miles. Snowshoes are usually needed after the first 1.25 miles. It is easy to lose this trail after the

first 1.25 miles when snow-covered. This trail tends to hold snow in the winter. Skis are not recommended.

The unbridged crossing of an unnamed creek (at 3.06 miles above the trailhead) can be challenging during high stream flows, even if you are prepared to wade.

DESCRIPTION: The trail travels north, crossing a bridge over the East Fork Roaring Creek about 0.3 mile from the trailhead. It then climbs steeply, making several sharp switchbacks through Oregon grape, sagebrush and Rocky Mountain juniper. The trail continues to climb through an open forest of large ponderosa pine, Douglas-fir, and quaking aspen.

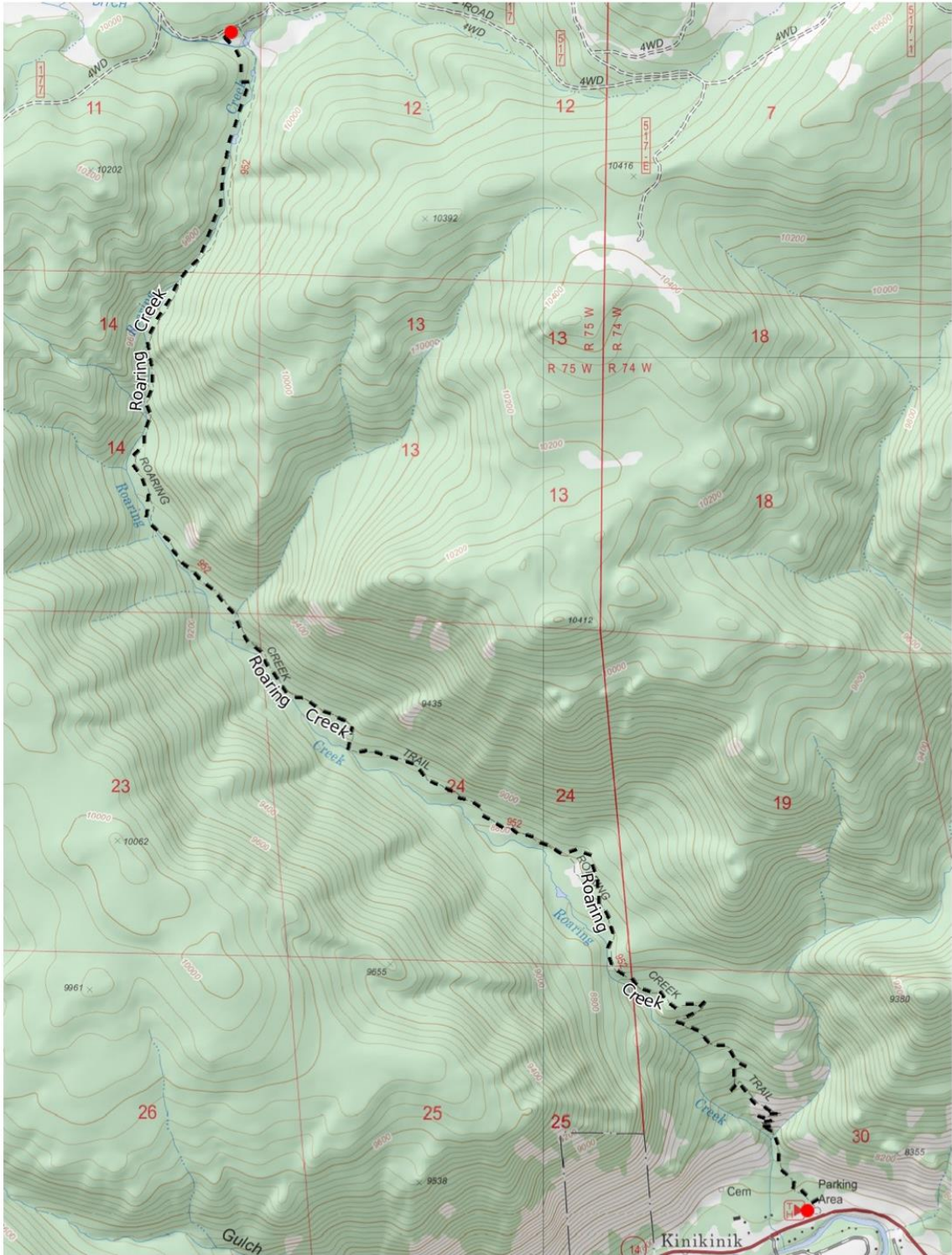
About 1.2 miles above the trailhead, the trail levels out on a bench and begins its transit of a dense lodgepole pine forest. The trail from this point meanders along the northeast side of Roaring Creek. The trail crosses two creeks; the first is via a short 2-log stringer bridge, but the second crossing (at 3.06 miles from the trailhead) is unbridged and can be challenging during high runoff. The trail eventually skirts some meadows (which can be very wet and muddy in the spring) before ending at the Bald Mountain Road (FDR-517), a 4-wheel drive road. Look for moose and elk along the upper portion of the trail. The creek is inhabited by native greenback cutthroat trout. This trail is popular with day hikers and backpackers.

REGULATIONS:

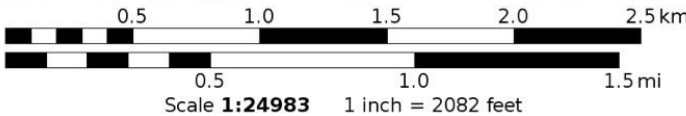
- Camping and Fires – Prohibited within ¼ mile of trailhead. Recommend at least 100 feet from water and trail.
- Dogs – Must be under voice control at all times.
- Stock – To avoid spreading noxious weeds, recommend beginning 72 hours prior to the ride stock feed should only be pellets or certified weed free hay. Required: throughout the trip, any feed *must* be pellets or certified weed-free hay.
- Bicycles and Other Wheeled Conveyances – Allowed.
- Motorized Transport – Prohibited.
- Group Size – More than 74 people in a single group must have a USFS permit.

Mileage	GPS Coordinates: datum = WGS84	Lat/Long	UTM	
0	trailhead (on CO-14)	N40°42.85' W105°44.10'	437918mE	4507287mN
0.3	timber bridge across EF Roaring Creek	N40°43.03' W105°44.22'	437752mE	4507621mN
1.8	short 2-log stringer bridge	N40°43.75' W105°44.87'	436849mE	4508961mN

(See next page for map of trail.)



Mercator Projection
 WGS84
 USNG Zone 13TDF
 CalTopo



Roaring Creek: 3