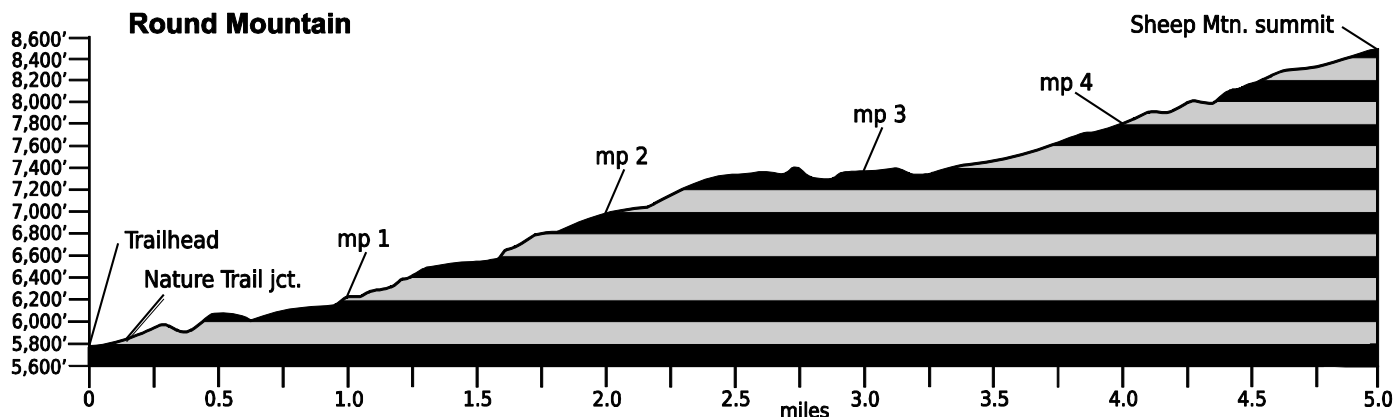


Jan. 31, 2021

Public Trail Information: Round Mountain

Trail(s): Round Mountain #969 (#831)	
Ratings / restrictions:	Hikers –Moderate Stock riders – Not recommended Dogs on hand-held leash with hikers Bicycles allowed See complete REGULATIONS below DESCRIPTION
Cautions:	Rattlesnakes Bicycles may be on trail
Typically accessible:	Year-round (see SEASONAL below)
Wilderness:	None
One-Way Length:	4.7 miles (trailhead to summit of Sheep Mountain)
Beginning / Peak Elevations:	5,777 / 8,450
Gain/Loss/Net Gain:	2,673/0/+2,673
Map(s) - Trails Illustrated:	#101 Cache La Poudre, Big Thompson
Map(s) - USGS 7-1/2' Quadrangles:	Drake



TRAILHEAD LOCATION:

Big Thompson & Estes Park Area: From the Dam Store at the mouth of the Big Thompson Canyon, drive 4 miles up US-34. Viestenz-Smith Mountain Park will be on the north (your right). Directly across the highway on the south (your left), a short gravel road will take you to the Round Mountain trailhead and parking lot. Toilets are located in the parking lot but there is no water.

Stock riders: Riding is not recommended. It is difficult to park and turn trailers around in the parking lot. The drop-off along the lower section of this trail is very steep.

TRAIL: Because of its location, this trail offers year-round hiking and is heavily used. The trailhead and the first 0.7 mile of the trail are on land owned by the City of Loveland. Don't go off trail or camp on non-USFS lands. The trail is well-worn and easy to follow.

WATER: NONE

CAMPING:

SEASONAL: Normally accessible in winter. Usually boot traction devices are adequate for the first 3.5 miles; then snowshoes are needed. At times, snowshoes may be needed for the entire trail. The

first part of the trail is steep with steep side slopes, so boot traction devices are highly recommended. This trail typically holds snow.

DESCRIPTION: From the trailhead the trail follows an old road heading uphill and above the Big Thompson River. After about 0.25 mile, the main trail to Sheep Mountain (the Round Mountain Trail) heads to the south (left) while the Loveland Nature Trail heads to the west (right) for about 1 mile. The Round Mountain Trail offers great views of the Big Thompson Canyon.

The Round Mountain National Recreation Trail (which is an interpretive trail) climbs to the east, then turns steeply uphill to the southwest. There are at least 12 interpretive signs and 4 milepost signs along this trail. After about 2 miles the trail levels out somewhat, and traverses the right side of a canyon, passing through some interesting rock formations. From here the trail loses some elevation until it crosses a draw. After crossing the draw the trail climbs steeply through sparse ponderosa pine to the top of Sheep Mountain. From near the summit, snow-capped peaks can be seen to the west and the plains to the east.

REGULATIONS:

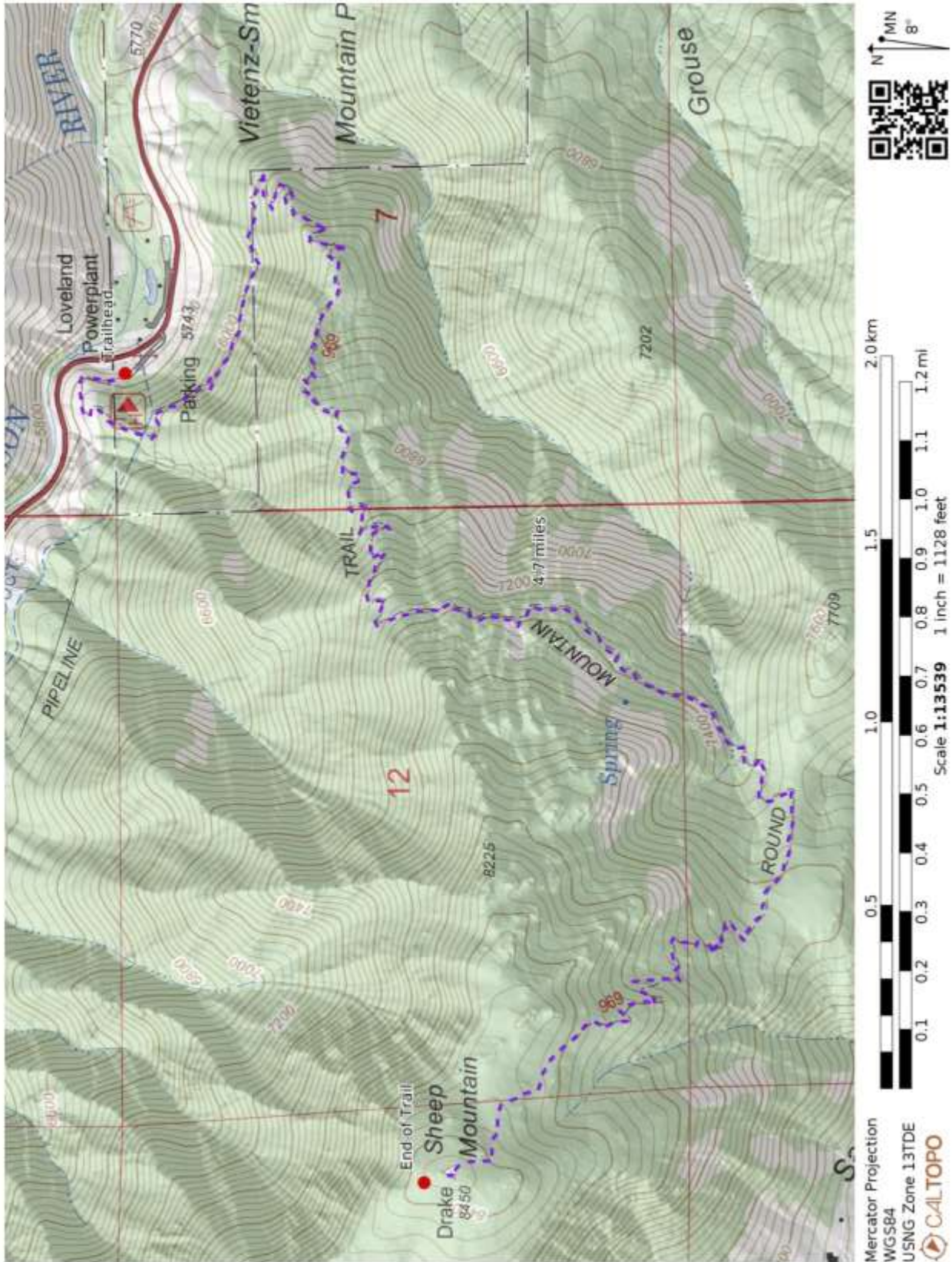
- Camping and Fires - Prohibited within 200 feet of trailhead; recommend at least 100 feet from water and trail.
- Dogs - Must be on hand-held leash with hikers; voice control with stock.
- Stock - To avoid spreading noxious weeds, recommend beginning 72 hours prior to the ride, stock should be fed only pellets or certified weed-free hay. Required: throughout the trip, stock *must* be fed only pellets or certified weed-free hay.
- Bicycles and Other Wheeled Conveyances - Allowed.
- Motorized Transport - Prohibited.
- Group Size – A single group of more than 74 people must have a USFS permit.

Round Mountain is a National Recreation Trail. The lower part of the trail is on property owned by the City of Loveland.

Trail Adopted by: Loveland Mountain Club

GPS Coordinates: datum = WGS84	Lat/Long	UTM
Round Mountain Trailhead (on US-34)	N40°25.21' W105°17.12'	475793mE 4474432mN
junction with Nature Trail	N40°25.27' W105°17.19'	475695mE 4474543mN
National Forest boundary	N40°25.03' W105°16.83'	476202mE 4474098mN
milepost-1	N40°24.97' W105°16.75'	476315mE 4473986mN
milepost-2	N40°24.83' W105°17.40'	475395mE 4473730mN
milepost-3	N40°24.41' W105°17.73'	474926mE 4472955mN
milepost-4	N40°24.40' W105°18.28'	474148mE 4472939mN
end of patrol at Sheep Mtn. summit	N40°24.74' W105°18.66'	473613mE 4473570mN

(See next page for map of trail.)



Round Mountain: 3