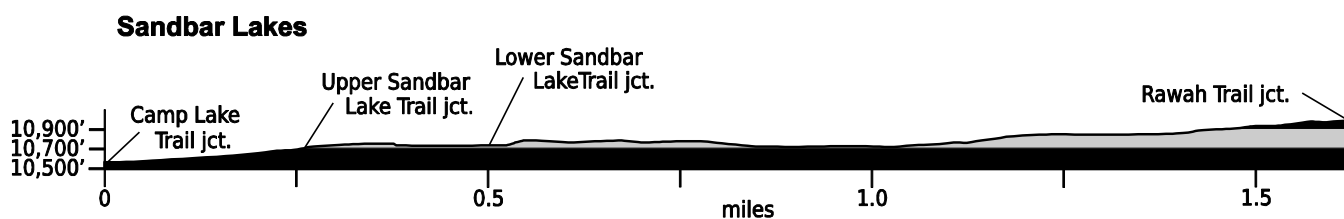


Jan. 31, 2021

## Public Trail Information: Sandbar Lakes

Trail(s): Sandbar Lakes #972; Upper Sandbar Lake #972-1; Lower Sandbar Lake #972-2	
Ratings / restrictions:	Hikers – Easy    Stock riders – Moderate    No wood fires above 10,800 feet Dogs must be on hand-held leash with hikers See complete REGULATIONS below DESCRIPTION
Cautions:	Moose
Typically accessible:	Late June, after Laramie River Road is open
Wilderness:	Rawah
One-Way Length:	TOTAL = 2.25 miles (for all trails in this patrol - from Camp Lake Trail junction to Rawah (N) Trail junction); Sandbar Lakes Trail (#972) = 1.25 miles; Upper Sandbar Trail (#972-1) = 0.76 mile; Lower Sandbar Lake Trail (#972-2) = 0.24 mile
Beginning / Peak Elevations:	10,550 [jct. with Camp Lake Trail] / 11,150 [jct. with Rawah (N) Trail east of Rawah Lake #3]
Gain/Loss/Net Gain:	548/134/+414
Map(s) - Trails Illustrated:	#112 Poudre River, Cameron Pass; Mountain Jay, Rawah Wilderness
Map(s) - USGS 7-½' Quadrangles:	Rawah Lakes



### TRAIL LOCATION:

**Rawah Wilderness Area:** The Sandbar Lakes Trail is typically accessed via the Camp Lake Trail or Rawah (North) Trail. See the Camp Lake and Rawah (North) trail descriptions for details.

**TRAIL:** These trails have well-worn tread and are relatively easy to follow (nearly all trail junctions are clearly marked with wooden trail signs).

**WATER: Abundant** - Sources include: Big Rainbow Lake, Upper Sandbar Lake, an unnamed pond, and Lower Sandbar Lake.

**CAMPING:** Finding a suitable and legal campsite 200+ ft from water and trails is challenging along these trails. One good area is above and back in the trees west of Big Rainbow Lake (approx. GPS N40°41.55' W105°56.62'). Note: people are frequently camped in the trees south of Big Rainbow Lake and that area is too close to the trail!

**SEASONAL:** Laramie River Road is not plowed in winter, so the trailhead is inaccessible.

**DESCRIPTION:** One end of this short trail network begins near the western end of the Camp Lake Trail. The other end begins along the Rawah Trail (N) east-northeast of Rawah Lake #3. If you begin your patrol at the junction of the Sandbar Lakes and Camp Lake

trails, you will climb above and to the southwest of the swampy area at the junction. After 0.3 mile, the trail splits. The right fork (Sandbar Lakes Trail #972) continues southwest, passing between the Upper and Lower Sandbar lakes and eventually meets the Rawah Trail (N) east of Rawah Lake #3. The left fork (Upper Sandbar Lake Trail #972-1) takes you south to the upper end of Big Rainbow Lake and then swings around to the north-northwest, drops down slightly, and proceeds along the eastern edge of Upper Sandbar Lake to the north-northwest, eventually passing to the west of a small unnamed pond.

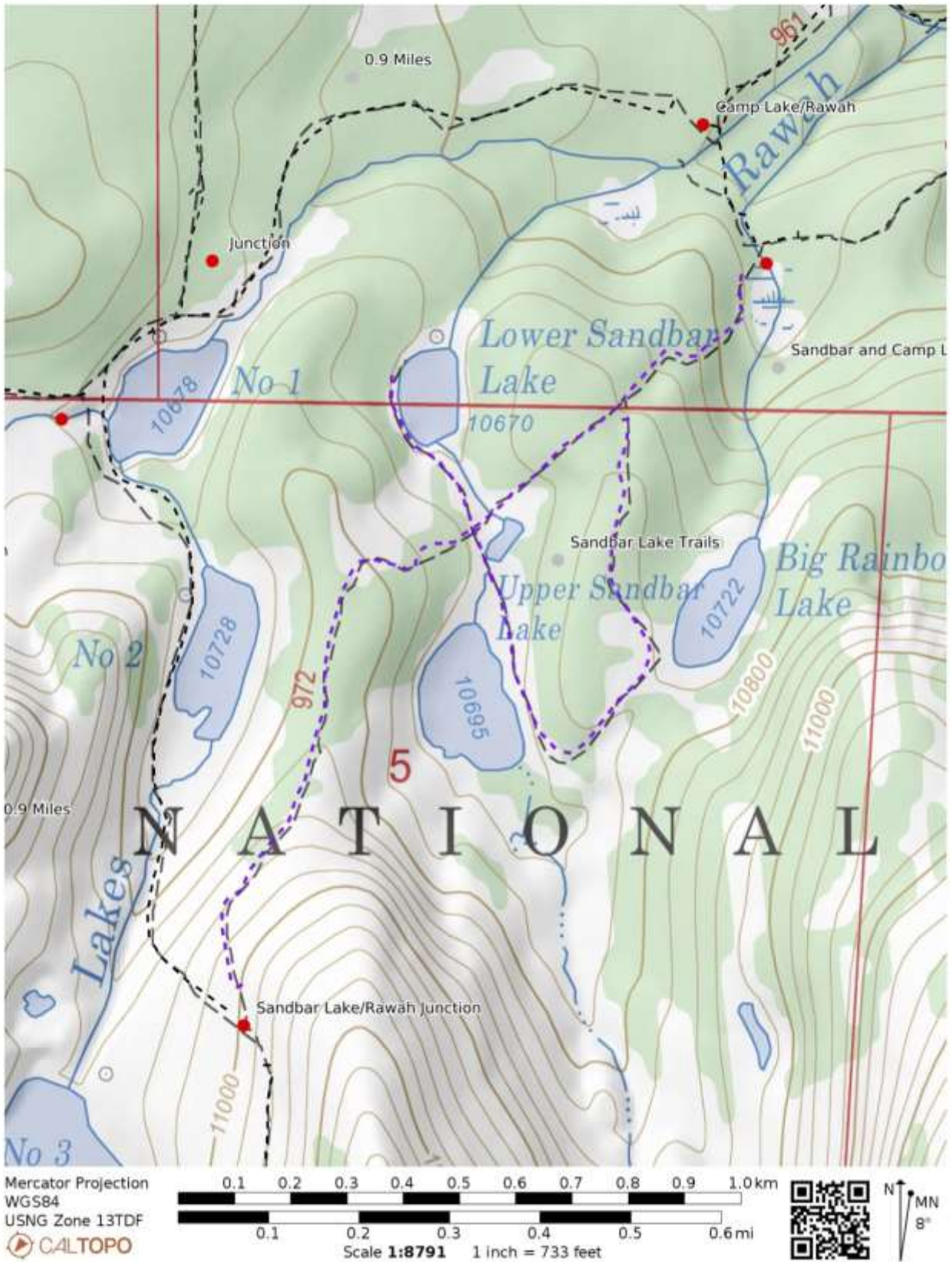
Just beyond this pond there is a 4-way intersection of trails (see map below). The trail leading to the southwest (#972) climbs for about 0.7 mile until it meets the Rawah Trail (N) on the side of a ridge to the northeast of Rawah Lake #3. The trail that continues to the north-northwest (Lower Sandbar Lake Trail #972-2) goes to Lower Sandbar Lake and skirts the western side of this lake before it dead ends. The branch that goes to the northeast (#972) returns to the Camp Lake Trail. The fourth is the upper leg of trail #972. Moose are commonly seen in and near both Upper and Lower Sandbar lakes and the small unnamed pond between them.

**REGULATIONS:**

- Camping and Fires - Prohibited within 200 feet of water or trail. Wood fires prohibited above 10,800 feet elevation (Rawah Alpine Closure Area).
- Dogs - Must be on hand-held leash with hikers; voice control with stock.
- Stock - To avoid spreading noxious weeds, recommend beginning 72 hours prior to the ride, stock should be fed only pellets or certified weed-free hay. Required: throughout the trip, stock *must* be fed only pellets or certified weed-free hay.
- Bicycles and Other Wheeled Conveyances - Prohibited.
- Motorized Transport and Equipment - Prohibited.
- Group Size - Maximum 12 people and stock, combined.

<b>GPS Coordinates: datum = WGS84</b>	<b>Lat/Long</b>	<b>UTM</b>
"trailhead" at junction of the Sandbar Lakes Trail #972 with Camp Lake Trail	N40°41.92' W105°56.40'	420585mE 4505731mN
junction of the Sandbar Lakes Trail #972 with the Upper Sandbar Lake Trail #972-1	N40°41.78' W105°56.57'	420342mE 4505475mN
upper end of Big Rainbow Lake	N40°41.51' W105°56.50'	420436mE 4504974mN
junction of the Upper Sandbar Lake Trail #972-1 with Lower Sandbar Lake Trail #972-2 and Sandbar Lakes Trail #972	N40°41.66' W105°56.76'	420072mE 4505256mN
end of the Lower Sandbar Lake Trail #972-2	N40°41.82' W105°56.85'	419949mE 4505553mN
end of patrol at junction of the Sandbar Lakes Trail #972 with the Rawah Trail (North) near Rawah Lake #3	N40°41.16' W105°57.03'	419682mE 4504335mN

**(See next page for map of trail.)**



Sandbar Lakes: 3