

Feb. 10, 2021

Public Trail Information: Young Gulch

Trails: Young Gulch #999 (#837)	
Ratings / restrictions:	Hikers – Easy Stock riders – Moderate Bicycles allowed See complete REGULATIONS below INFORMATION OF INTEREST
Cautions:	Rattlesnakes; poison ivy Bicycles may be on trail
Typically accessible:	Year-round (see SEASONAL below)
Wilderness:	None
One-Way Length:	5.3 miles (trailhead to Stove Prairie Road overlook)
Beginning / Peak Elevations:	5,829 / 7,008
Gain/Loss/Net Gain:	1,179/0/+1,179
Map(s) - Trails Illustrated:	#101 Cache La Poudre Big Thompson
Map(s) - USGS 7-½' Quadrangles:	Poudre Park

(Trail rebuilt in 2019: elevation profile not yet available).

TRAILHEAD LOCATION:

Lower Poudre Canyon Area: Drive 13 miles from Ted’s Place, past the Ansel Watrous Campground on the north (right). You will cross a small bridge. At mm 109, there is a short gravel road on the south (left) side of the highway that will take you to the parking lot. The trailhead is located in the southeast corner of the parking lot. Toilets are available at Ansel Watrous Campground.

Stock riders: note that this trail tends to be busy, and the parking lot has limited space, which poses some problems for maneuvering horse trailers, so an early arrival is recommended. Water is not available at the trailhead.

TRAIL: This trail was impacted by the High Park fire in 2012 and then destroyed by a major flood in 2013. Since then, it has been rebuilt. In general, the trail climbs gently alongside the creek. The new trail is easy to follow and is in good condition. Be prepared, however, for wet feet on some of the creek crossings. Horses are not recommended past the seventh creek crossing at “Picnic Rock”, 1.7 miles from the trailhead.

WATER: Abundant; there are many good locations for water along the trail.

CAMPING: There are few good camping locations anywhere along the trail. All camping is prohibited within ¼ mile of the trail for the first 1.7 miles.

SEASONAL: This trail is accessible all year. During snow season, the trail tends to hold snow and ice. In the early spring, some of the lower creek crossings may be impassable due to high water.

REGULATIONS:

- Camping and Fires - Prohibited within 1/4 mile of trailhead. Prohibited within 1/4 mile of the trail for the first 1.7 miles. Above that, recommend at least 100 feet from water and trail.

DESCRIPTION: This is a very popular trail. The reroute still follows the creek most of the way but is now higher above the creek. The trail was designed to be bike friendly. Much of the trail passes through areas that were burned during the High Park Fire in 2012, making those sections hot on a sunny summer day. The most heavily burned area runs from about mile 1.7 to mile 3.7. However, areas that escaped the fire include well-shaded forests mixed with meadows and diverse flora. The babbling creek can be heard for nearly all the trail. The trail crosses the creek approximately 27 times, and crosses a few drainages as well. The first three creek crossings are on bridges that will support both bikes and stock. Some of the other crossings have single log bridges for hikers. Crossing the creeks during spring runoff can be challenging.

The trail ends near the Stove Prairie Road but there is no trail access from that road.

The first 1.7 miles of trail is of moderate difficulty for horses, but past that it is very challenging and is not recommended for riding.

Please respect the private property at the end of the trail.

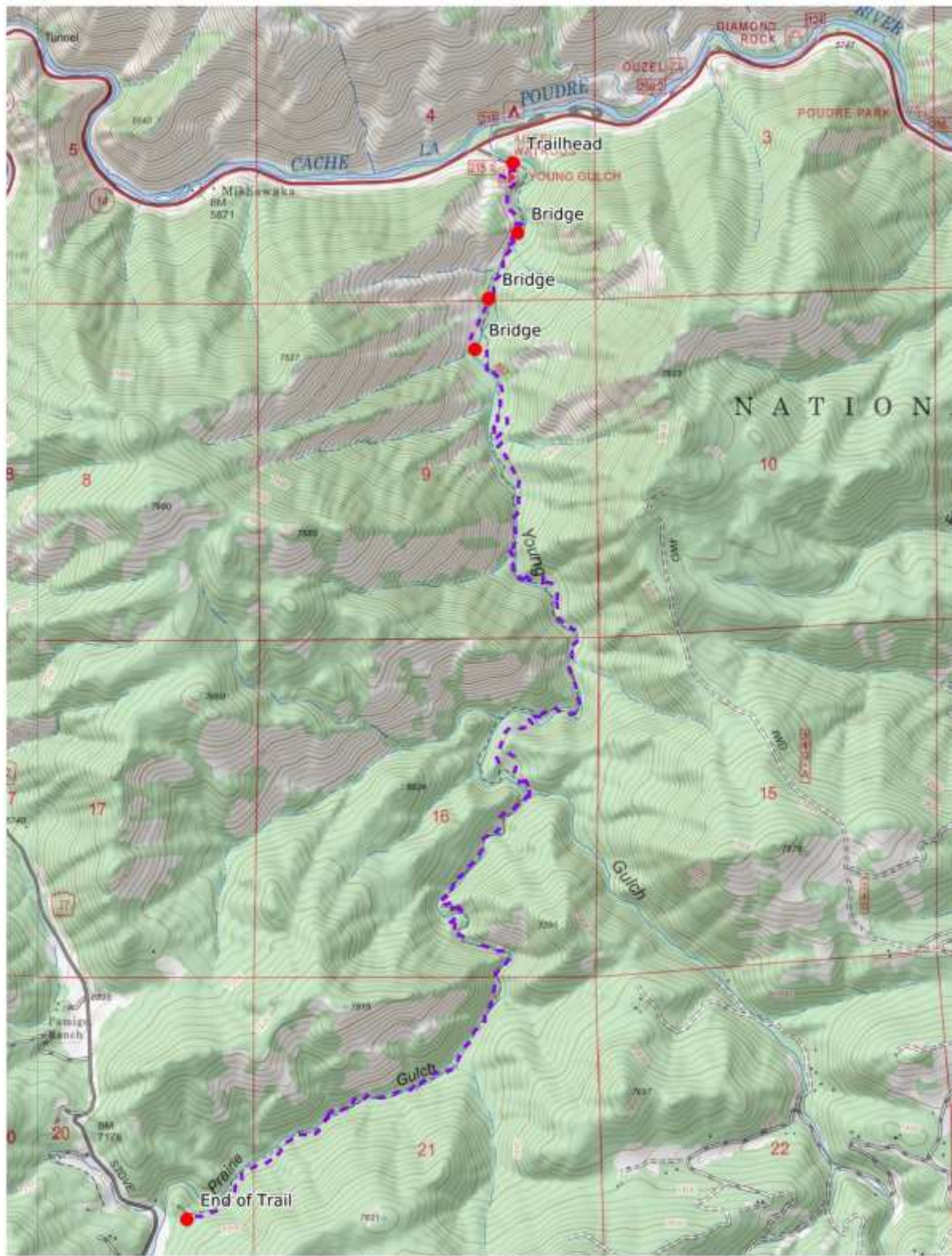
INFORMATION OF INTEREST: The city of Fort Collins acquired the right from the Forest Service to develop a property known as Young’s Gulch (now called Young Gulch) in 1918. The city spent \$300 in the spring of 1919 to build a road up the gulch, and was assisted by the Forest Service in planting trees in the area.

All mileages provided are approximate.

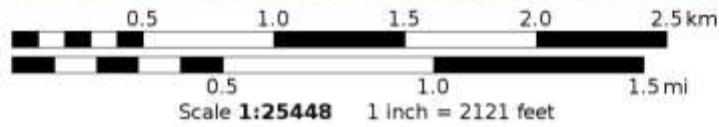
- Dogs - Must be under voice control at all times.
- Stock - To avoid spreading noxious weeds, recommend beginning 72 hours prior to the ride, stock should be fed only pellets or certified weed-free hay. Required: throughout the trip, stock *must* be fed only pellets or certified weed-free hay.
- Bicycles and Other Wheeled Conveyances - Allowed.
- Motorized Transport - Prohibited.
- Group Size - A single group of more than 74 people must have a USFS permit.

Mileage	GPS Coordinates: datum = WGS84	Lat/Long	UTM
0	Trailhead (on CO-14)	N40°41.33' W105°20.88'	470596mE 4504274mN
0.3	First bridge	N40°41.13' W105°20.87'	470608mE 4503904mN
0.6	Second bridge	N40°40.96' W105°20.95'	470494mE 4503590mN
0.8	Third bridge	N40°40.82' W105°21.02'	470394mE 4503331mN
1.7	Seventh creek crossing ; heavily burned area begins	N40°40.25' W105°20.88'	470588mE 4502276mN
3.7	Most heavily burned area ends	N40°39.30' W105°21.03'	470369mE 4500519mN
5.3	End of trail	N40°38.60' W105°21.98'	469026mE 4599229mN

(See next page for map of trail.)



Mercator Projection
 WGS84
 USNG 13TDE-13TDF
 CalTopo



Young Gulch: 3