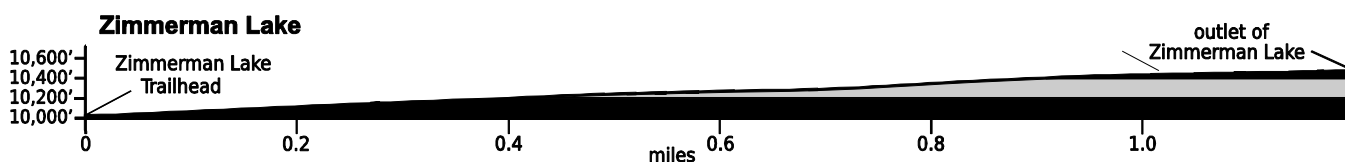


Apr. 26, 2022

**Public Trail Information: Zimmerman Lake**

Trail(s): Zimmerman Lake #977	
Ratings / restrictions:	Hikers – Easy Stock riders – Moderate See complete REGULATIONS below INFORMATION OF INTEREST
Cautions:	None
Typically accessible:	Year-round (see SEASONAL below)
Wilderness:	None
One-Way Length:	1.2 miles (trailhead to lake outlet)
Beginning / Peak Elevations:	10,026 / 10,479
Gain/Loss/Net Gain:	453/0/+453
Map(s) - Trails Illustrated:	#112 Poudre River, Cameron Pass; Mountain Jay, Rawah Wilderness
Map(s) - USGS 7-½' Quadrangles:	Clark Peak, Chambers Lake



**TRAILHEAD LOCATION:**

Upper Poudre River Area: Drive west on CO-14 for 57.4 miles from Ted’s Place to the large, paved parking lot on the south (left) side of CO-14 (at mm 66.3). The Zimmerman Lake Trail heads east from the south (upper) end of the parking lot. Toilets are available at the parking lot. The parking area is large and has 2 entrances, making it very accessible for stock trailers. No water at trailhead.

**WATER: Spotty** - Water is only available at and near the lake.

**CAMPING:** There are a few camping sites on the southwest and north shores of the lake which meet U.S. Forest Service regulations and Leave No Trace guidelines. See REGULATIONS below.

**SEASONAL:** The parking area is usually accessible, but be prepared for high elevation winter driving conditions. Snowshoes or skis are needed. There is a winter-only trail that circumnavigates the lake, marked with blue diamonds, which adds about 1.4 miles to the total round trip.

**DESCRIPTION:** The trail is a well-established, easy to follow roadbed. The unofficial angler trail around the lake is a single track that can be difficult to follow in some places and is often marshy in places.

This trail follows the route of an old road that was built to Zimmerman Lake in 1957 for logging purposes. It is in multi-use National Forest. The trail to Zimmerman Lake is popular year-round and has sustained some resource damage, especially from inexperienced snow campers building bonfires and stripping dead and live branches from standing trees. The blue diamond trail markers designate a winter-only trail which should not be used when snow is absent.

**INFORMATION OF INTEREST:** The Colorado Division of Wildlife successfully reintroduced native greenback cutthroat into Zimmerman Lake several years ago. A few years later it was determined that the introduced greenbacks weren’t genetically pure and the Colorado Department of Parks and Wildlife removed the original strain and introduced fish thought to be pure greenback cutthroat – the State Fish of Colorado.

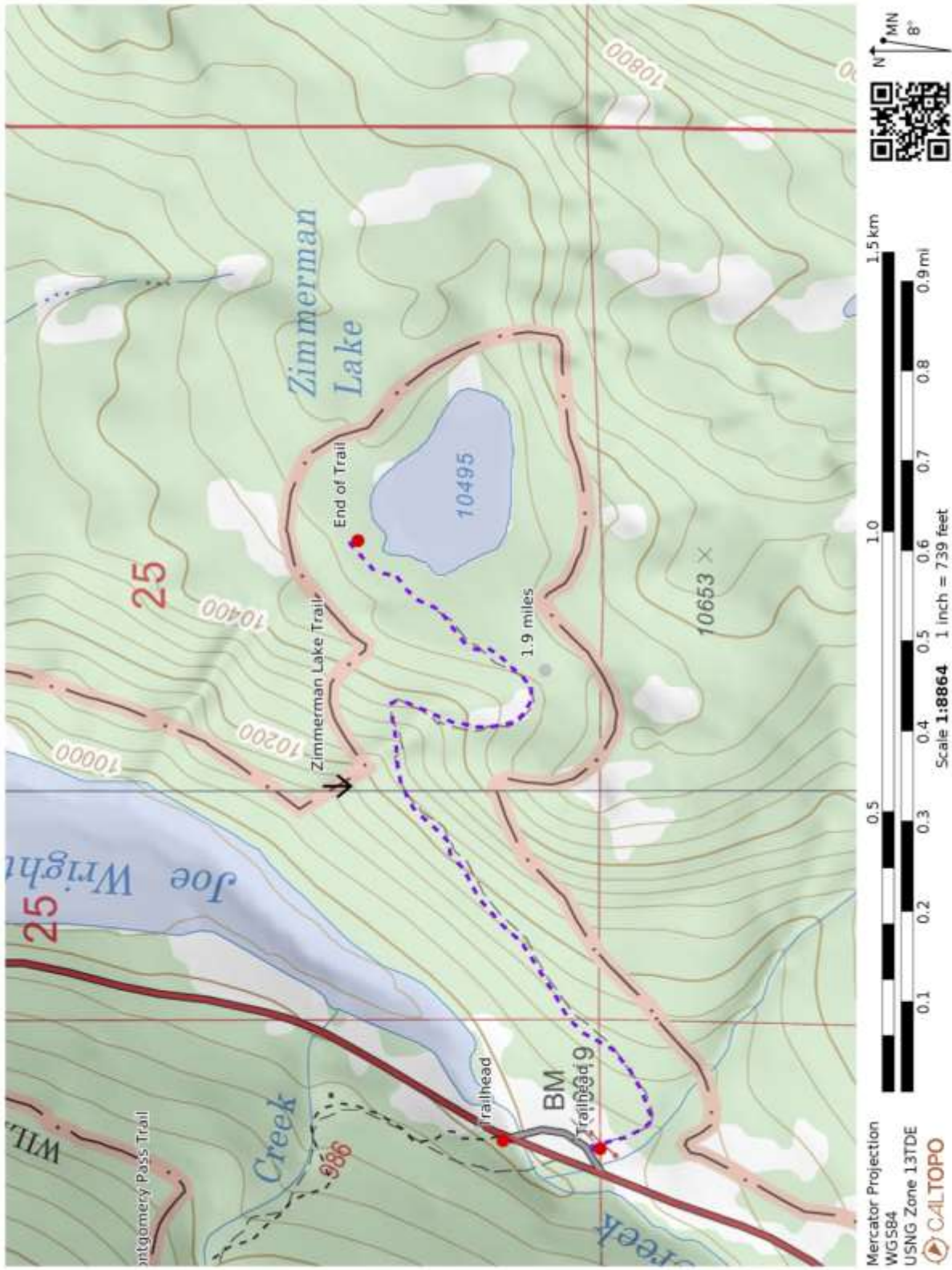
**REGULATIONS:**

- Camping and Fires – Prohibited within 200 feet of trailhead. Recommend at least 100 feet from water and trail.
- Dogs – Must be under voice control at all times.
- Stock – To avoid spreading noxious weeds, recommend beginning 72 hours prior to the ride stock feed should only be pellets or certified weed-free hay. Required: throughout the trip, any feed *must* be pellets or certified weed-free hay.

- Bicycles and Other Wheeled Conveyances – Prohibited.
- Motorized Transport – Prohibited.
- Group Size – More than 74 people in a single group must have a USFS permit.

<b>Mileage</b>	<b>GPS Coordinates: datum = WGS84</b>	<b>Lat/Long</b>	<b>UTM</b>	
0.0	trailhead (on CO-14)	N40°32.34' W105°52.95'	425 <sup>265</sup> mE	4487 <sup>957</sup> mN
1.1	junction with Meadow ski trail	N40°32.50' W105°52.22'	426 <sup>298</sup> mE	4488 <sup>243</sup> mN
1.2	outlet of Zimmerman Lake/end of trail	N40°32.50' W105°52.27'	426 <sup>227</sup> mE	4488 <sup>244</sup> mN

**(See next page for map of trail.)**



Zimmerman Lake: 3