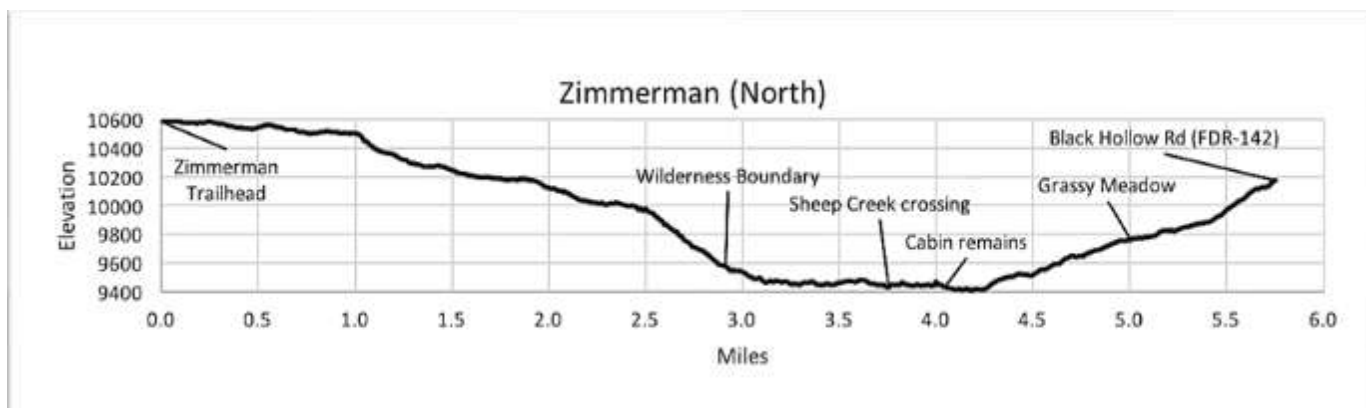


May 4, 2022

Public Trail Information: Zimmerman (North)

Trail(s): northern portion of Zimmerman #940	
Ratings / restrictions:	Hikers -Moderate Stock riders - Moderate Dogs must be on hand-held leash with hikers See complete REGULATIONS below INFORMATION OF INTEREST
CAUTIONS:	Burn area
Typically accessible:	After snow melt in late June
Wilderness:	Comanche Peak
One-Way Length:	5.7 miles (from the trailhead at the end of Crown Point Road to FDR-142)
Elevation - Beginning / Peak:	10,590 / 10,592
Gain/Loss/Net Gain:	766/1,181/-405
Map(s) - Trails Illustrated:	#112 Poudre River, Cameron Pass
Map(s) - USGS 7-½ ' Quadrangles:	Chambers Lake, Boston Peak, Kinikinik



TRAILHEAD LOCATION:

Pingree Park Area: Drive 26.5 miles west on CO-14 from Ted’s Place to the Pingree Park Road (at mm 96.1). Cross the Cache La Poudre River, and proceed 4.3 miles to Forest Road 139 (Crown Point Road). Turn right and drive 18.8 miles to the end of the Crown Point Road at the Comanche Peak Wilderness boundary.

No toilets or water for stock at the Zimmerman Trailhead. There is some parking for stock trailers, with a pull-through / turn-around.

CAUTIONS: This trail was in the Cameron Peak Fire of 2020, the largest fire in Colorado history, which burned nearly 209,000 acres. The condition of this trail is unknown.

Cautions in Burn Areas:

- Falling Trees
 - Tree root systems can be burned—compromised or non-existent. Thus, trees in burned areas fall at a high rate for some time after a fire.
 - There may be a large number of trees on the trail.
- Stump Holes—Tree stumps sometimes burn below ground level and can leave dangerous holes, often filled in loosely by ash or needles.

- Difficult to Follow Trails
 - At times the trail can be difficult or impossible to follow with no vegetation or tread visible.
 - Even in formerly familiar terrain, the landscape can be disorienting.
 - Rock Slides are more likely, due to lack of vegetation and root damage.
 - Flash Flooding is likely even with small rainstorms and may occur way downstream from rain.

WATER: Water is abundant only in the vicinity of the junction of East Sheep and West Sheep creeks.

CAMPING: There are numerous possible campsites that follow Leave No Trace guidelines and U.S. Forest Service regulations in the area surrounding the large meadow near the junction of East Sheep Creek and West Sheep Creek, on both the west and north sides of the meadow. See REGULATIONS below.

SEASONAL: Crown Point Road is not plowed during winter, so the trailhead is inaccessible then. The road usually opens in late June.

DESCRIPTION: From the trailhead at the end of Crown Point Road, stay to the north (right) and follow the Zimmerman Trail (N) as it descends gradually through a predominantly lodgepole pine forest. These

trail segments are easy to follow as the tread is mostly bare soil, gravel, and exposed rock bordered with a carpet of grouse whortleberry, which makes it readily visible. There is a series of interconnected grassy meadows stretching the NE (at N40°39.7' W105°44.09'). This meadow surrounds the confluence of West and East Sheep creeks. The route of the trail through the first meadow can be difficult to see, and a GPS may be needed to stay on the trail in this area. There are several beaver ponds in the area. Look for native cutthroat trout, which have been introduced into the Sheep Creek drainage. The trail crosses Sheep Creek at the north end of the meadow. This crossing is broad with enough water-flow, especially during the spring run-off, that water shoes or sandals are useful to keep your feet and boots dry. About 0.1 mile further on, the trail proceeds along the top of an old earthen dam for several hundred yards, passing by the remains of three old log cabins and then the disintegrating remains of a massive log crib wall filled with large rocks on the north side of the old earthen dam.

Passing the east end of the log and rock crib, the trail turns sharply to the north northwest and parallels Sheep Creek for a short distance before it turns to the east northeast and climbs up a hillside. The trail is wider (up to 8 ft wide in places) and rockier in this section than in flatter sections elsewhere. This segment of the trail journeys through predominantly lodgepole pine, with spruce and occasional clusters of quaking aspen. The trail continues climbing until it reaches the first of a series of medium-sized meadows where the trail disappears into tall grass. From the west end of the lower meadow (N40°39.76' W105°44.09'), the trail follows the NW edge of the meadow and then turns to the east at the top (SE) of the meadow and re-enters the forest. There are wet and muddy areas between the north end of the large

meadow surrounding the confluence of the East Fork and West Fork of Sheep Creek and the end of the trail

At the northern trailhead, the road has pull-offs on both sides, making it possible to park up to seven vehicles at this point. There is a single small (approx. 5" x 24") wooden sign "Zimmerman Trail" on the west side of the road.

INFORMATION OF INTEREST: The John Zimmerman family built the dam around the turn of the 20th century, with the intent of creating a reservoir. However, stories suggest that near the time of its completion, the western end of the dam was destroyed by a dynamite explosion. Despite the fact that numerous pieces of machinery, including several "slips" (large metal buckets approx. 32" x 29" x 10" deep that were presumably used to haul dirt and small rocks during dam construction), a plow, and other items that were left at the site (some of which are still there), the dam was never repaired or completed. There was even an intact forge and bellows inside the blacksmith shop at the site in the early 1950s (Stanley R. Case. 1995. *The Poudre - A Photo History*, pp. 285-287).

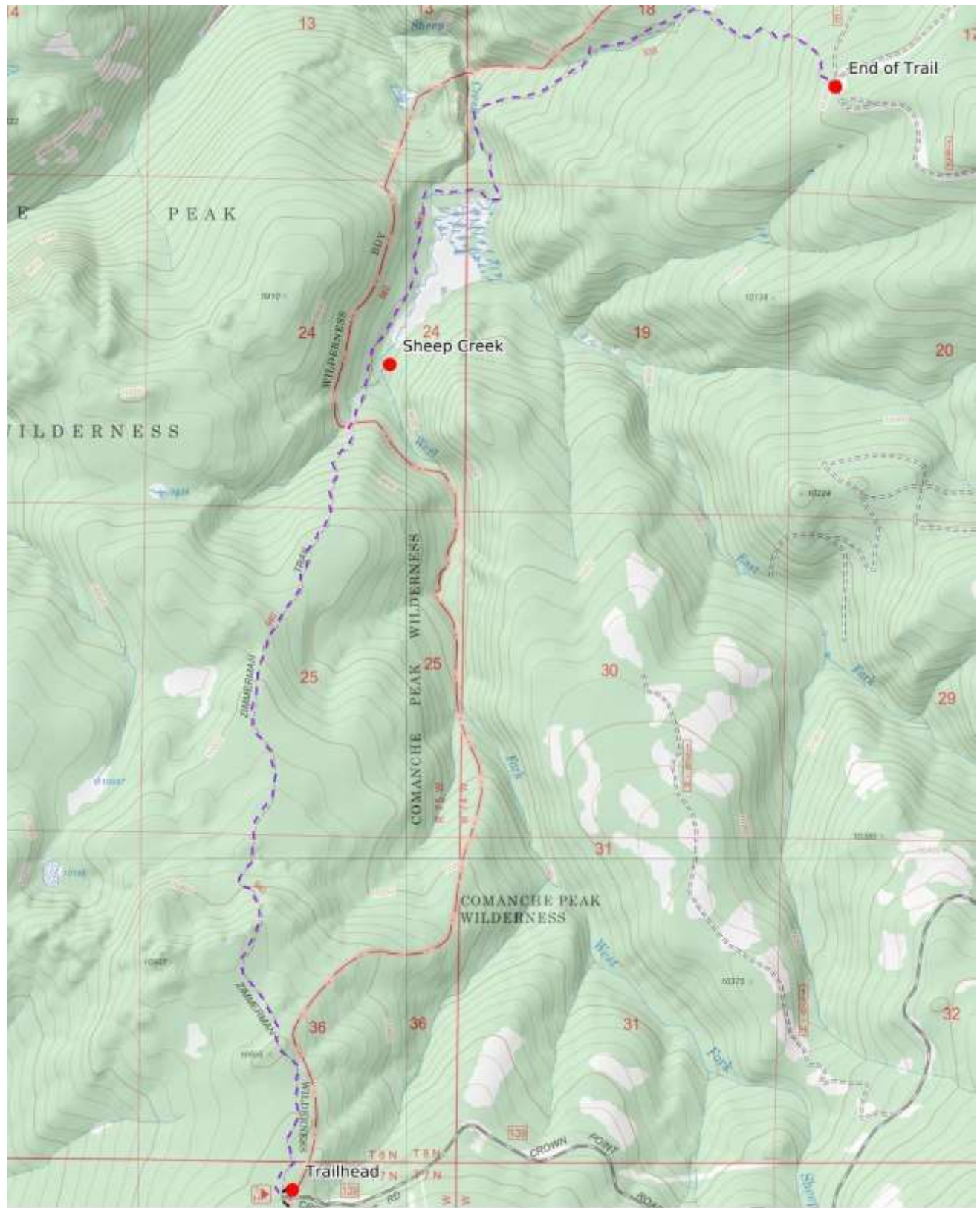
Over 10 years ago, in an effort to recover native cutthroat trout subspecies, Colorado Parks & Wildlife (CPW) "reclaimed" the Sheep Creek basin by eliminating all existing fish and introducing what were thought at the time to be genetically pure greenback cutthroat. At the same time CPW enacted restrictive catch-and-release fishing regulations to protect the introduced fish. The cutthroat established a stable population, but were subsequently discovered to be the Colorado River subspecies not the intended greenback subspecies (from the South Platte drainage). As a result, there may be another reclamation and introduction project in the basin sometime in the future.

REGULATIONS:

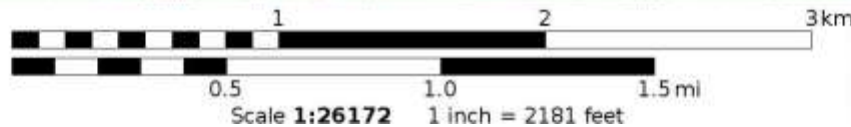
- Camping and Fires - Prohibited within 200 feet of trailhead. In the Wilderness: prohibited within 200 feet of water or trail. Outside the Wilderness boundary: recommend at least 100 feet from water and trail.
- Dogs - Must be on hand-held leash with hikers; voice control with stock.
- Stock - To avoid spreading noxious weeds, recommend beginning 72 hours prior to the ride, stock should be fed only pellets or certified weed-free hay. Required: throughout the trip, stock *must* be fed only pellets or certified weed-free hay.
- Bicycles and Other Wheeled Conveyances - Prohibited.
- Motorized Transport - Prohibited.
- Motorized Equipment - Prohibited in Wilderness.
- Group Size - In the Wilderness: maximum 12 people and stock, combined. Outside the Wilderness boundary: a single group of more than 74 people must have a USFS permit.

Mileage	GPS Coordinates: datum = WGS84	Lat/Long	UTM
0	Zimmerman Trailhead (at end of Crown Point Road)	N40°36.59' W105°45.43'	435946m 4495721mN
0	Wilderness regs sign on birdhouse placard near	N40°36.55' W105°45.41'	435974mE 4495647mN
2.9	Wilderness boundary south of meadow surrounding confluence of the East Fork and West Fork of Sheep	N40°38.68' W105°45.18'	436332mE 4499585mN
3.7	Trail crossing of Sheep Creek below meadow	N40°39.31' W105°44.90'	436736mE 4500747mN
3.9	Remains of 3 old cabins	N40°39.32' W105°44.72'	436990mE 4500763mN
4.7	Wooden trail sign	N40°39.71' W105°44.32'	437560mE 4501480mN
5.7	End of trail at Black Hollow Road (FDR-142)	N40°39.60' W105°43.46'	438770mE 4501267mN

(See next page for map of trail.)



Mercator Projection
 WGS84
 UTM Zone 13T
 CALTOPO



Zimmerman (North): 4